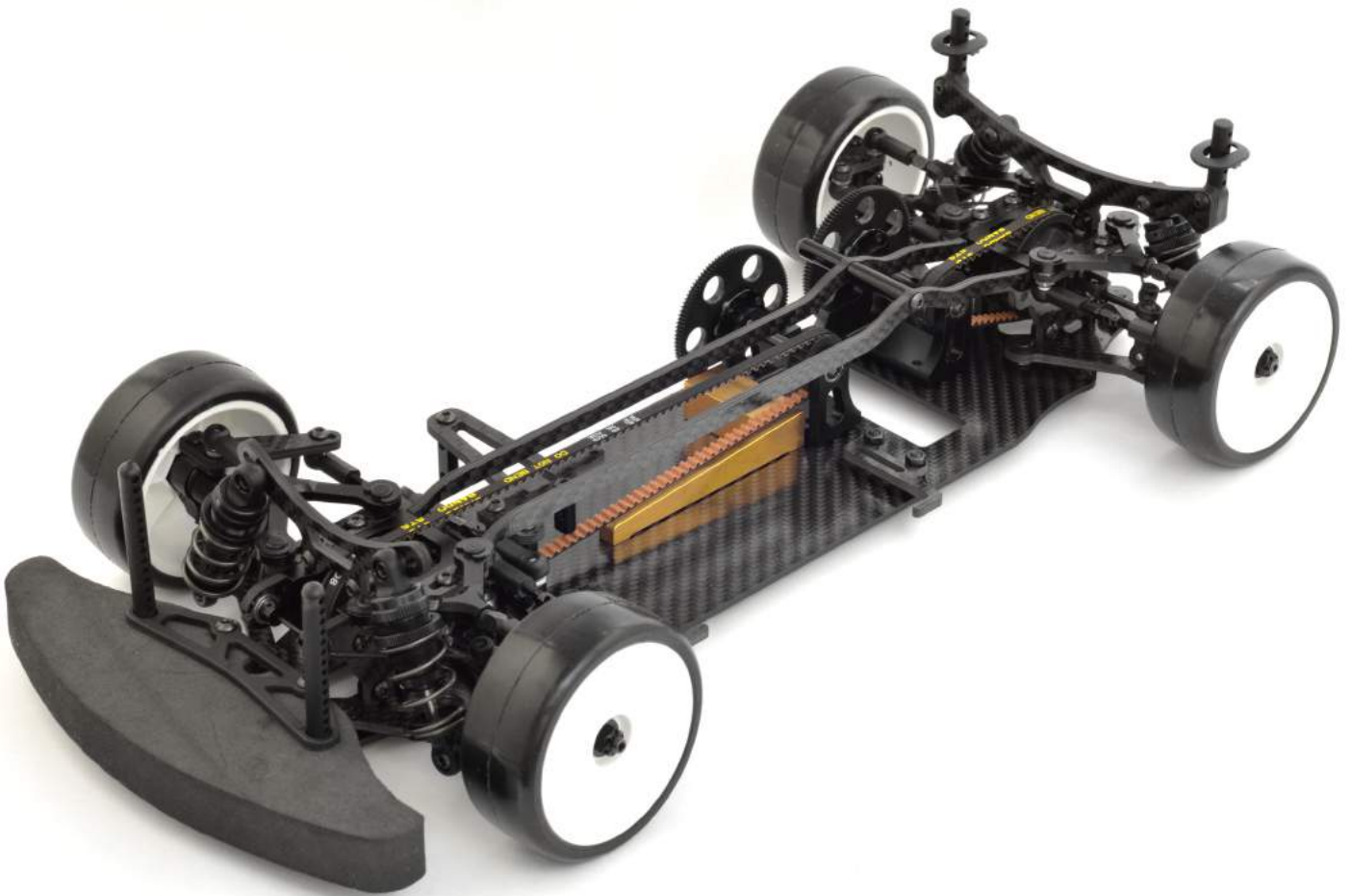




GZ1

1/10 TOURING CAR



INSTRUCTION MANUAL



INTRODUCTION

Congratulations on purchasing your Gizmo GZ1 touring car! The GZ1 car was designed in Denmark and produced by Gizmo Racing registered in Denmark. The Gizmo GZ1 car utilizes many unique features and newly developed innovations.

Before you start

The Gizmo GZ1 is a high end, high quality, and innovative 1 /10th scale touring car. The car should be built only by persons who have experience with building R/C model racing cars. This is not a toy and is not intended for use by children without supervision of a responsible, knowledgeable adult. The instruction manual must be read carefully and understood to the fullest before beginning assembly. If you have any problems or questions, do not hesitate to contact Gizmo Racing Team at support@gizmoracing.com. The Gz1 kit is a radio controlled model racing product and could cause harm and personal injury. The GZ1 car is designed for use on R/C race tracks and should not be used in general public areas. Gizmo Racing ApS accept no responsibility for any injuries caused by making or using this kit.

Due to policy of continuous product development, the exact specifications of the kit may vary.

Gizmo Racing ApS reserve all the right to change any specifications without prior notifications. All rights reserved.

ASSEMBLY NOTES

Before starting assembly of each build stage, check that you have the right quantity and size of items for the build stage. To assist you with the assembly of your Gizmo GZ1, we have included full size images of all the hardware parts in the manual.

The Gizmo GZ1 Manual and setup sheet is available on Gizmo's webpage: www.gizmoracing.com/support

General precautions

- Many of the items in this kit are small enough to accidentally swallow and therefore potential choking hazards, making them potentially fatal. Please ensure that when assembling the kit, you do so out of reach of small/young children.
- Take care when assembling the kit, as some of the parts have sharp edges.
- Please read this manual carefully to understand which ancillary items are used with this kit. Gizmo Racing ApS accept no responsibility for the operation of such ancillary items.
- Exercise care when using tools and sharp instruments.
- Follow the instructions for the radio equipment at all times.
- Never touch rotating parts of the car as this may cause injury.
- Keep wheels of the model off the ground when checking operation of the radio equipment.
- To prevent any serious personal injury and/or damage to property, please be responsible when operating all remote controlled models.
- The Gizmo GZ1 model car is not intended for use on roads or areas where its operation can conflict with or disrupt pedestrians of vehicle traffic.
- Do not run the car in poor light or if it goes out of sight. Any impairment to your vision may result in damage to your car or injury others of their property.
- As a radio controlled device, such as your car, is subject to radio interference from things beyond your control. Any such interference may cause in loss of control of your car. Please consider this possibility at all times.
- When not using your RC model, always disconnect and remove battery.
- Insulate any exposed electrical wiring to prevent short circuits. Take maximum care in wiring, connecting and insulating cables. Make sure cables are always connected securely. Check connections for if they become loose and if so, reconnect them securely. Never use RC models with damaged wires. A damaged wire is extremely dangerous and can cause short circuits resulting in fire.

EQUIPMENT RECOMMENDED (NOT INCLUDED)	TOOLS RECOMMENDED (NOT INCLUDED)
<ul style="list-style-type: none">• Radio Transmitter• Radio Receiver• Electronic Speed Control• Steering Servo• Electric Motor• Pinion Gear (64 or 48 pitch)• 7,4 V Li-Po Battery• 190mm Body Shell• Touring Car Wheels, Tires, Inserts	<ul style="list-style-type: none">• 1.5mm, 2mm Hex Driver• 2mm Ball End Hex Driver• 5,5mm, 7mm, 9mm, 10mm, 12mm Wrench• 2.5mm Flat Head Screwdriver• Callipers• Hobby Knife• Camber Gauge• Ride Height Gauge• Thin CA Glue• Tread Lock• Joint Grease



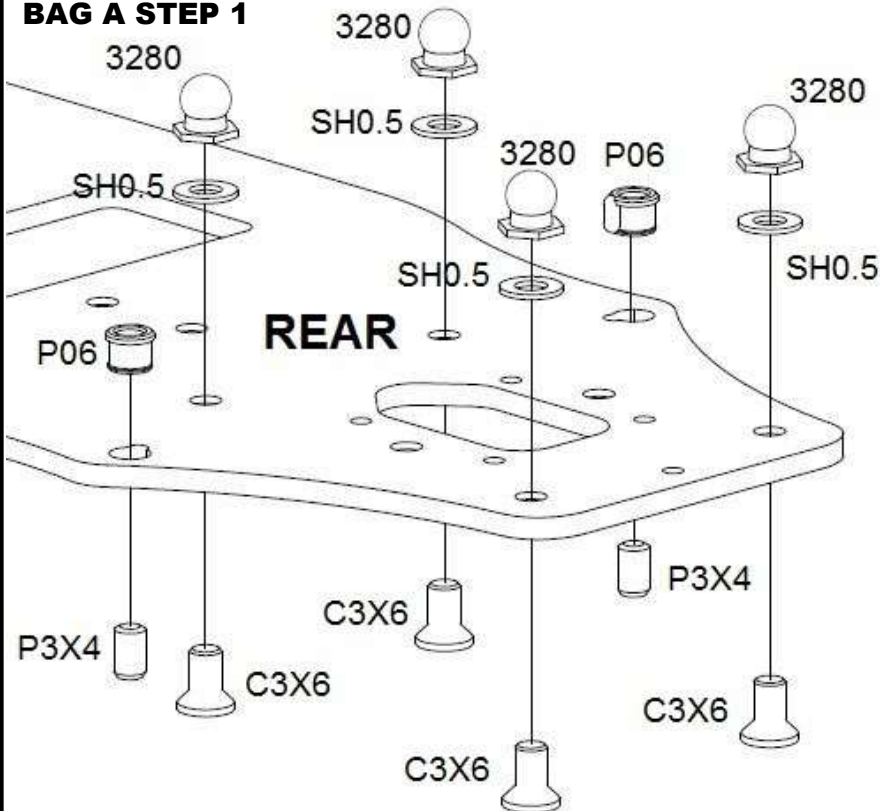
BAG A INCLUDES

1 X 1010	Chassis
4 x P06-1	Downstop Collar
1 X 7000	Weight
4 X 3060	Side plate mount
2 X 1050	Sideplate
4 x 1100	Lower Wishbones
4 X 3030	Roll bar mount
4 X 3040	Shock mount
8 x 5040	Wishbone insert
8 x 5050	C-clips for wishbone
8 X 3280	Balls for ball joints

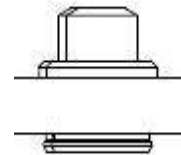
SCREWS & SHIMS NEEDED

4 X C3X5	Hex screw SFH
9 X C3X6	Hex screw SFH
20 X B2.5X6	Hex screw SH
8 X B3X6	Hex screw SFH
4 X P3X4	Set Screw
8 X P3X6	Set Screw
8 X SH0.5	Shim 0,5mm

BAG A STEP 1



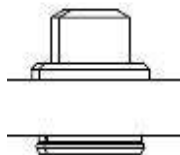
NOTE: You need to glue in P06 and cut of the extra material of P06 that are under the bottom of the chassis.



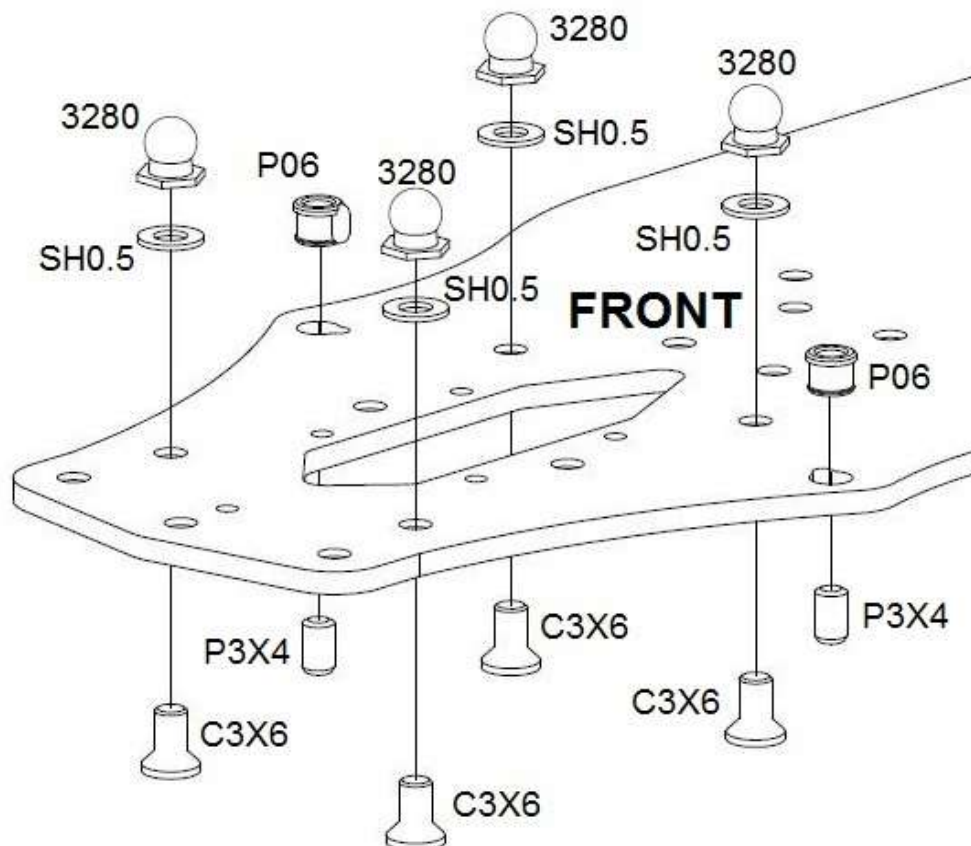
Cut this part of P06

BAG A STEP 2

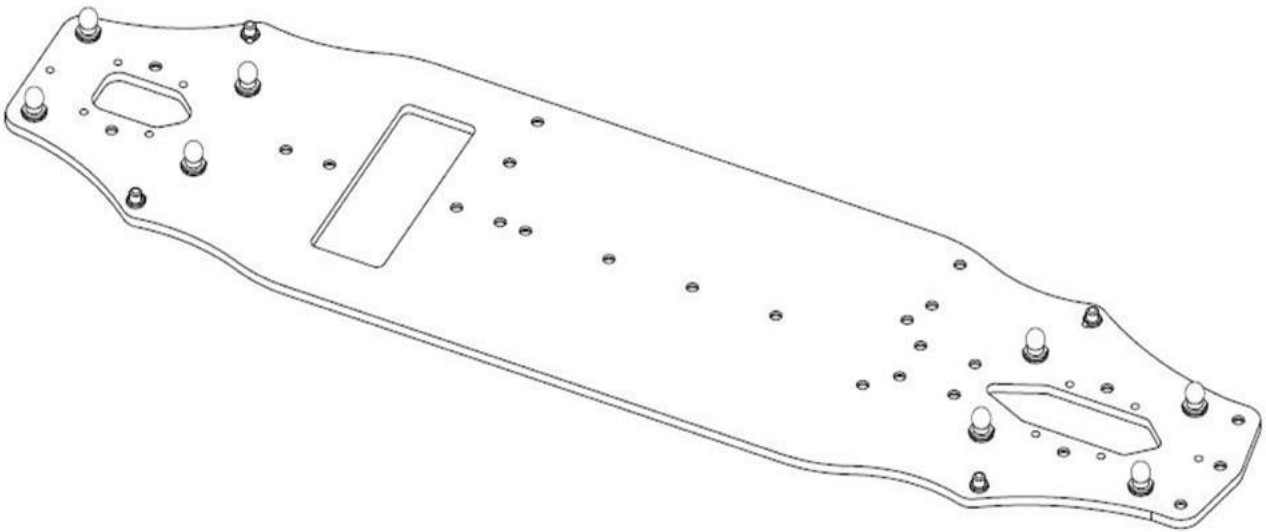
NOTE: You need to glue in P06 and cut of the extra material of P06 that are under the bottom of the chassis.



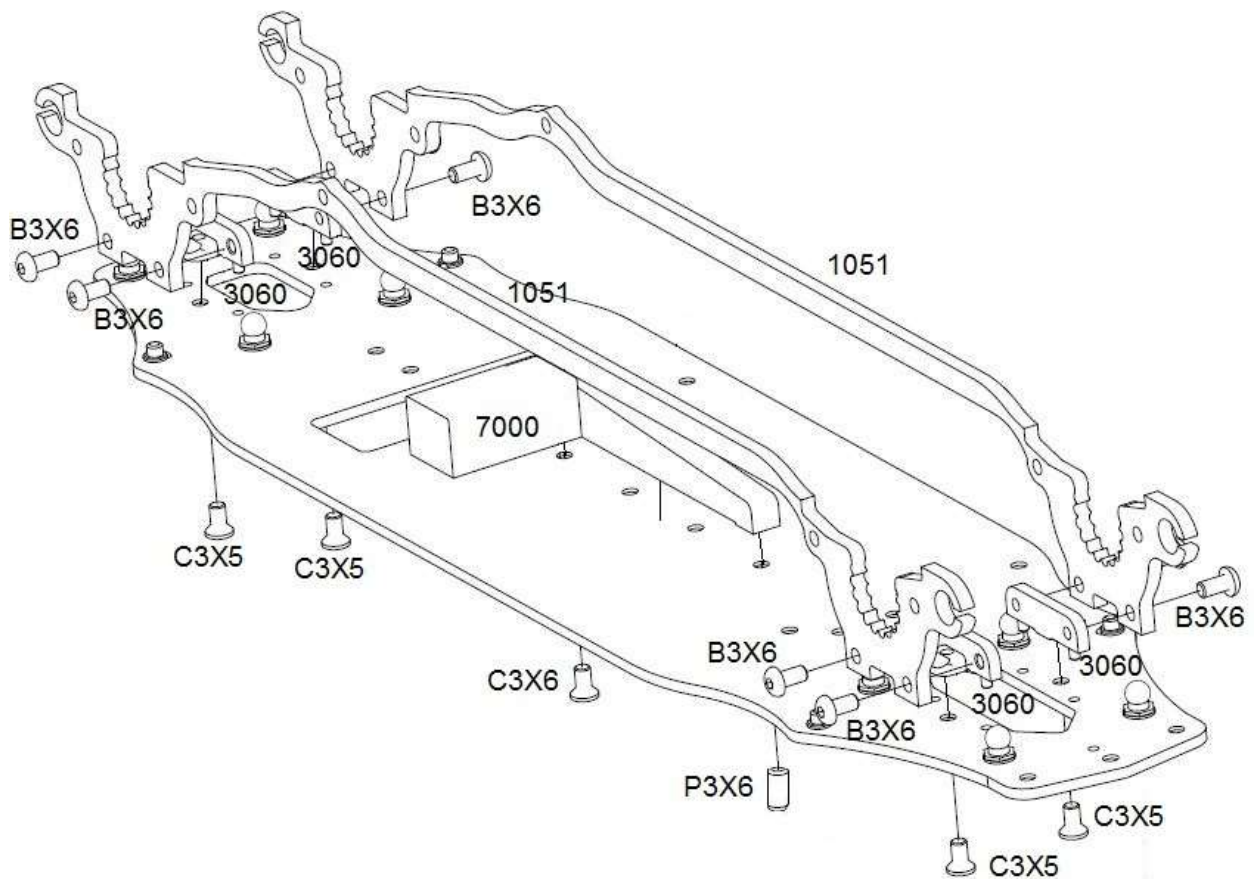
Cut this part of P06



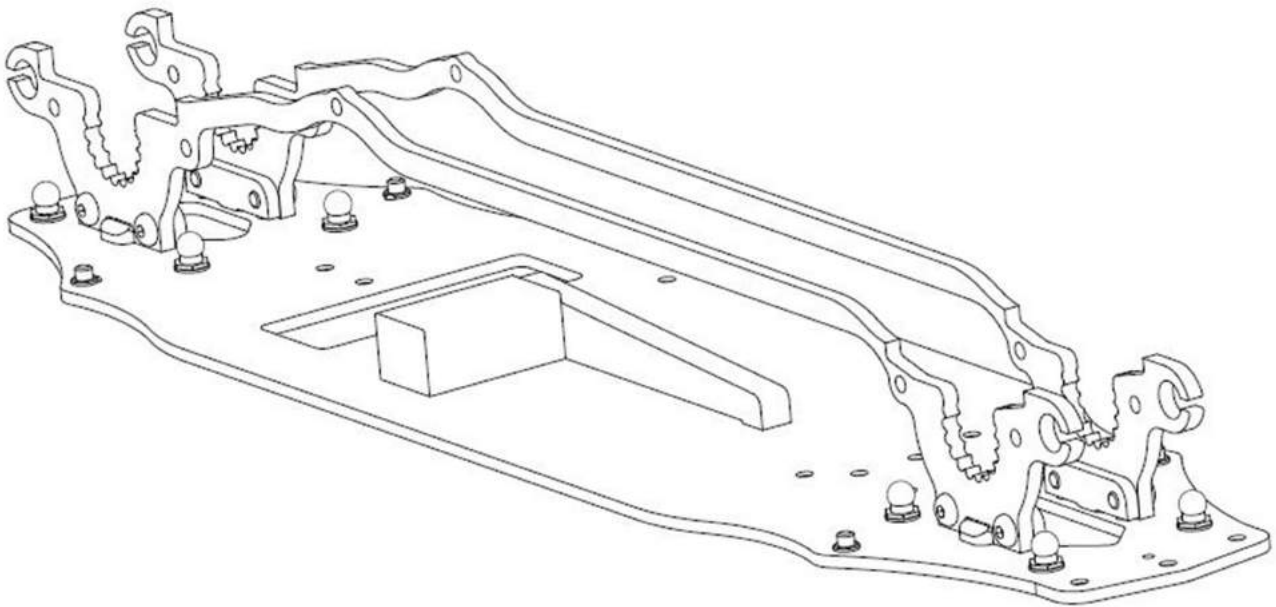
PRE-FINISHED PICTURE



BAG A STEP 3

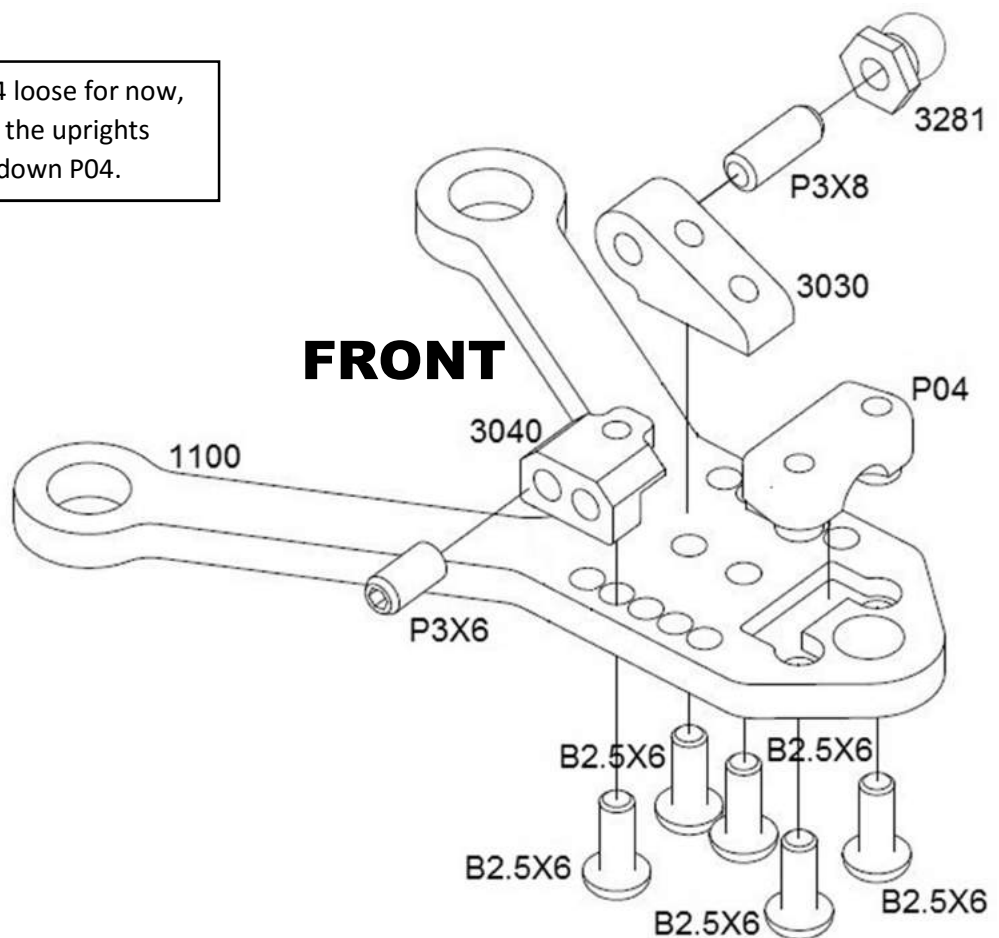


PRE-FINISHED PICTURE

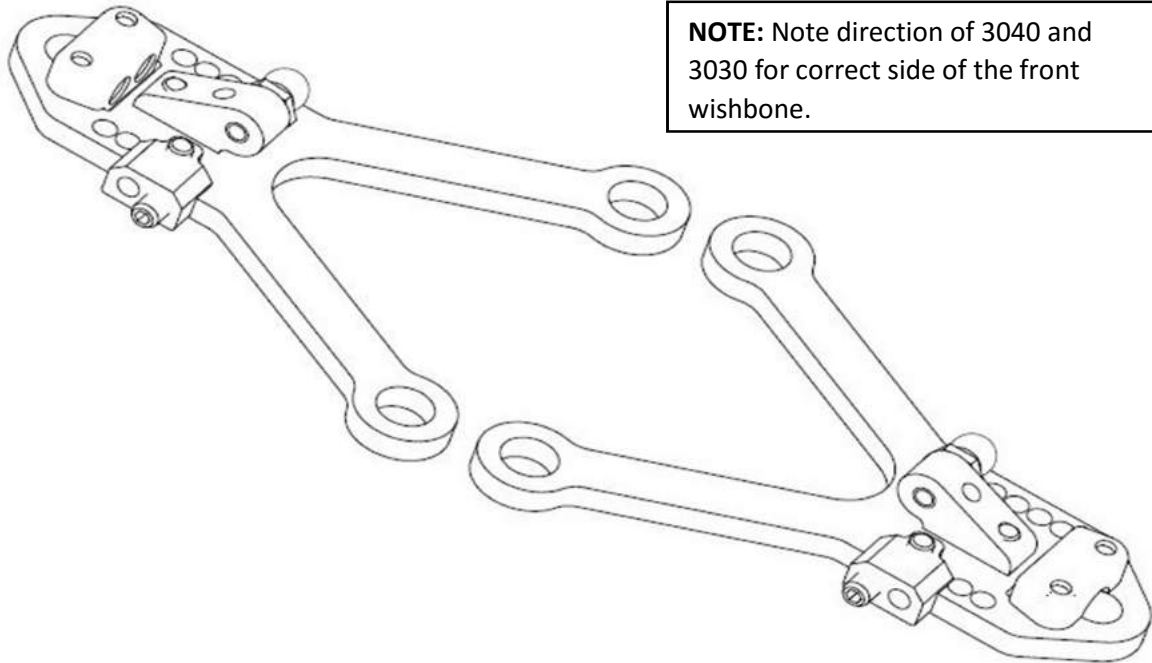


BAG A STEP 4

NOTE: Leave P04 loose for now, when you install the uprights you can tighten down P04.

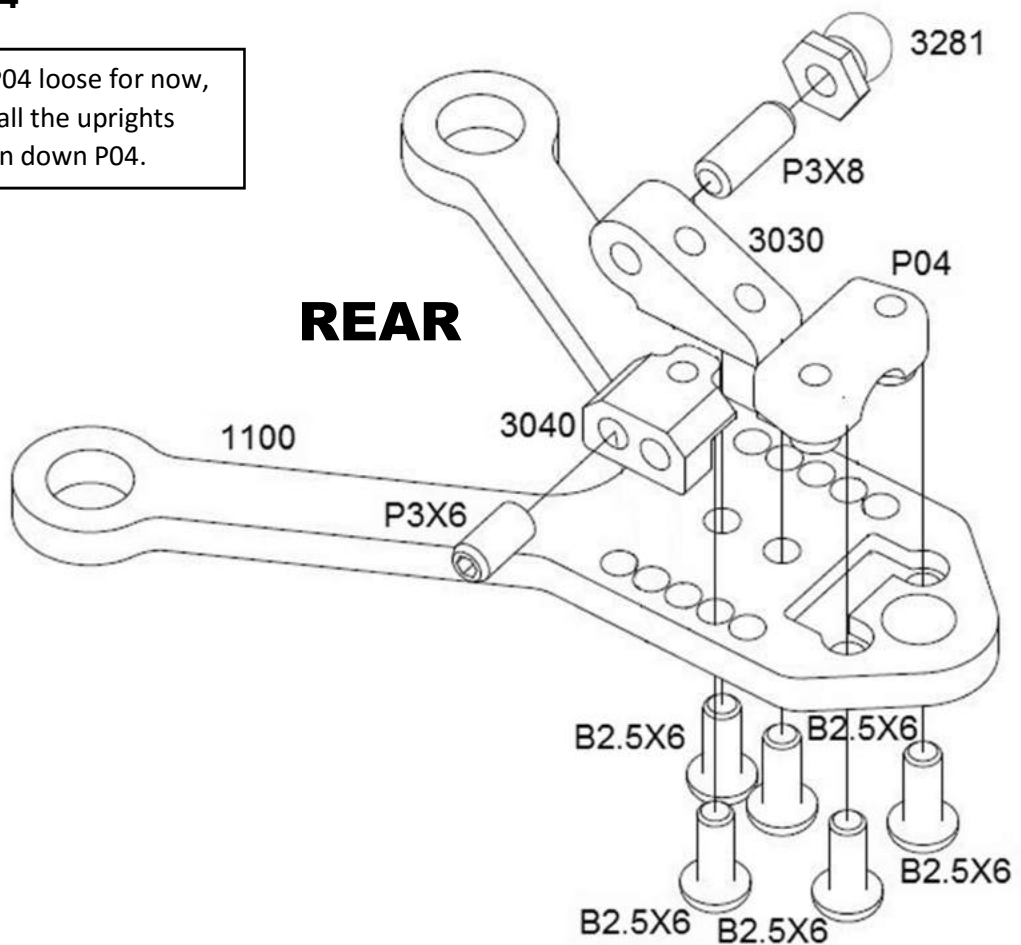


PRE-FINISHED PICTURE

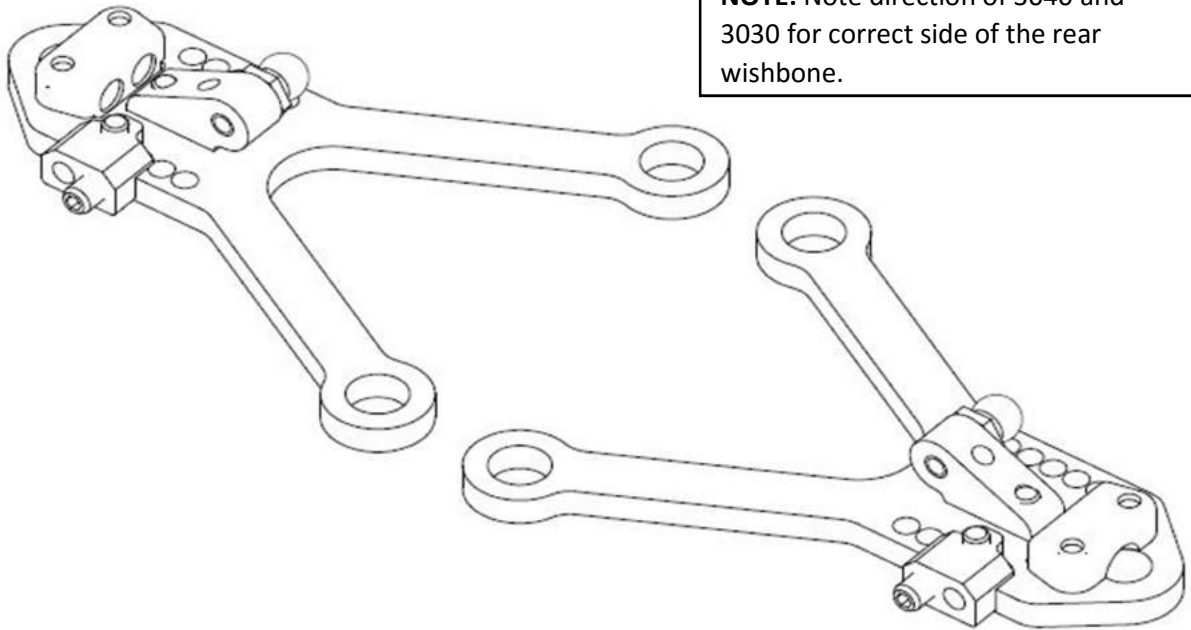


BAG A STEP 4

NOTE: Leave P04 loose for now, when you install the uprights you can tighten down P04.

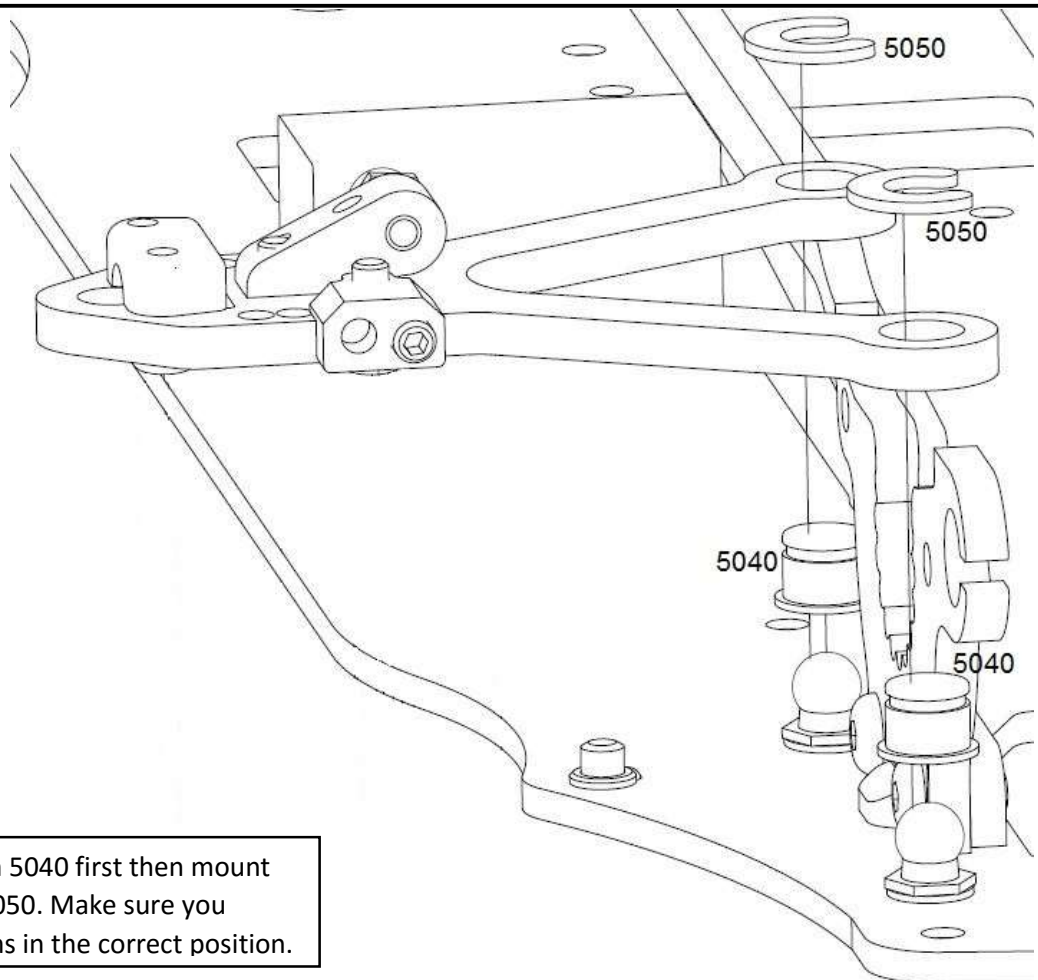


PRE-FINISHED PICTURE



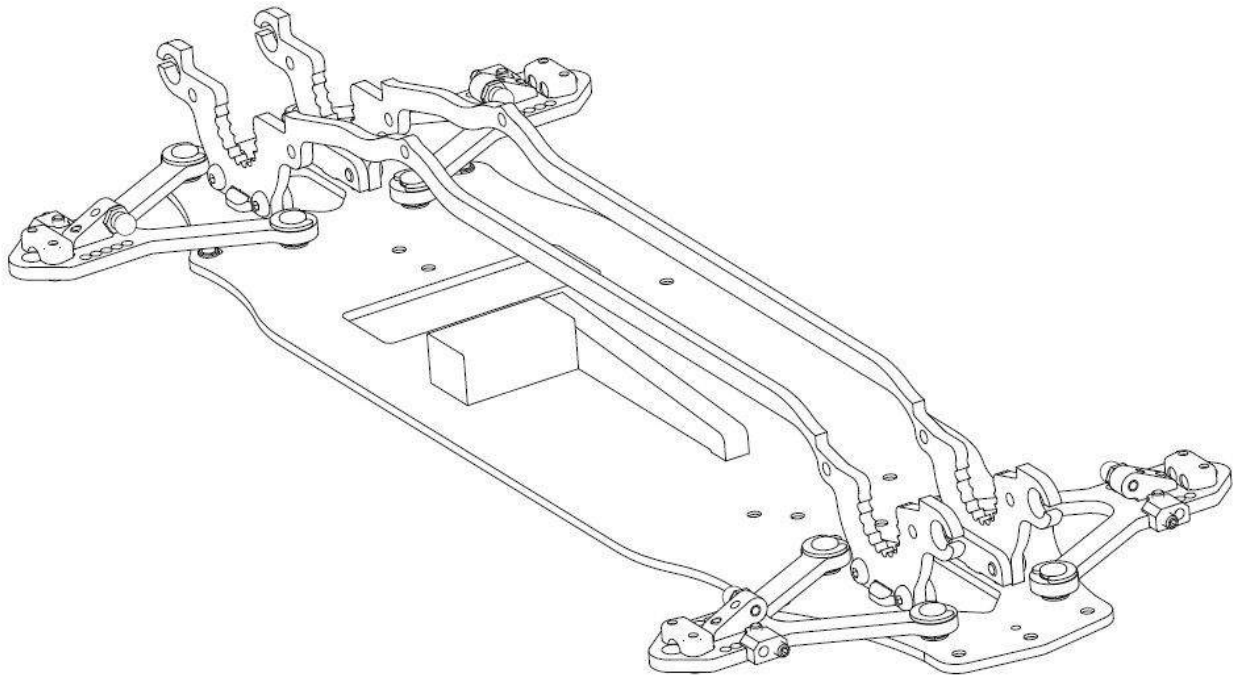
NOTE: Note direction of 3040 and 3030 for correct side of the rear wishbone.

BAG A STEP 5



NOTE: Snap on 5040 first then mount the arm and 5050. Make sure you mount the arms in the correct position.

BAG A FINISHED





BAG B INCLUDES

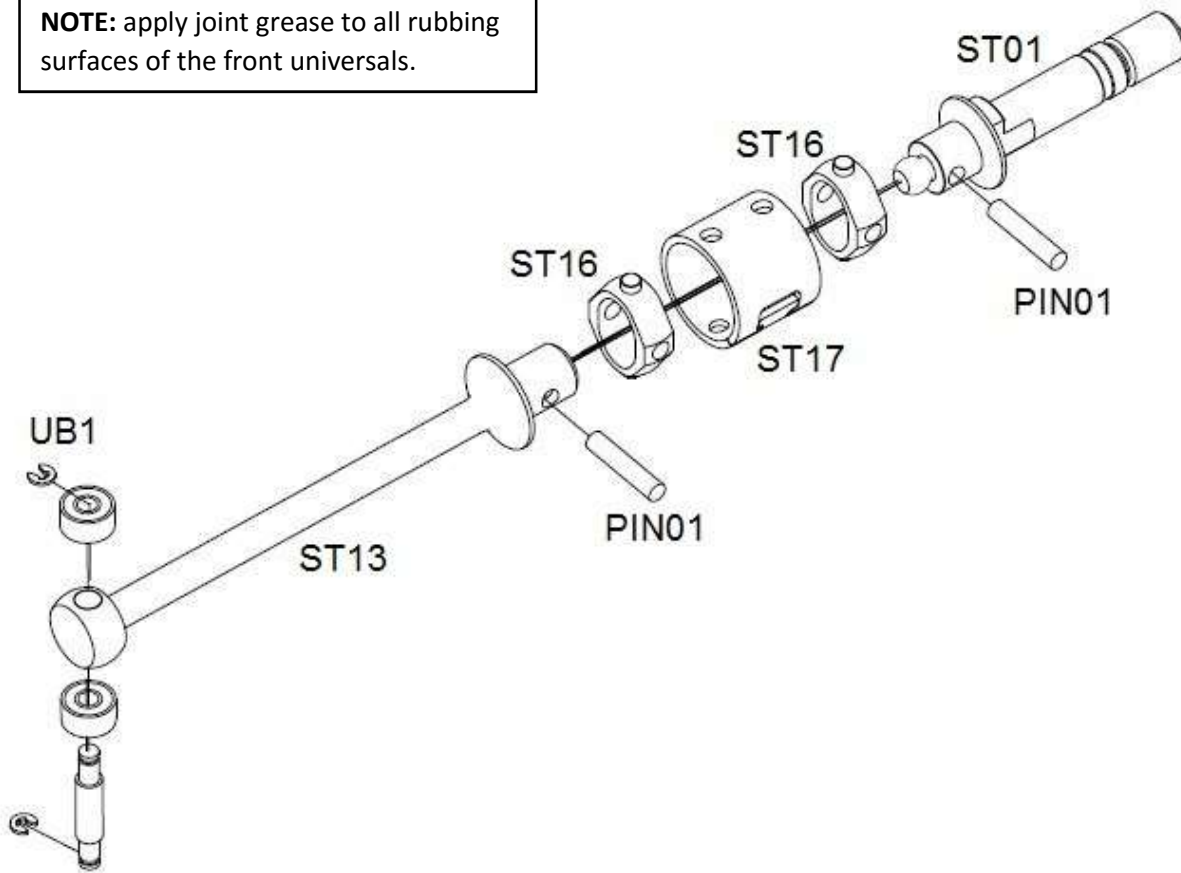
2 X ST01	Front axles
6 x PIN01	Pin 1,5x7,8mm
2 X ST13	Front universal bones
6 X ST16	U joint cross
1 X UB1	Universal bearing set (full car kit)
2 x ST17	Universal ring
2 X ST02	Rear axle
2 X ST14	Rear universal bones

SCREWS & SHIMS NEEDED

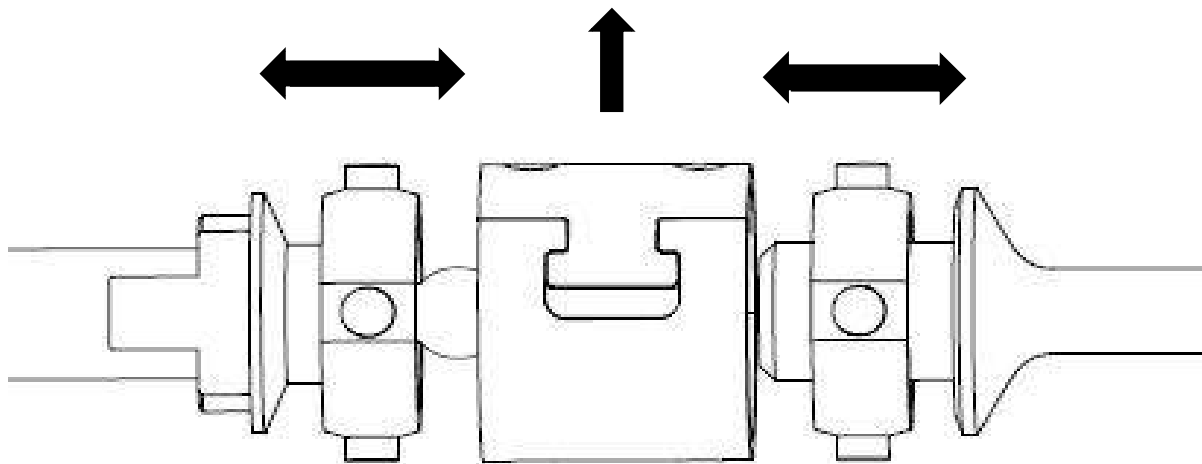
NONE!

BAG B STEP 1

NOTE: apply joint grease to all rubbing surfaces of the front universals.

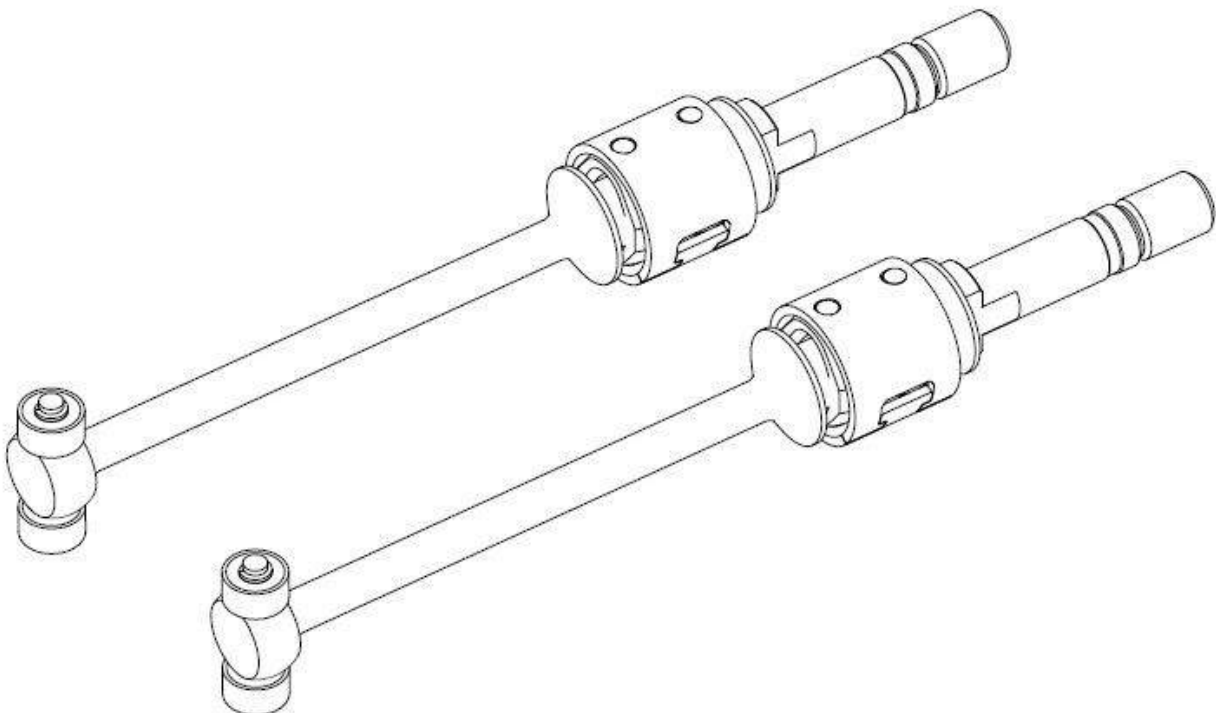


ASSAM / DISASSAMBLING



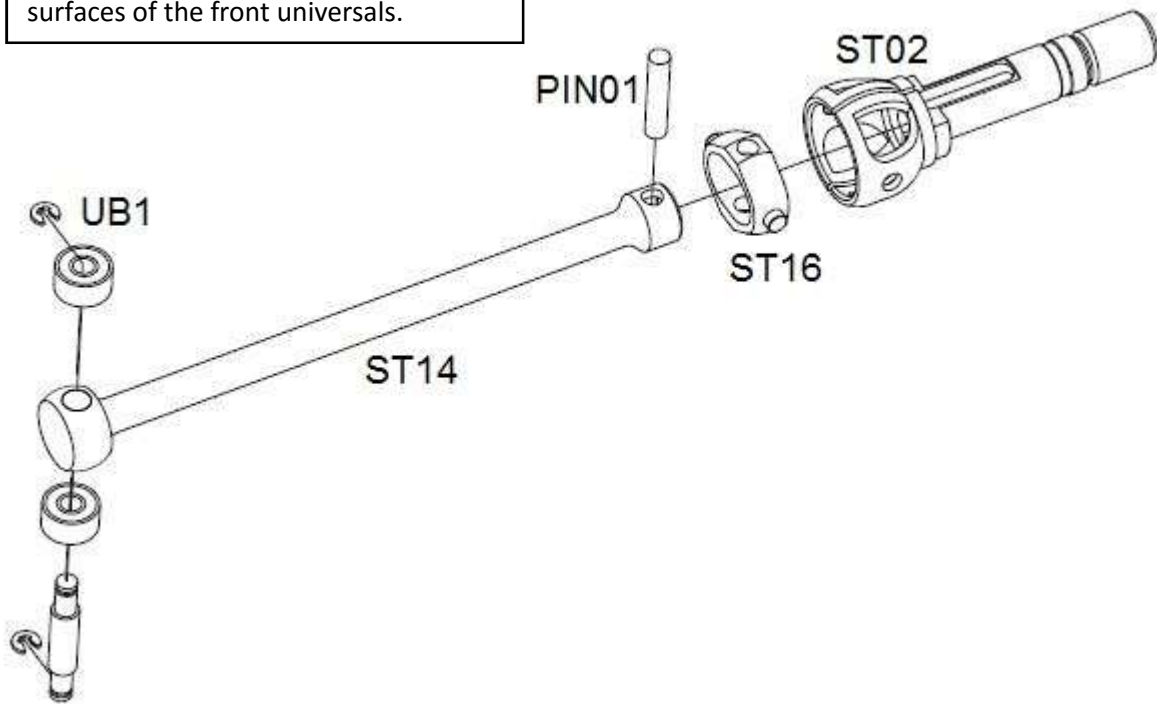
NOTE: Insert a 2.5mm flat screwdriver into the slot on ST17 get out / insert ST16 into the unclamped ST17.

FRONT AXLE FINISHED

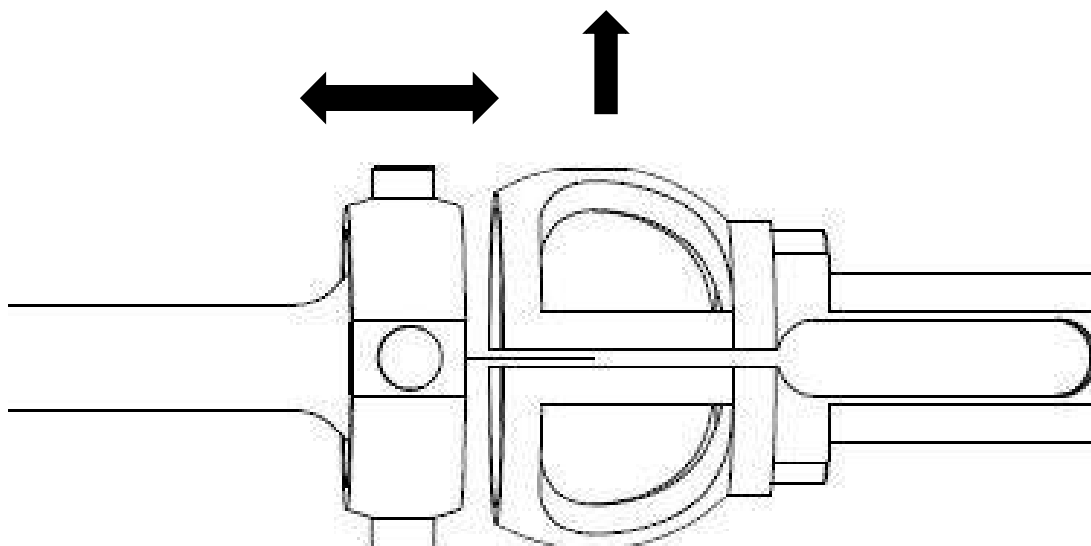


BAG B STEP 2

NOTE: apply joint grease to all rubbing surfaces of the front universals.

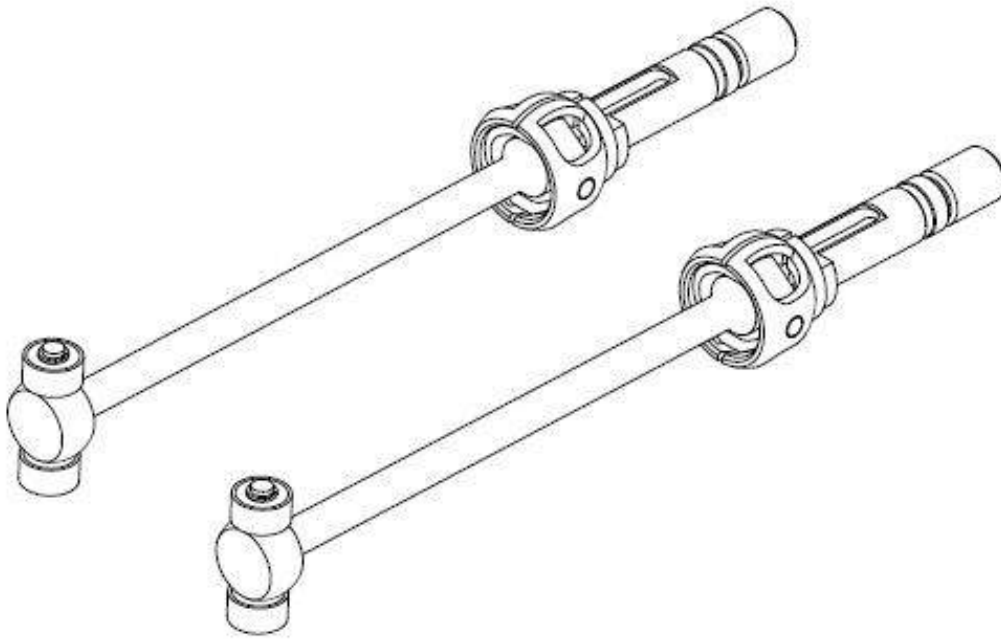


ASSAM / DISASSAMBLING



NOTE: Insert a 2.5mm flat screwdriver into the slot on ST02 get out / insert ST16 into the unclamped ST02.

REAR AXLE FINISHED





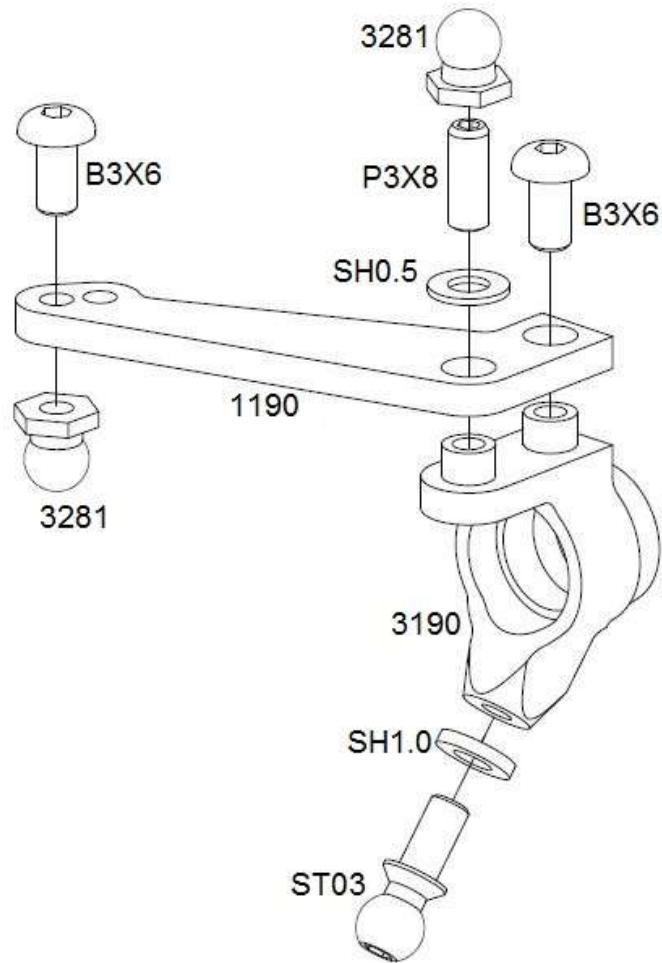
BAG C INCLUDES

8 X 6020	Bearings 6x10x3
4 x 3191	Uprights
4 X 3180	Wheel axle
2 X 1190	Arm for upright front
2 X 1200	Rear toe in arm
4 x ST03	Upright ball
4 X P16	Lock ring
8 X 3281	Ball for ball joints

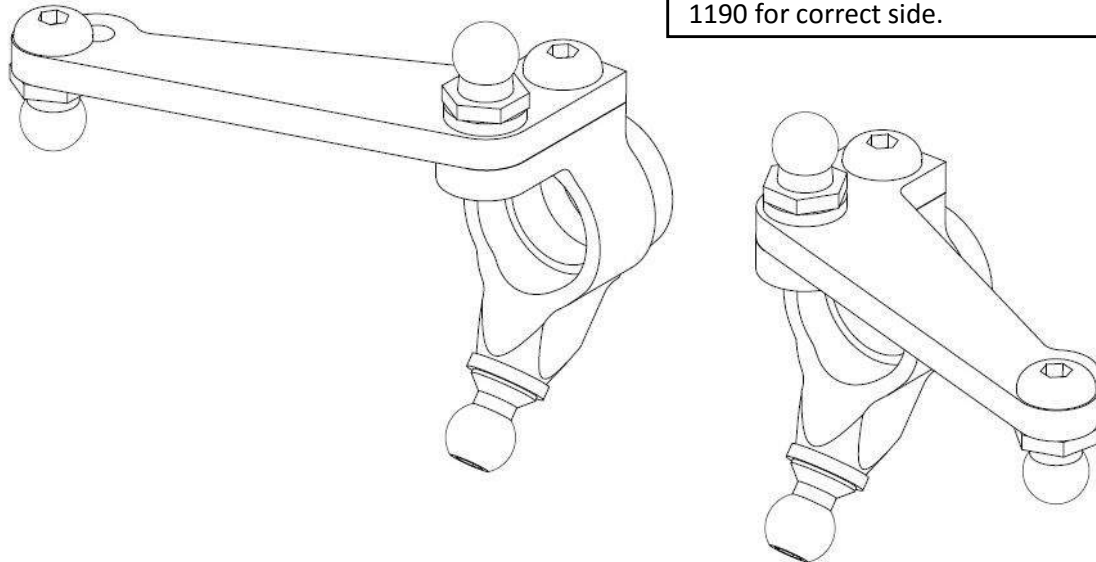
SCREWS & SHIMS NEEDED

8 X B3X6	Hex screw SFH
8 X P3X8	Set Screw
4 X SH0.5	Shim 0,5mm
4 x SH1,0	Shim 1,0mm

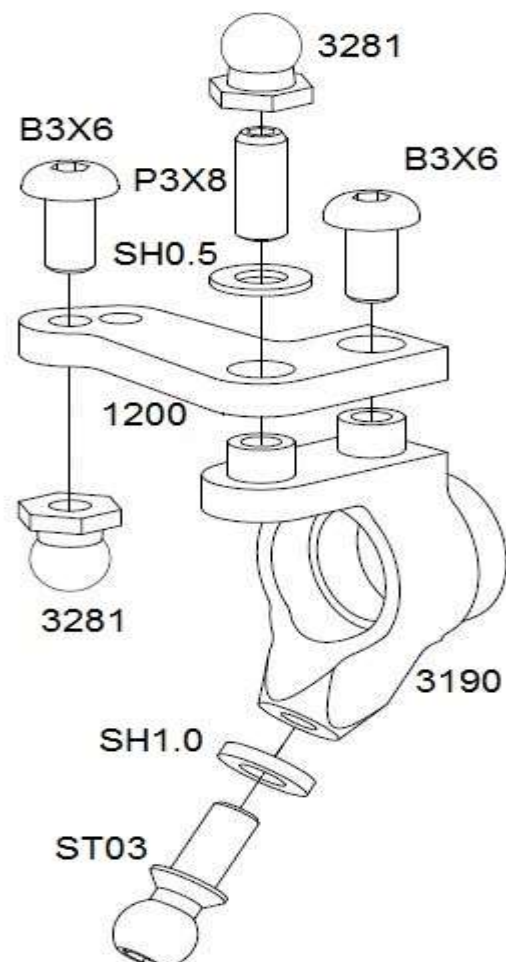
BAG C STEP 1



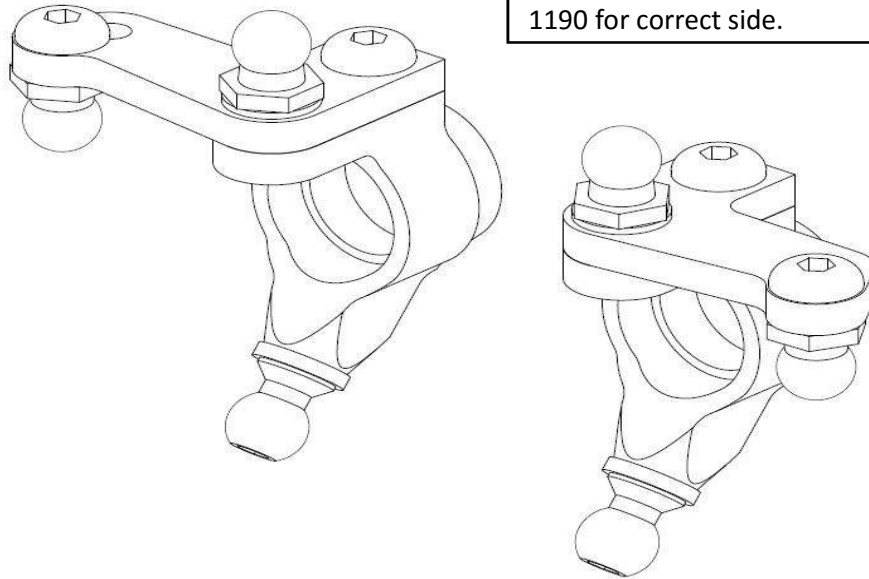
PRE-FINISHED PICTURE



BAG C STEP 2

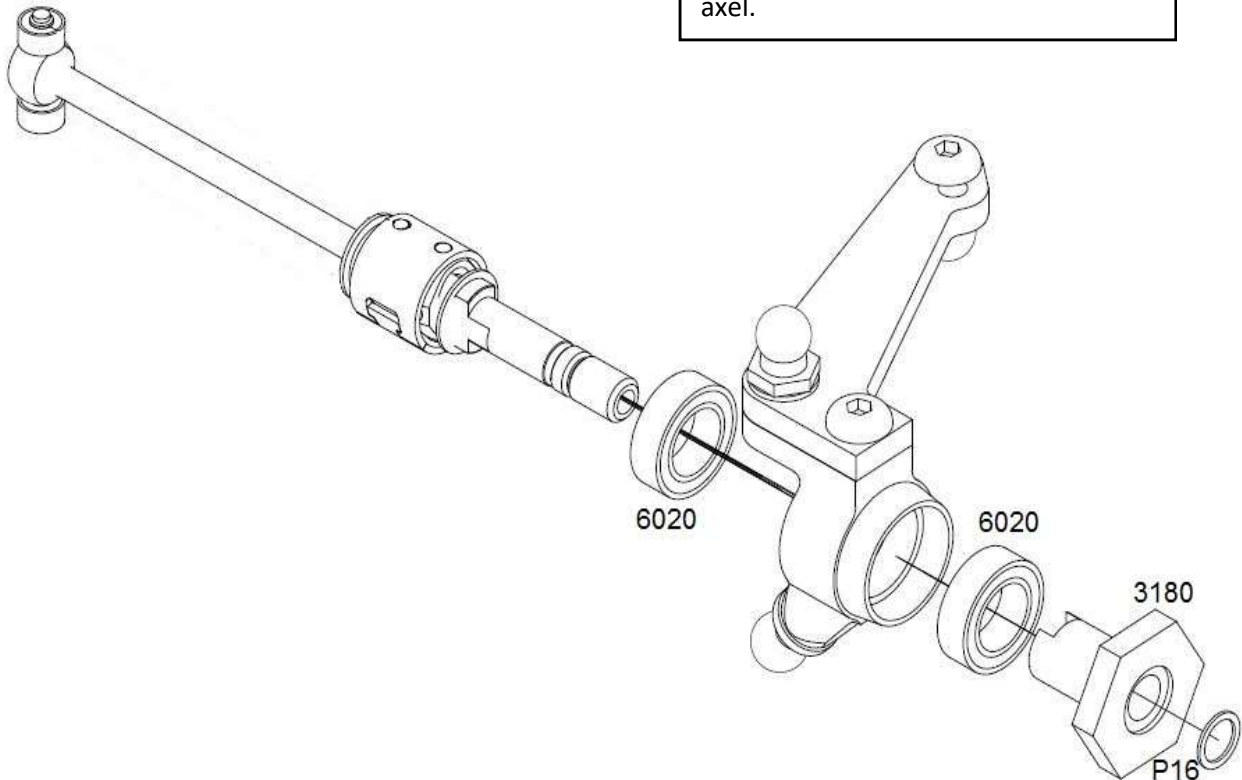


PRE-FINISHED PICTURE



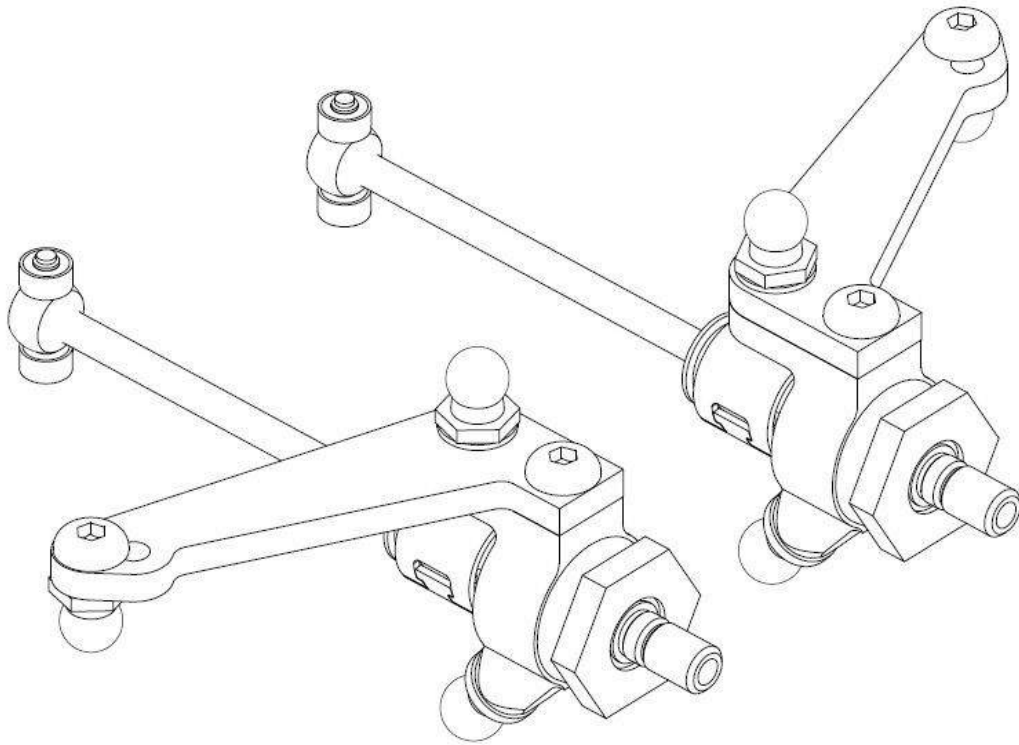
NOTE: Make both front right and front left uprights. Note direction of 1190 for correct side.

BAG C STEP 3



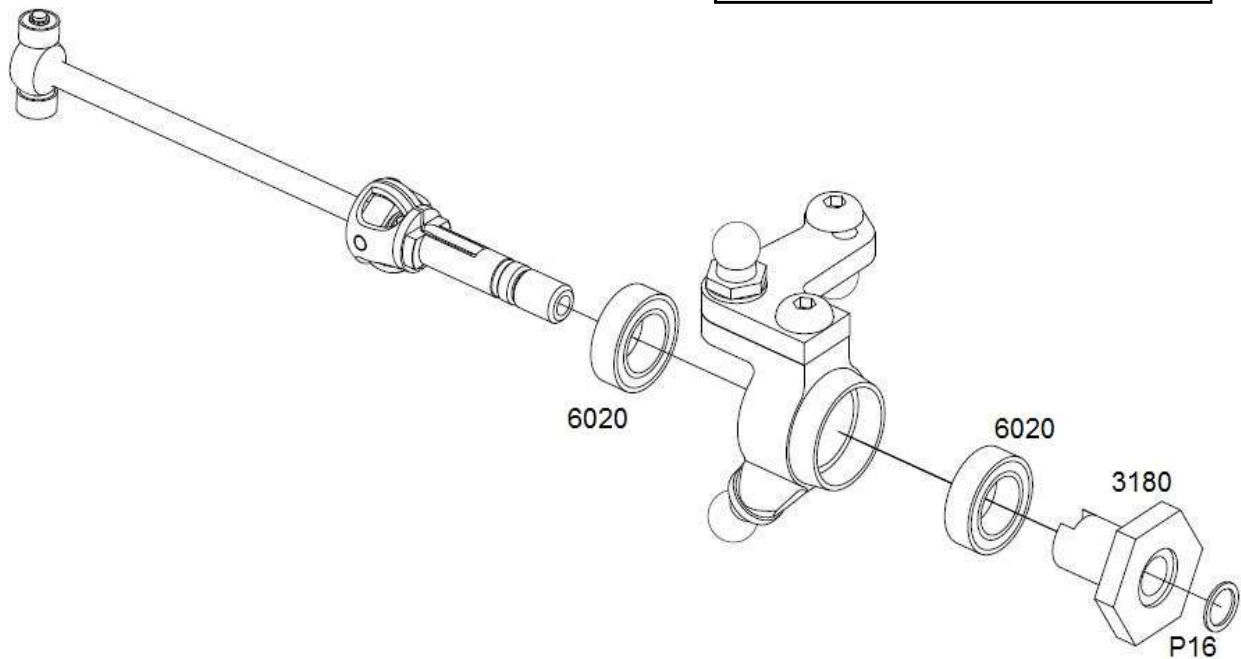
NOTE: When pressing P16 on for the first time I may need some pressure. To disassemble hit the end face of the axel.

FINISHED FRONT UPRIGHTS

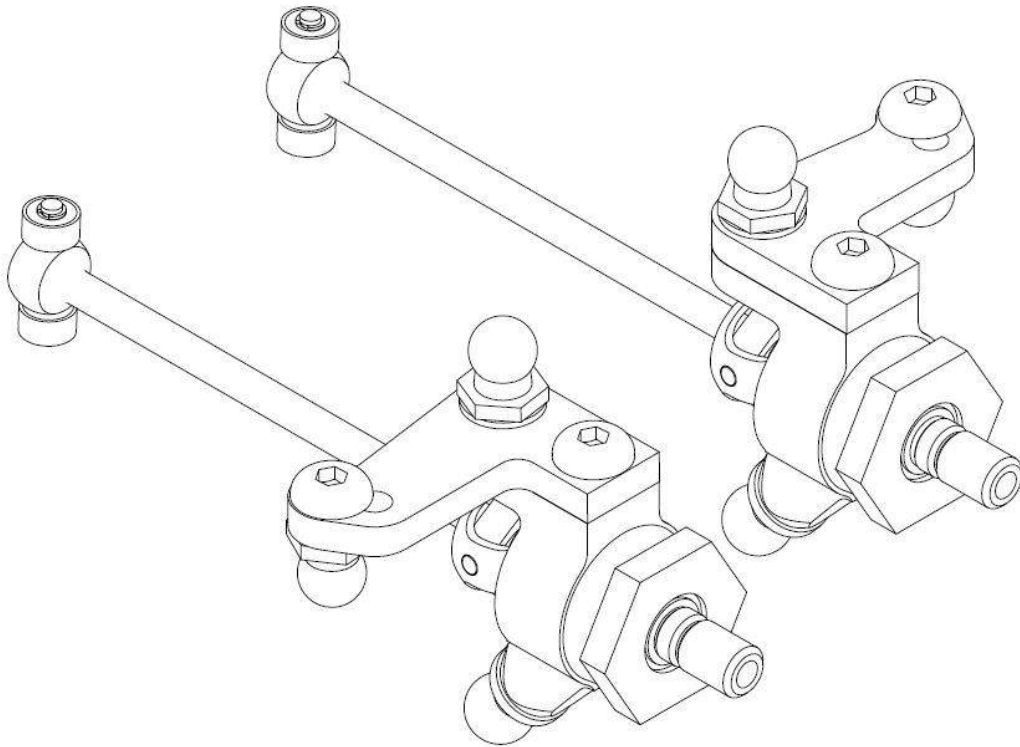


BAG C STEP 4

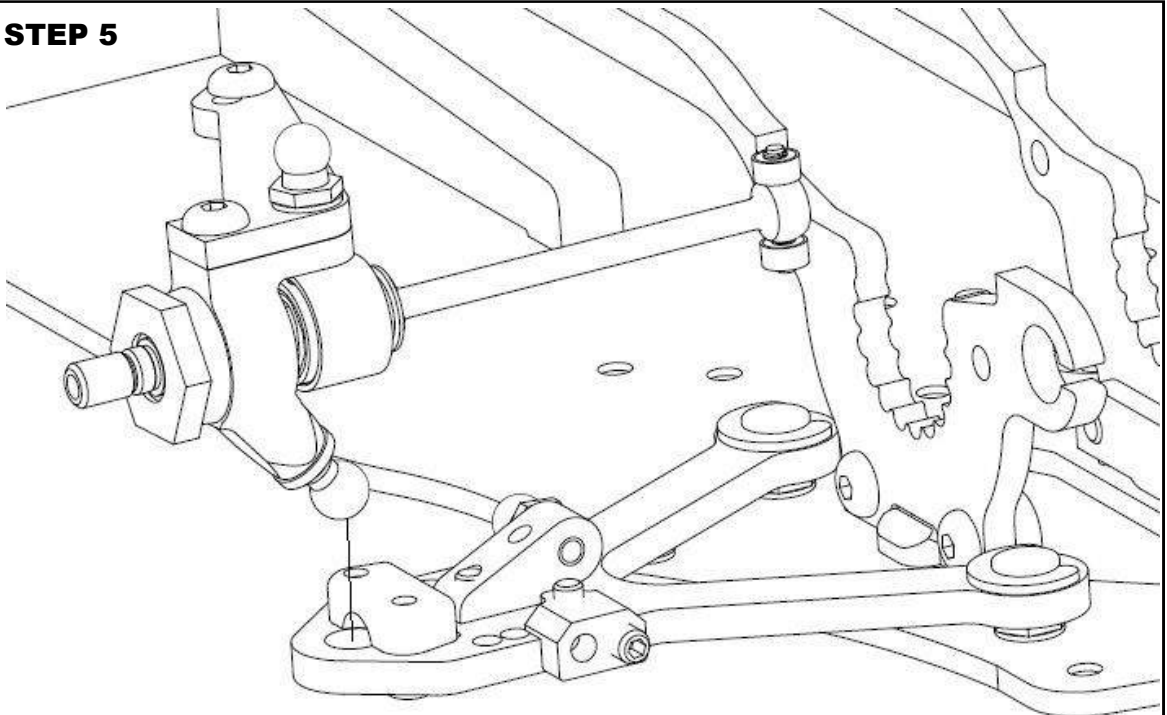
NOTE: When pressing P16 on for the first time it may need some pressure. To disassemble hit the end face of the axel.



FINISHED REAR UPRIGHTS

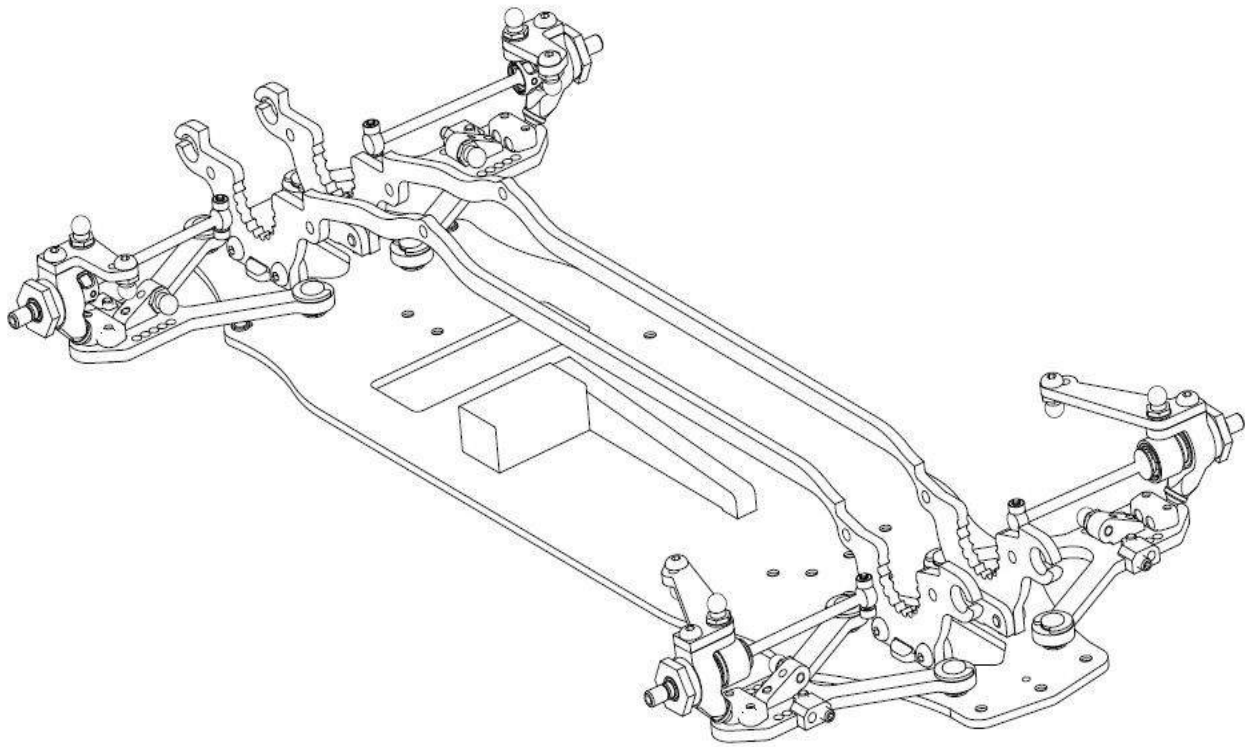


BAG C STEP 5



NOTE: mount all four corners and tighten down P04. Achieve free action, but with minimal play.

BAG C FINISHED





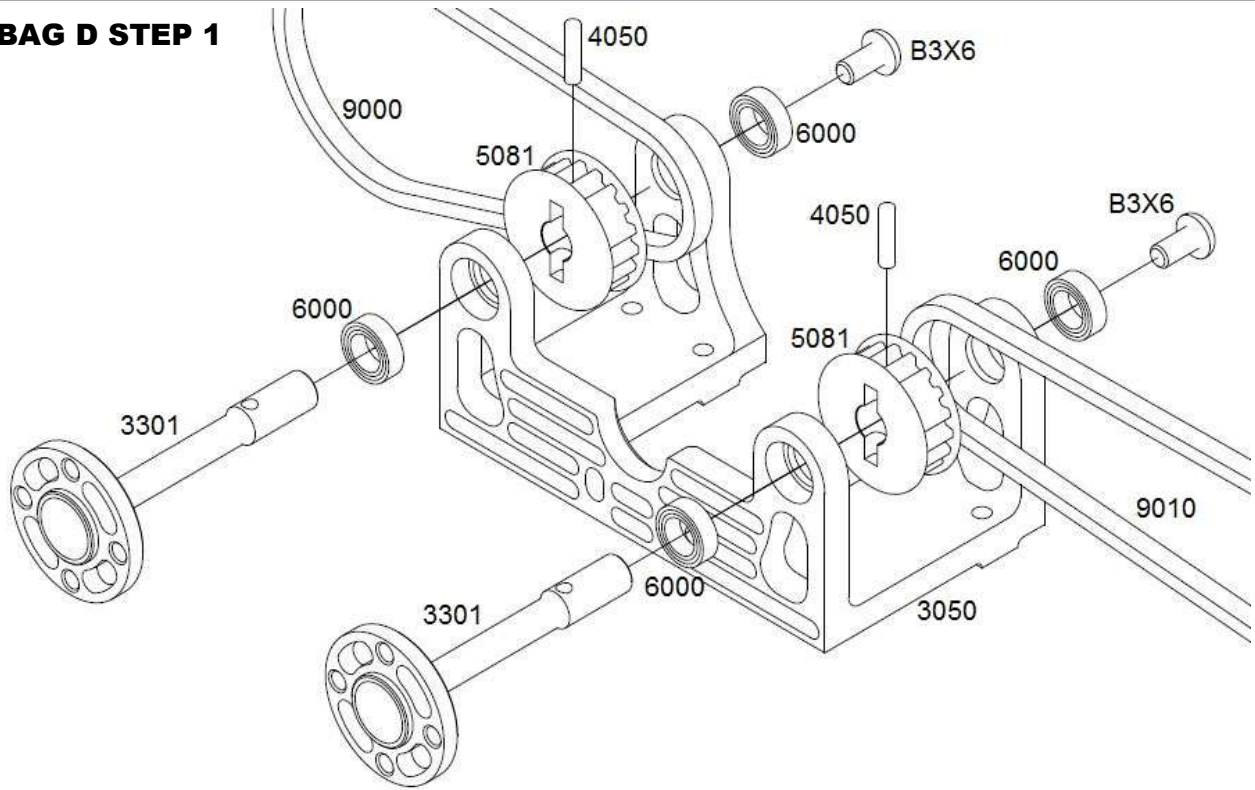
BAG D INCLUDES

1 X 3050	Motor mount
4 x 6005	Bearing 4x8x2,5
2 X 3301	Shaft for pulley
2 X 5081	18T pulley
1 X 9000	Rear belt
1 x 9010	Front belt
2 X 4050	Pin 2x10mm

SCREWS & SHIMS NEEDED

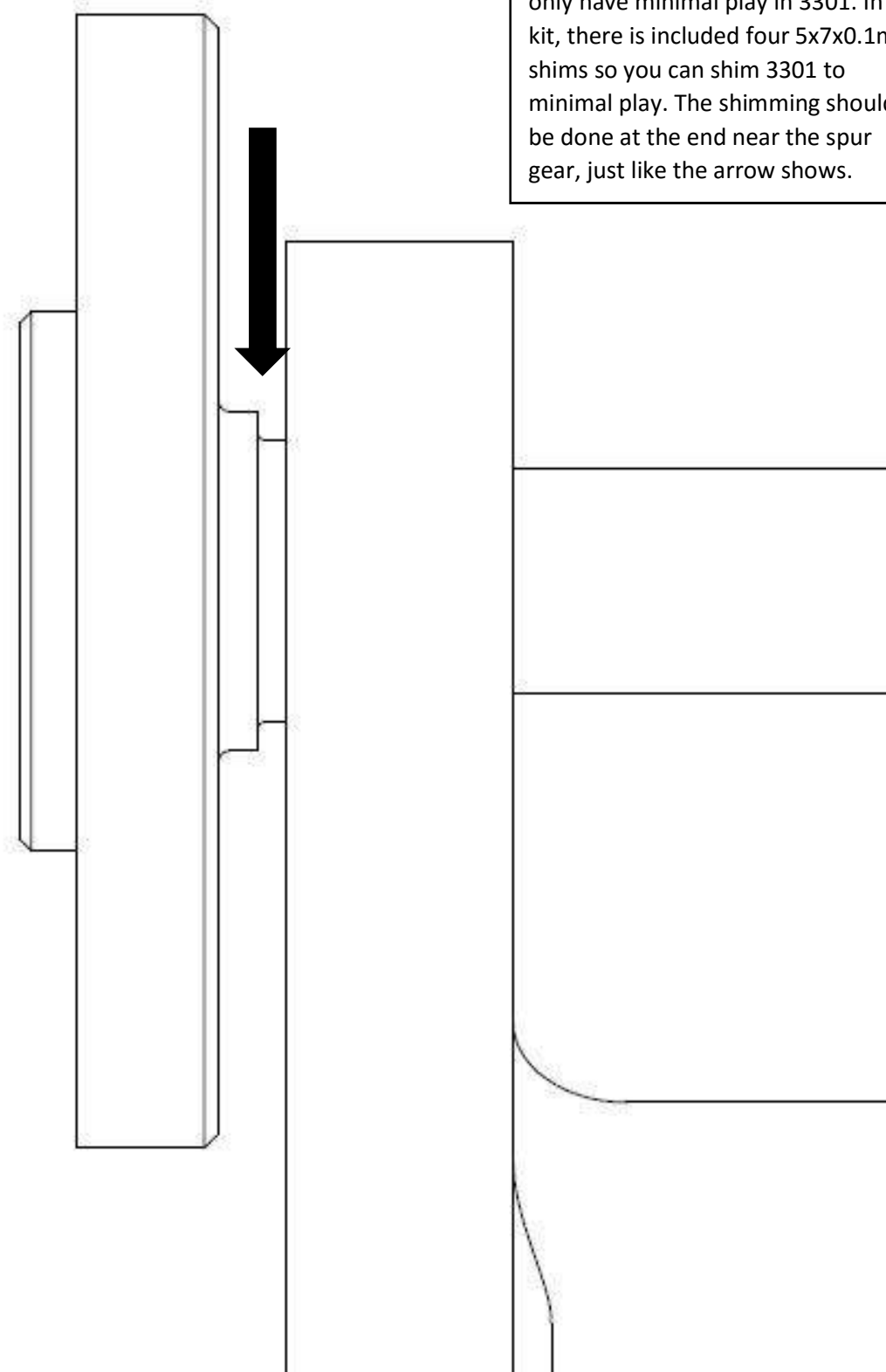
4 X C3X6	Hex screw SFH
2 X P3X6	Set Screw
4 X SHPS	Shim 5x7x0,1mm

BAG D STEP 1

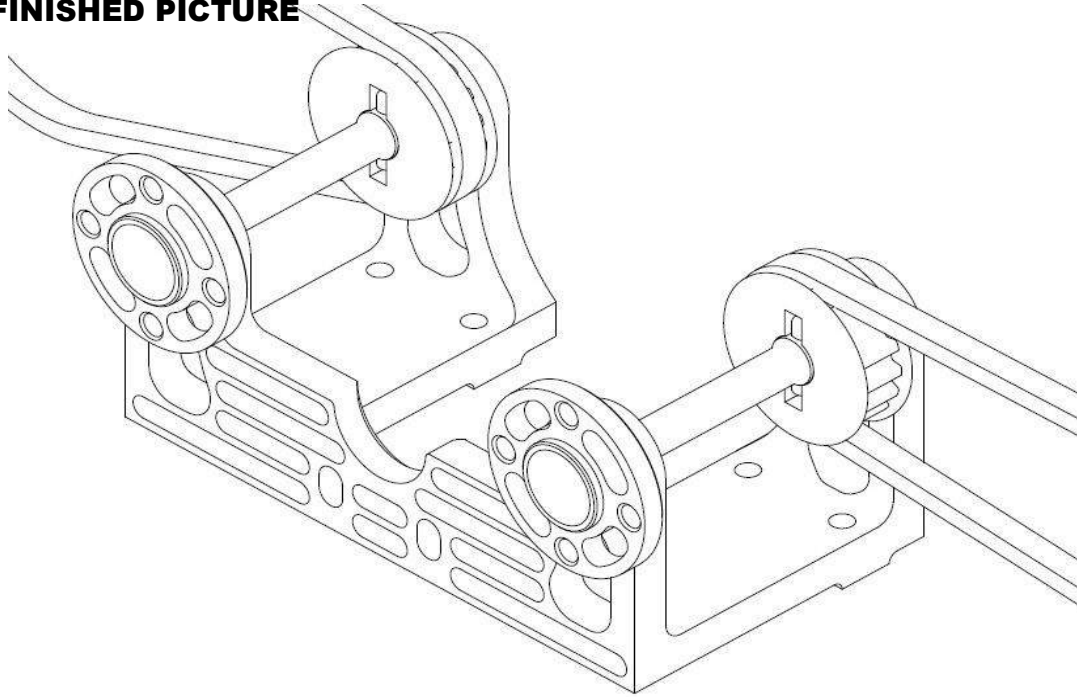


BAG D STEP 1 CONTINUED

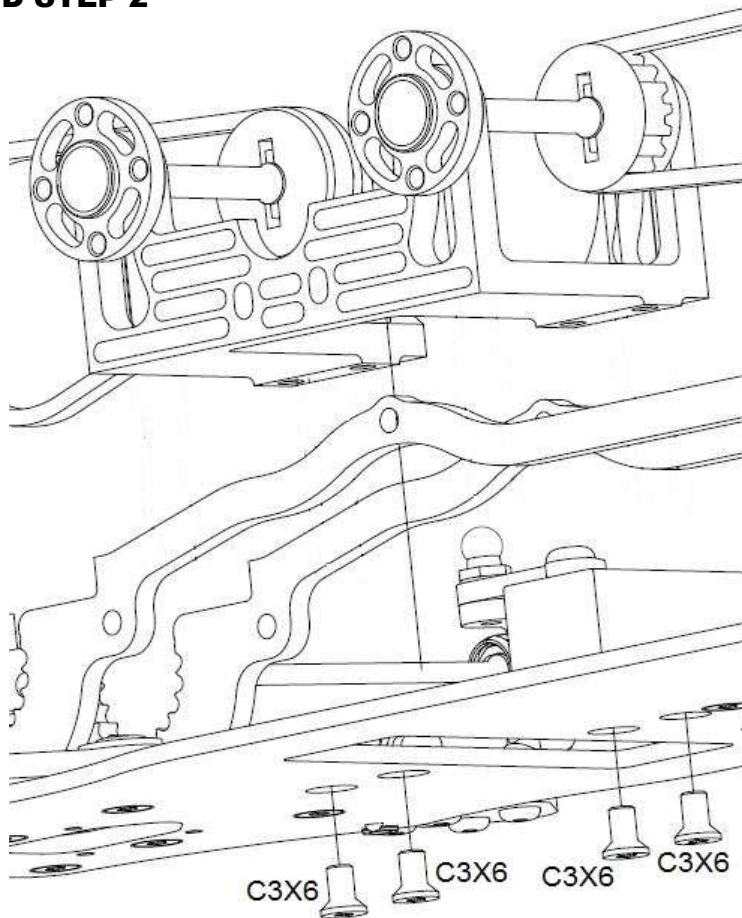
NOTE: When you mount in 3301 into the motor mount, make sure that you only have minimal play in 3301. In the kit, there is included four 5x7x0.1mm shims so you can shim 3301 to minimal play. The shimming should be done at the end near the spur gear, just like the arrow shows.



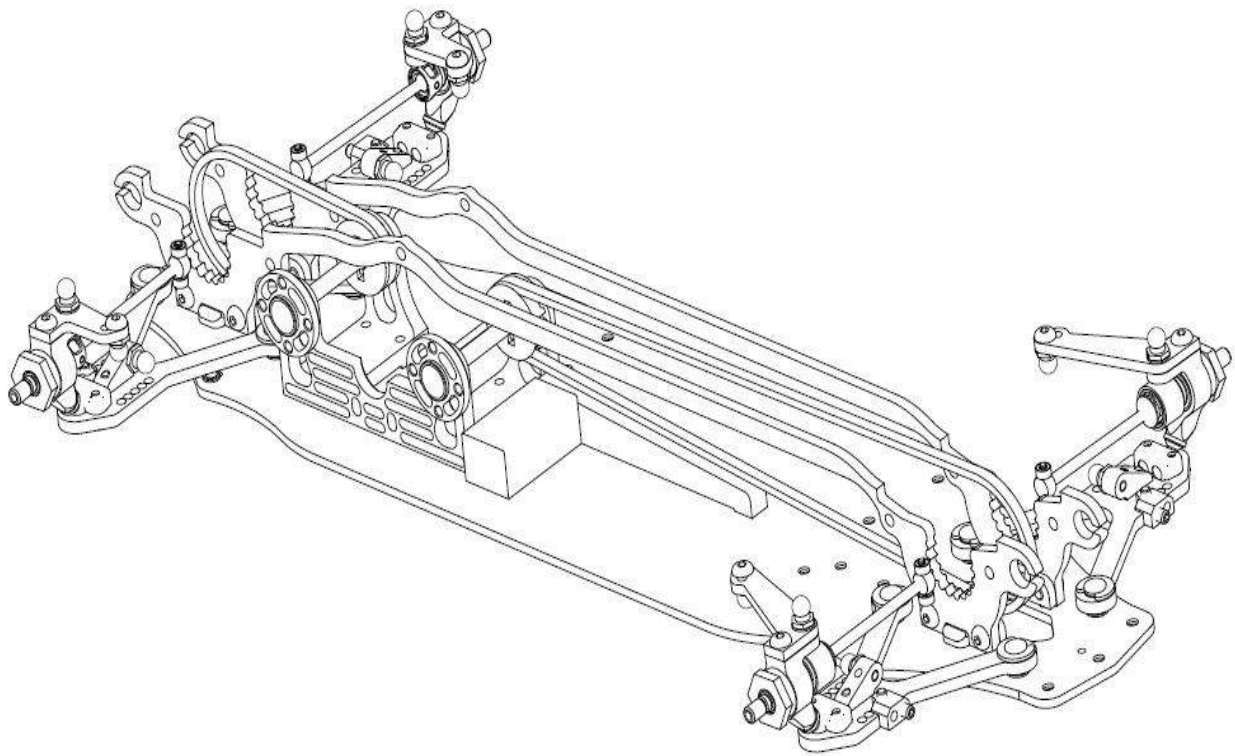
PRE-FINISHED PICTURE



BAG D STEP 2



BAG D FINISHED





BAG E INCLUDES

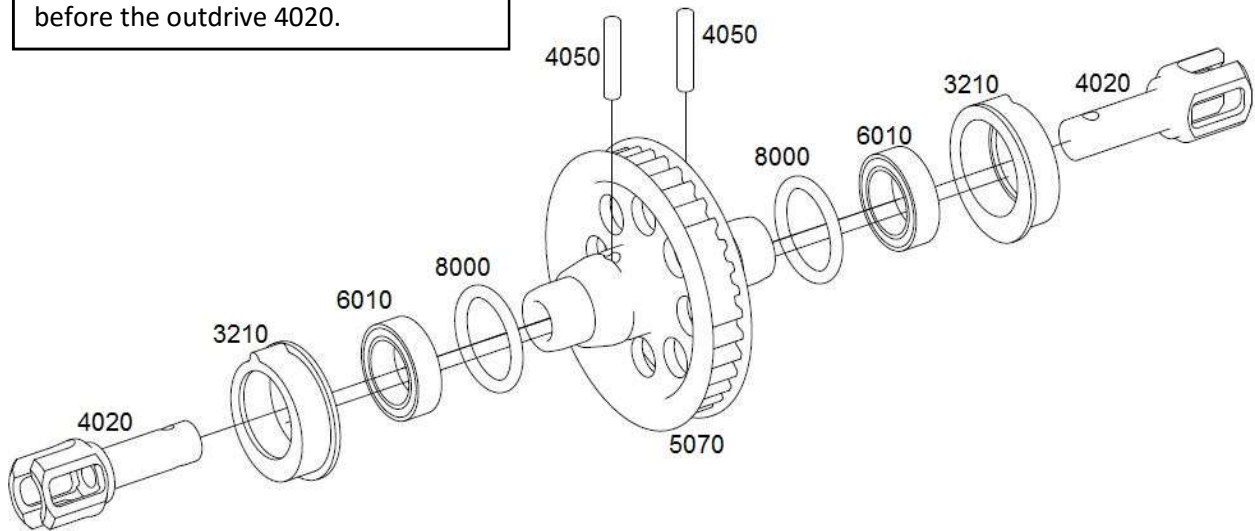
1 X 5071	Spool
1 x 5010	Diff left
1 X 5020	Diff right
4 X 4020	Outdrive
2 X 4050	Pin 2x10mm
2 x 4055	Pin 2x8mm
1 X 8010	O-ring 24x1mm
1 X 304990	Diff gasket
1 x 304930	Diff gear set
4 x 964031	Diff washer 3,5x10x0,2mm
2 X 964050	Diff washer 5x15x0,3mm
4 x 6010	Bearing 8x12x3,5
4 x 3210	Diff excentric
1 x 304980	Diff cross
2 x 8020	O-ring 5x2mm
2 x 8000	O-ring 6x2,5mm

SCREWS & SHIMS NEEDED

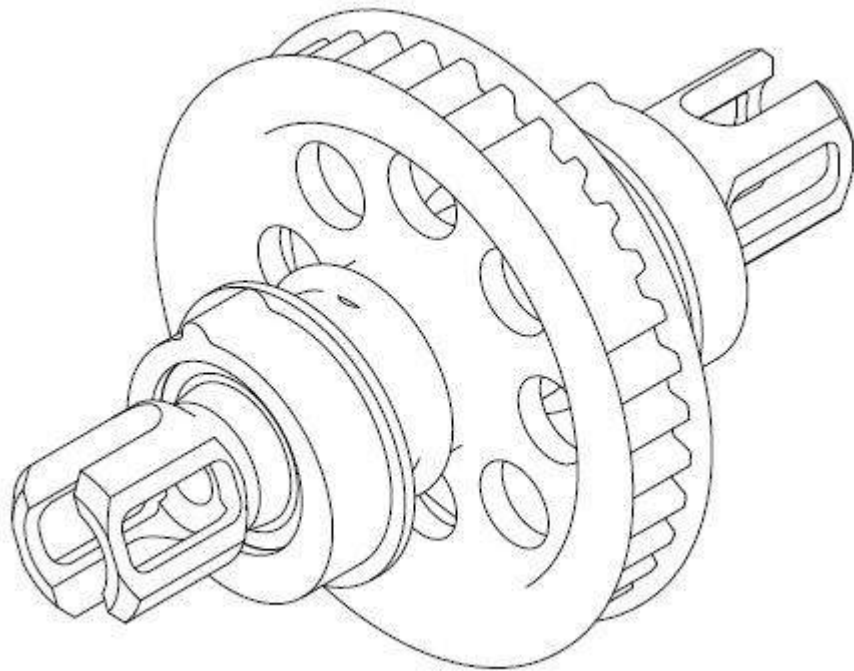
4 X C2,5X8	Hex screw SFH
-------------------	----------------------

BAG E STEP 1

NOTE: when assembling the spool, you need to mount the bearings 6010 before the outdrive 4020.

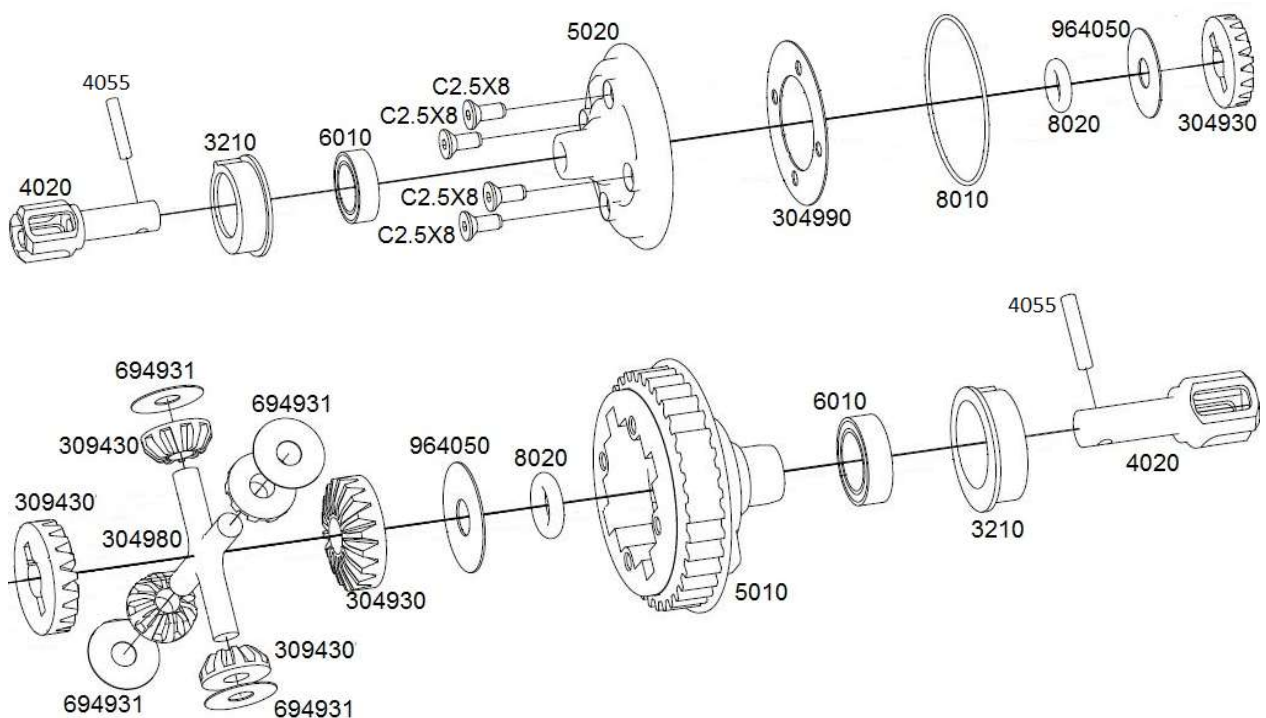


PRE-FINISHED PICTURE



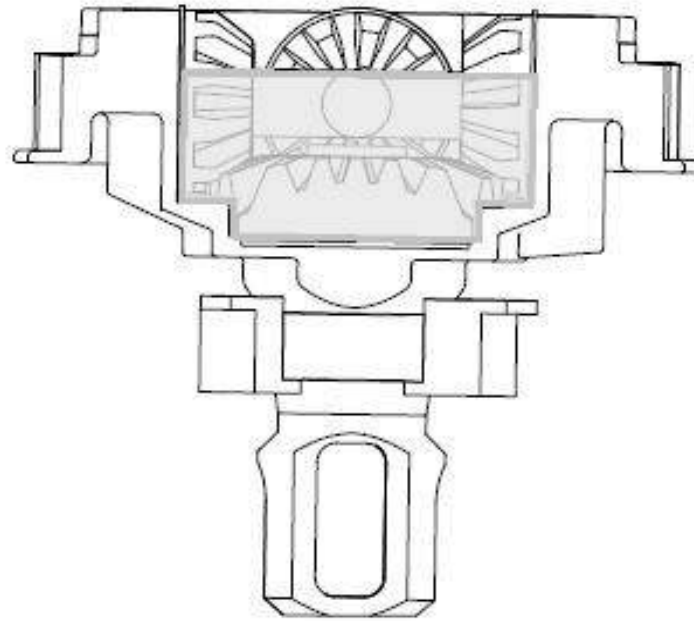
BAG E STEP 2

NOTE: when assembling the diff halves, note that you need to put on the bearing 6010 before you put on outdrive 4020. You also need to install 8020 and 964050, before you install 4050.

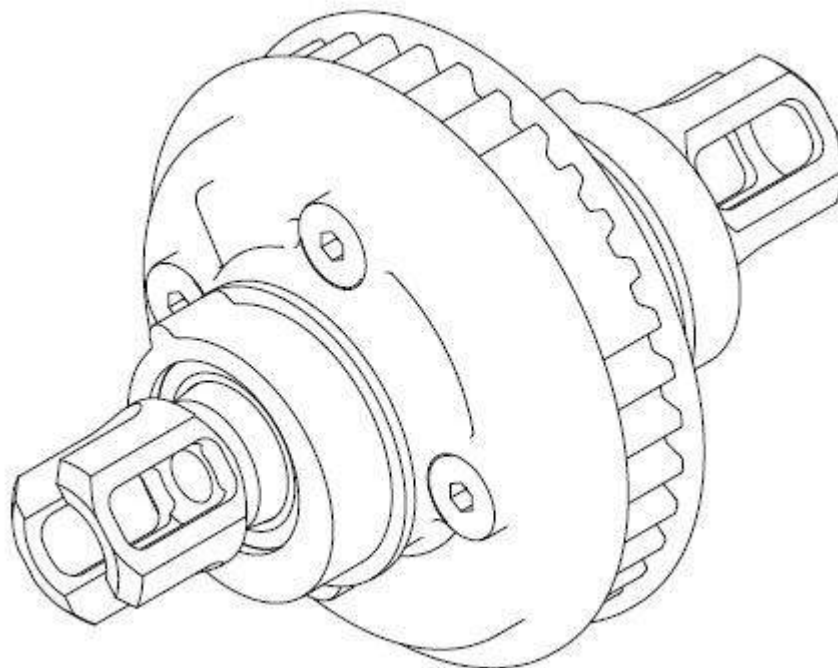


BAG E STEP 3

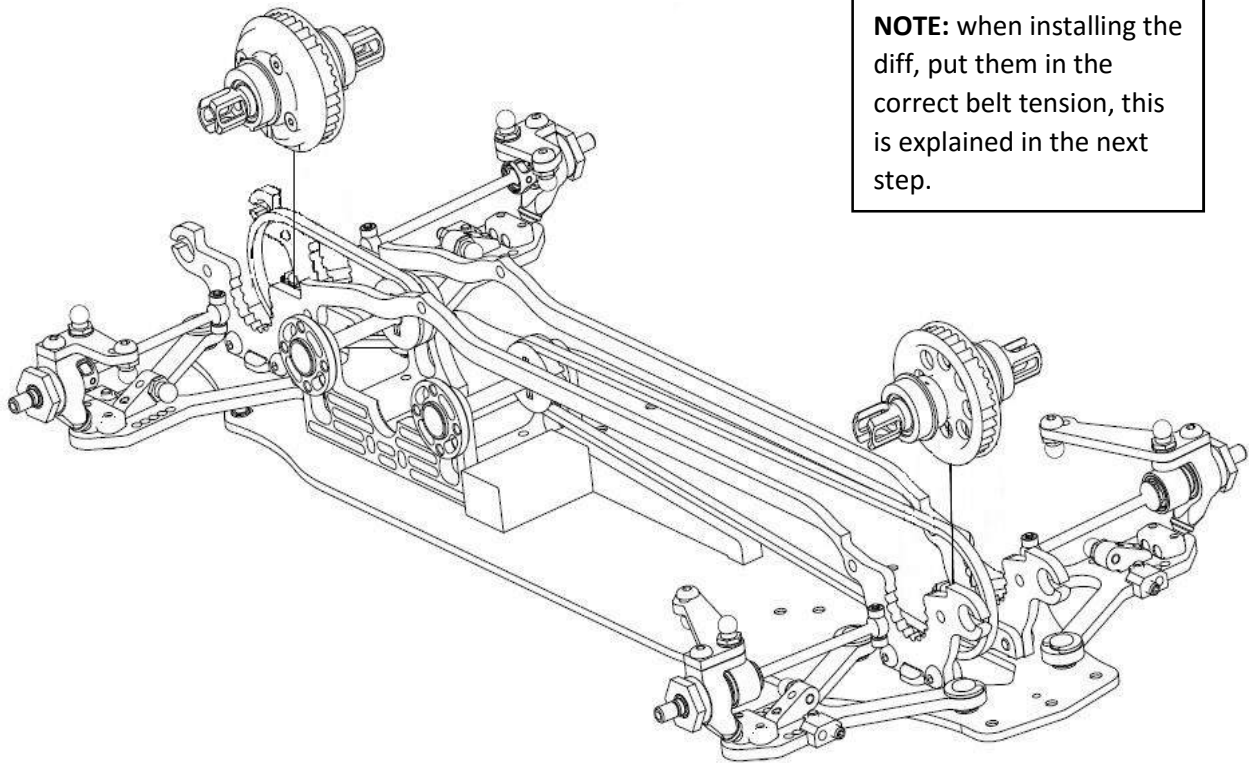
NOTE: when filling the geardiff with diff oil, fill diff oil up to the top of the diff cross pin, you can also weight the diff with oil in it, the weight should be $\approx 12,5g$



PRE-FINISHED PICTURE



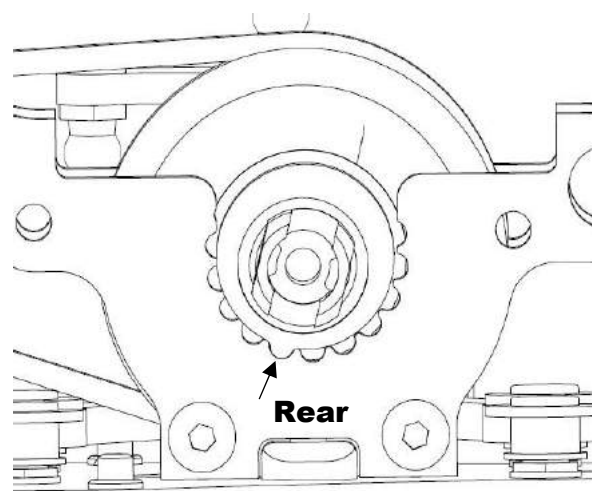
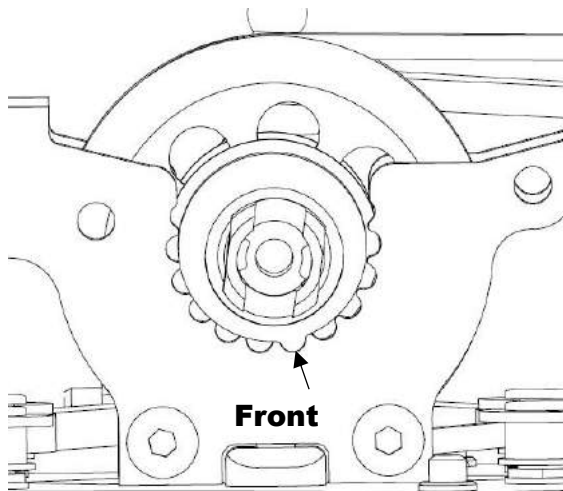
BAG E STEP 4



NOTE: when installing the diff, put them in the correct belt tension, this is explained in the next step.

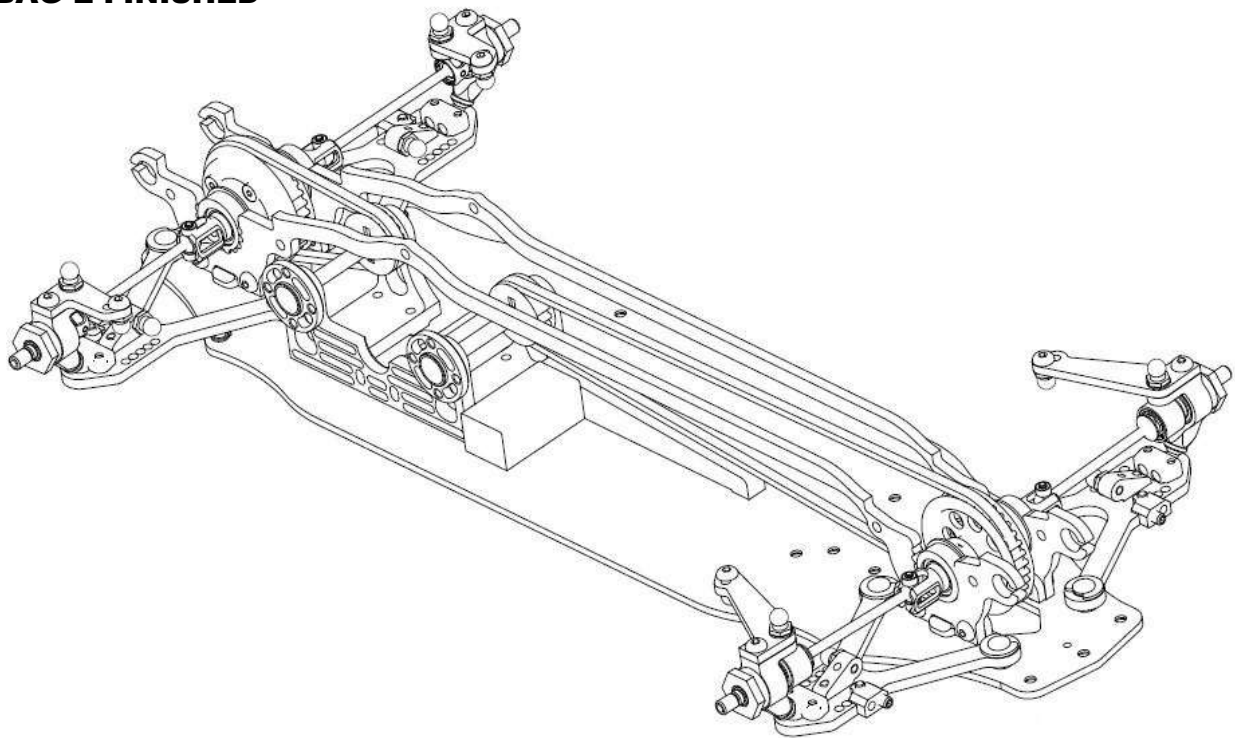
BAG E STEP 4 CONTINUED

NOTE: The correct belt tension position, is the position showed below, its one notch against the motor mount in both front and rear.



Front of chassis

BAG E FINISHED





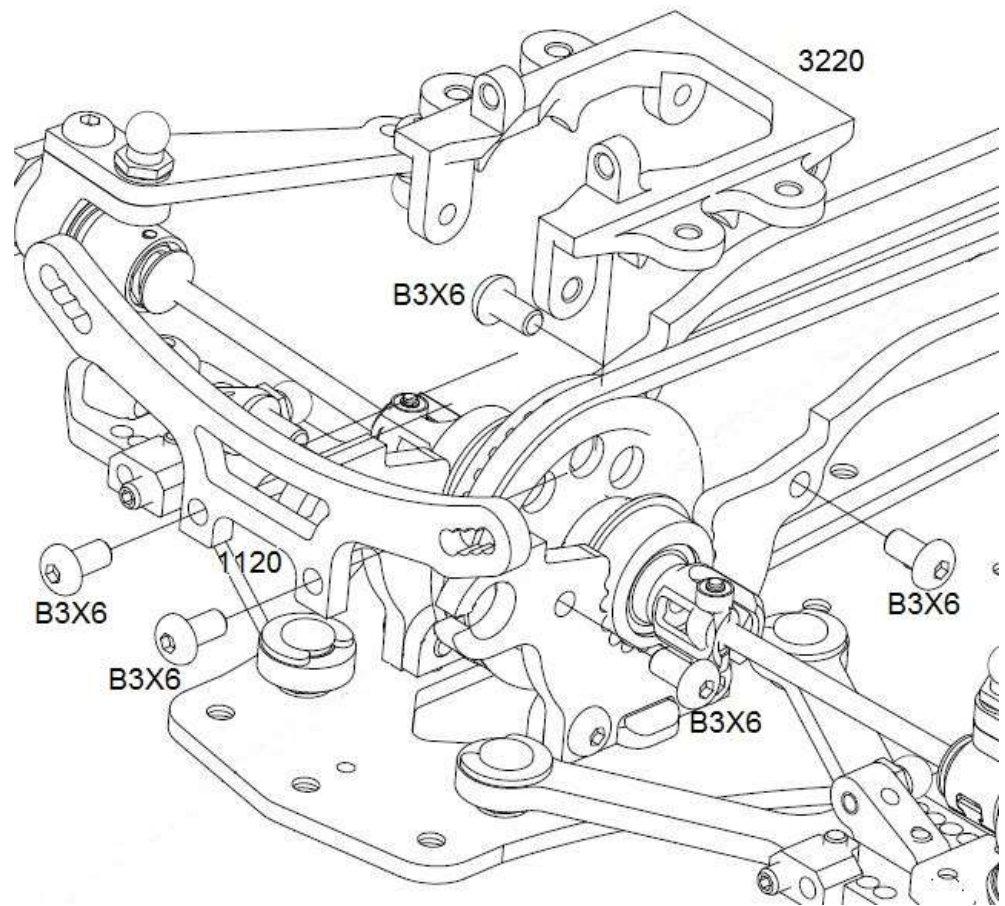
BAG F INCLUDES

4 X 1210	Caster plate
4 x 3140	Upper wishbone
4 X 4060	Turnbukles 3/4x30mm
8 X 5060	Ball Joint
2 X 3281	Ball for ball joints
1 x 3230	Upper mount rear
1 X 3220	Upper mount front
1 X 1120	Shock tower front
1 x 1140	Shock tower rear
8 x 5040	Wishbone inserts
8 X 5050	C-clips for wishbone
2 x 3260	Turnbukles 3x30mm
8 x 3280	Ball for ball joints
1 x 304980	Diff cross
2 x 8020	O-ring 5x2mm
2 x 8000	O-ring 6x2,5mm

SCREWS & SHIMS NEEDED

8 X B3x5	Hex screw SFH
14 x B3x6	Hex screw SFH
2 x P3x8	Set screw
8 x SH2,0	Shim 2,0mm

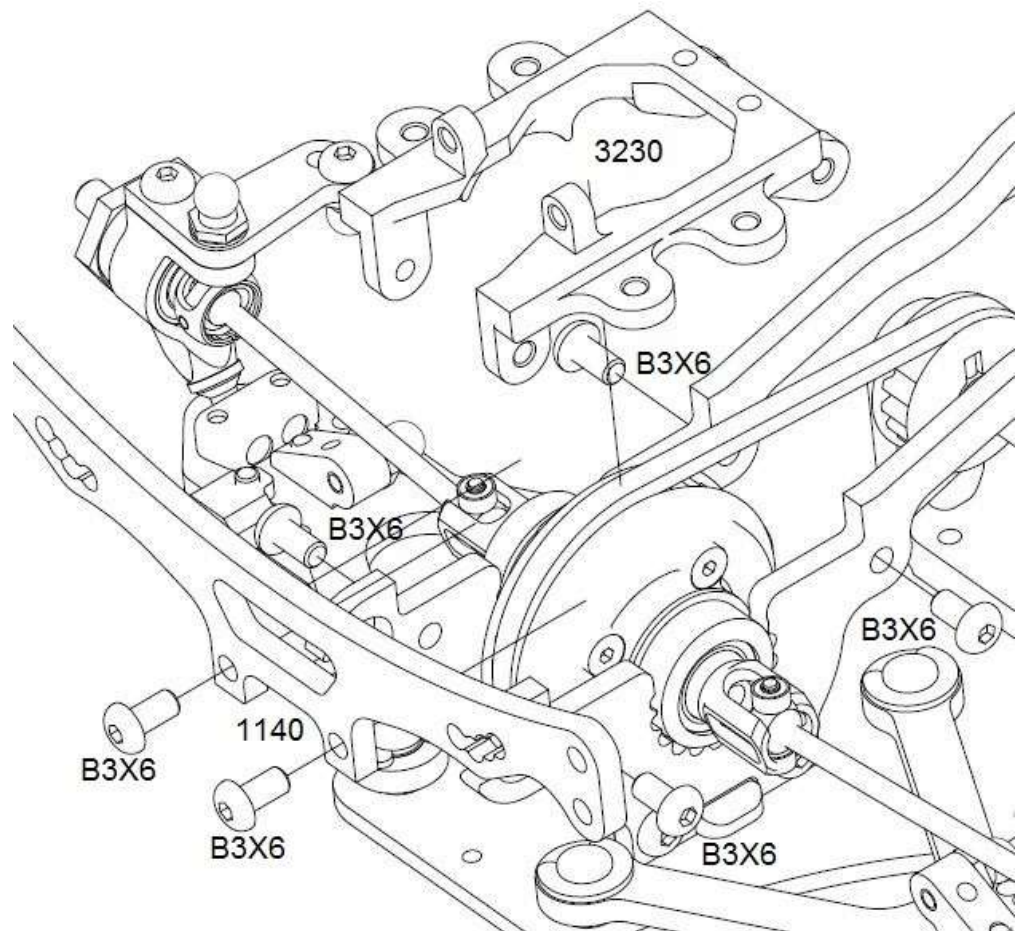
BAG F STEP 1



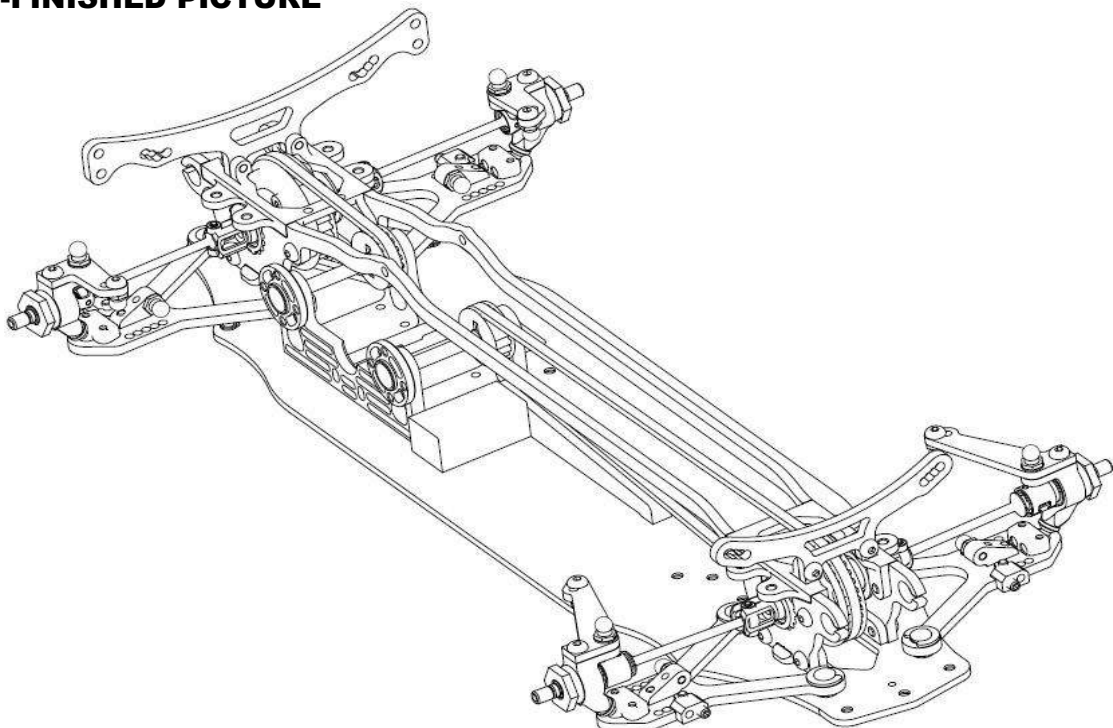
NOTE: You will need to mount 3220 under the front belt.

BAG F STEP 2

NOTE: You will need to mount 3230 under the rear belt.

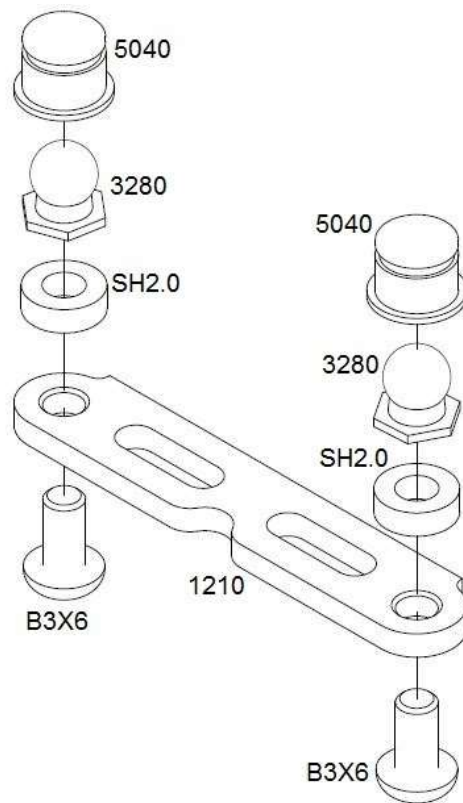


PRE-FINISHED PICTURE



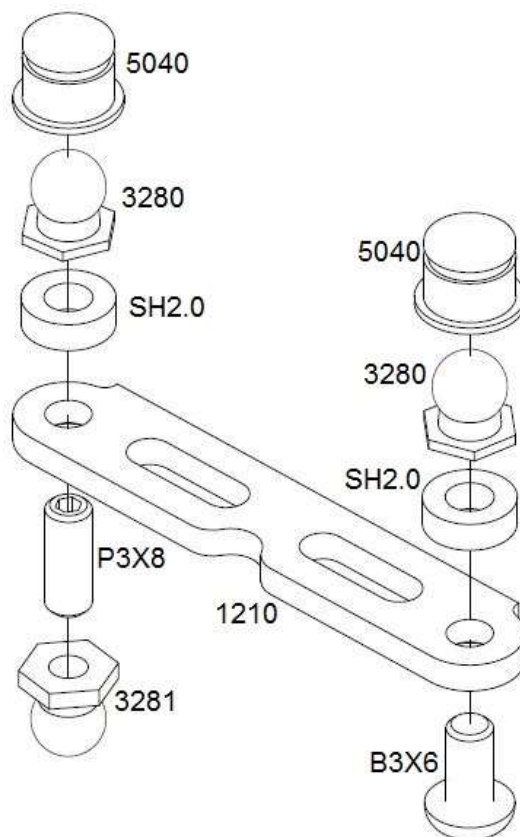
BAG F STEP 2 FRONT

NOTE: You will need to mount 3280 before you snap on 5040.

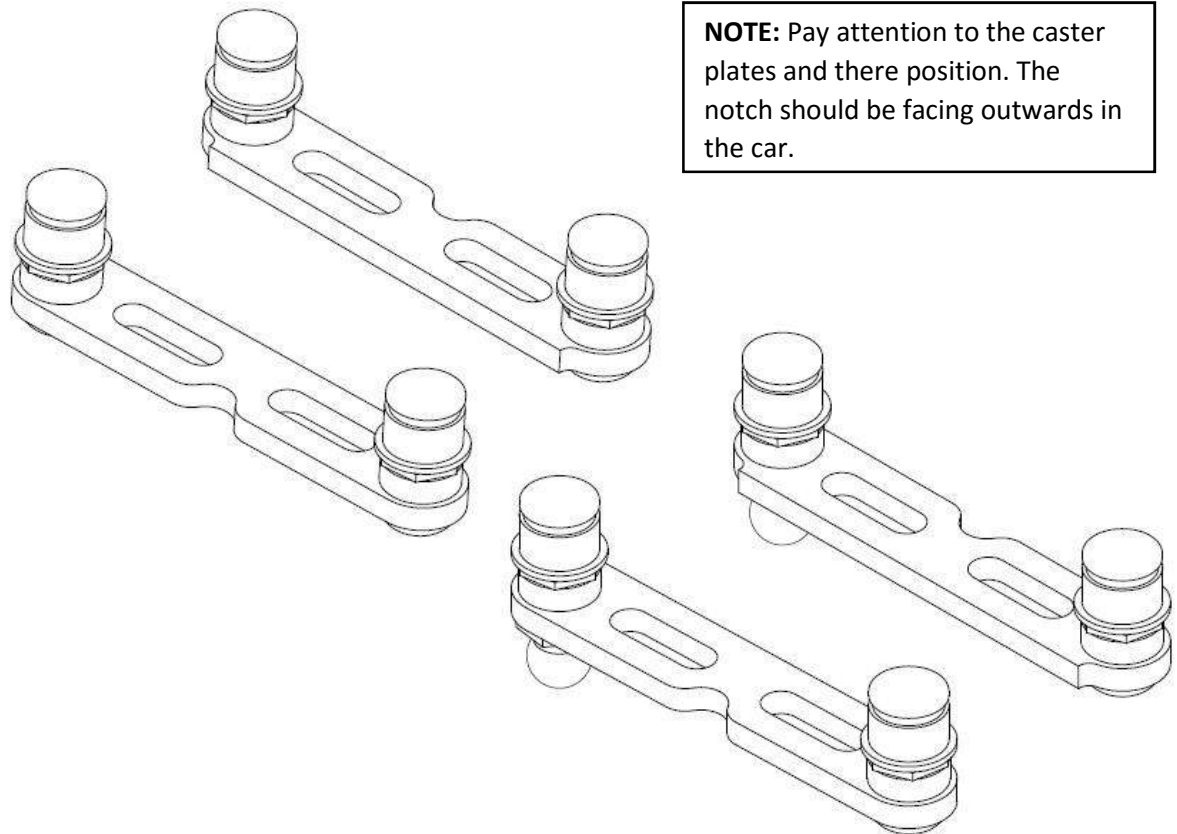


BAG F STEP 3 REAR

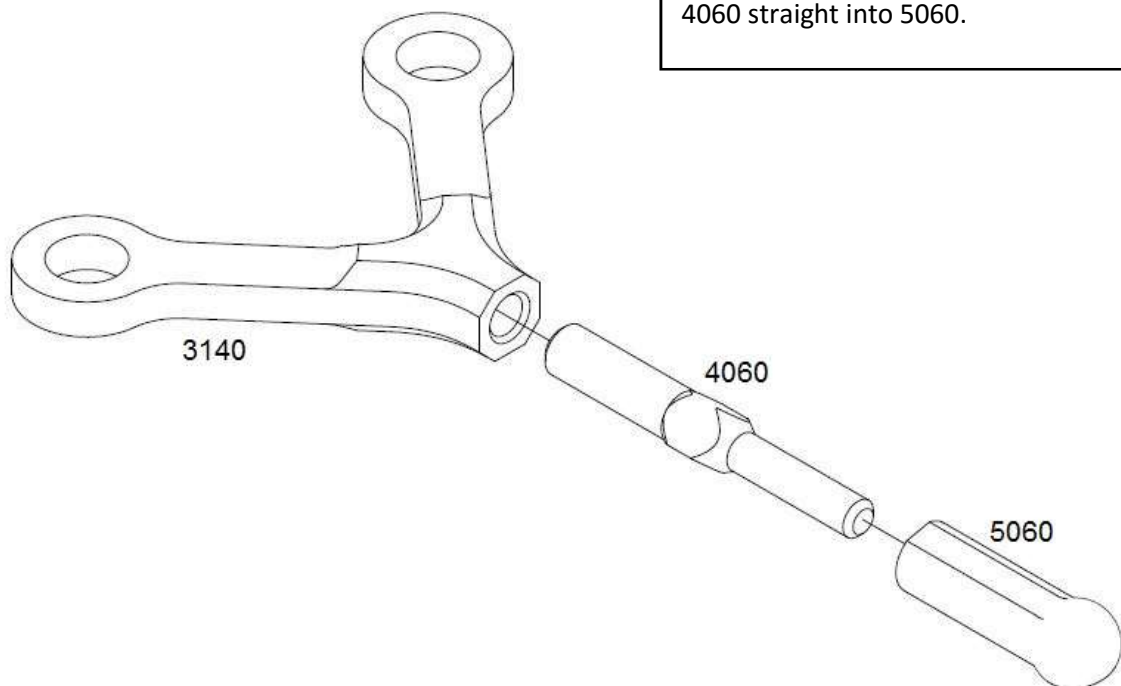
NOTE: You will need to mount 3280 before you snap on 5040. Note that the ball joint 3281 will need to be placed correctly, so that when you mount them the ball will be forward.



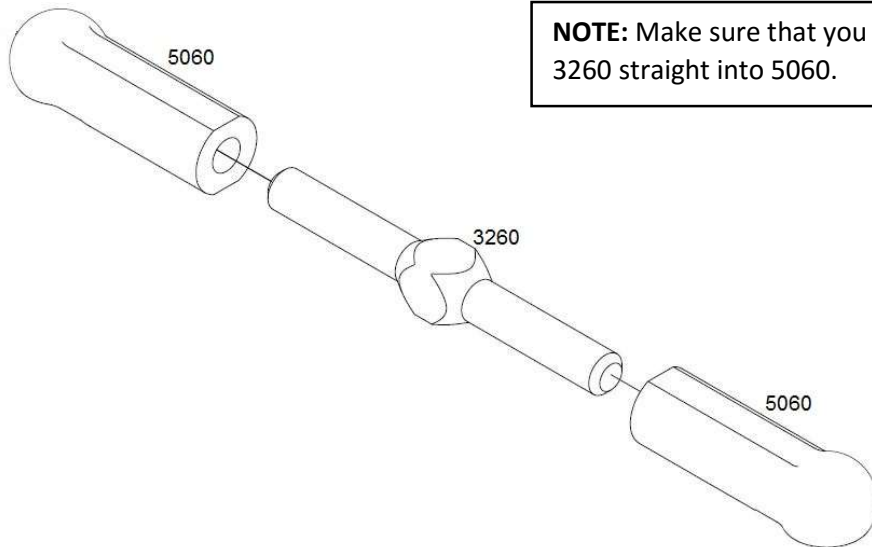
PRE-FINISHED PICTURE



BAG F STEP 4

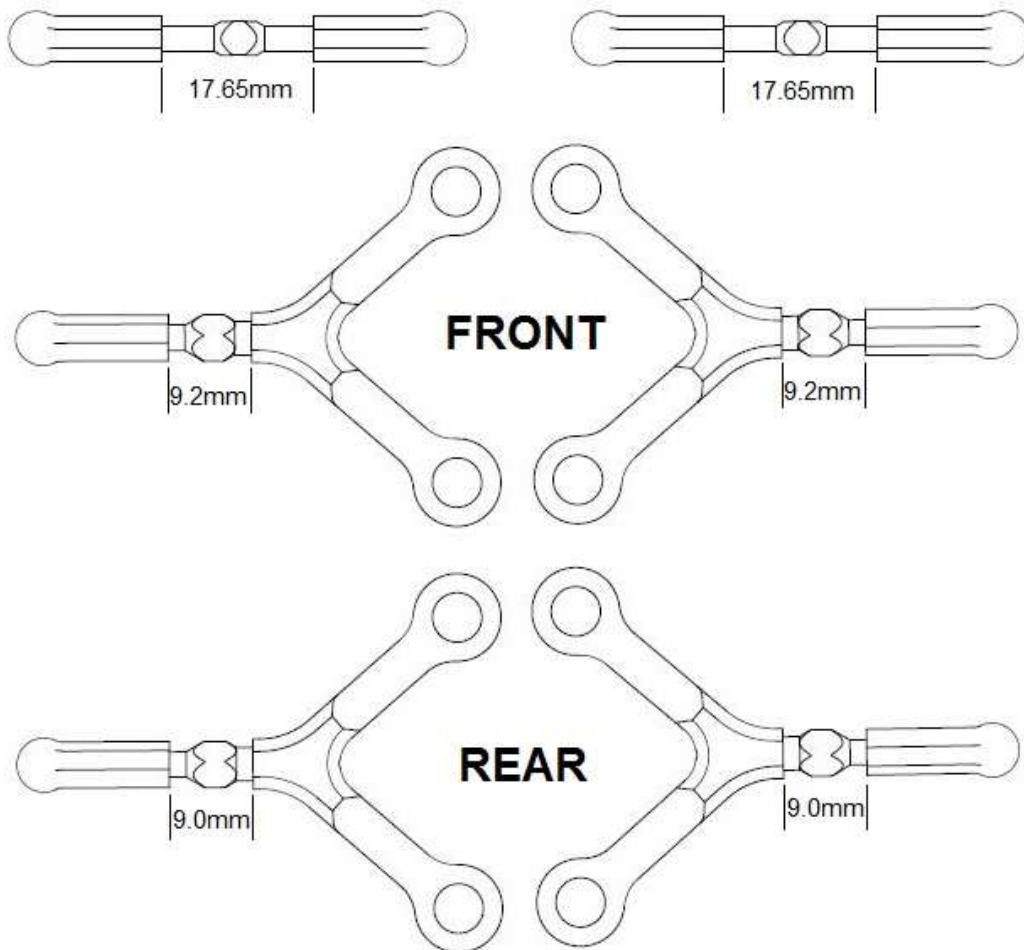


BAG F STEP 5



NOTE: Make sure that you mount 3260 straight into 5060.

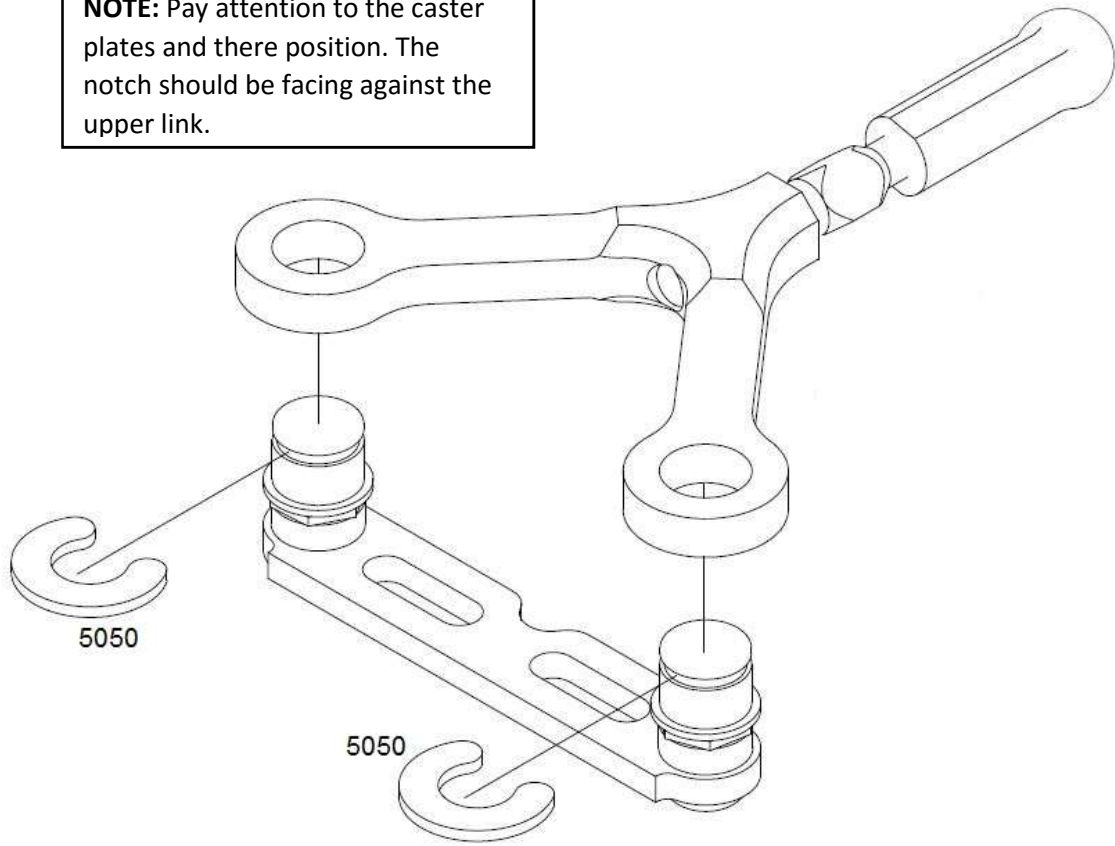
BAG F LENGHTS



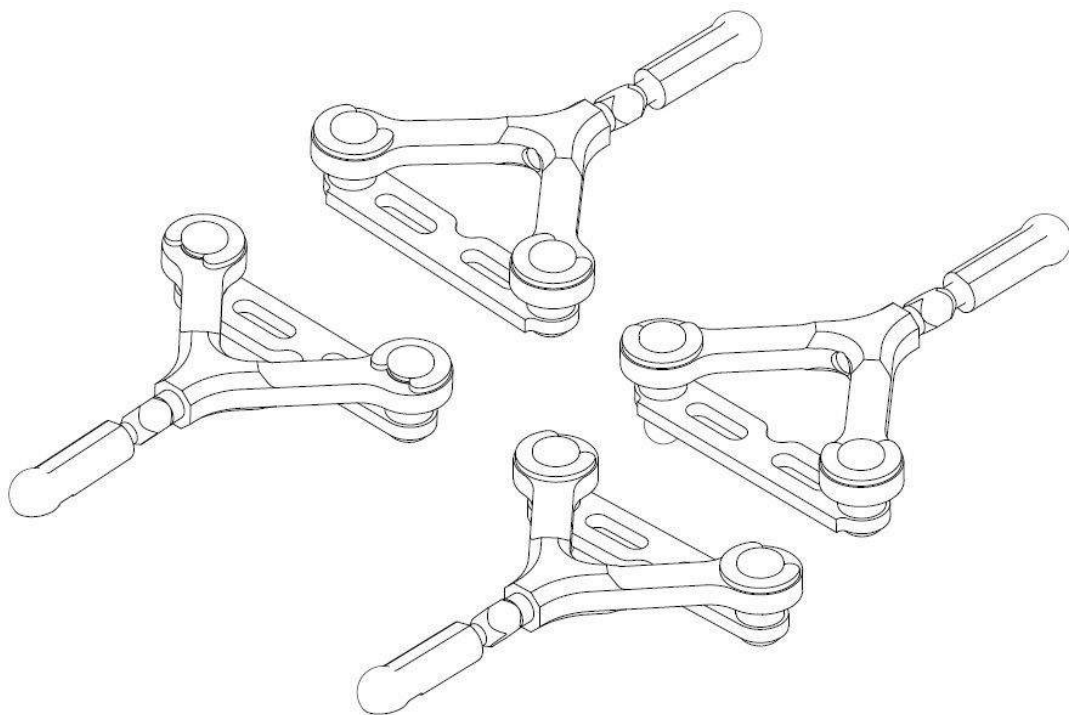
NOTE: the given lengths should give approximately 1° of front camber and 2° of rear camber together with 2.5° of rear toe in.

BAG F STEP 6

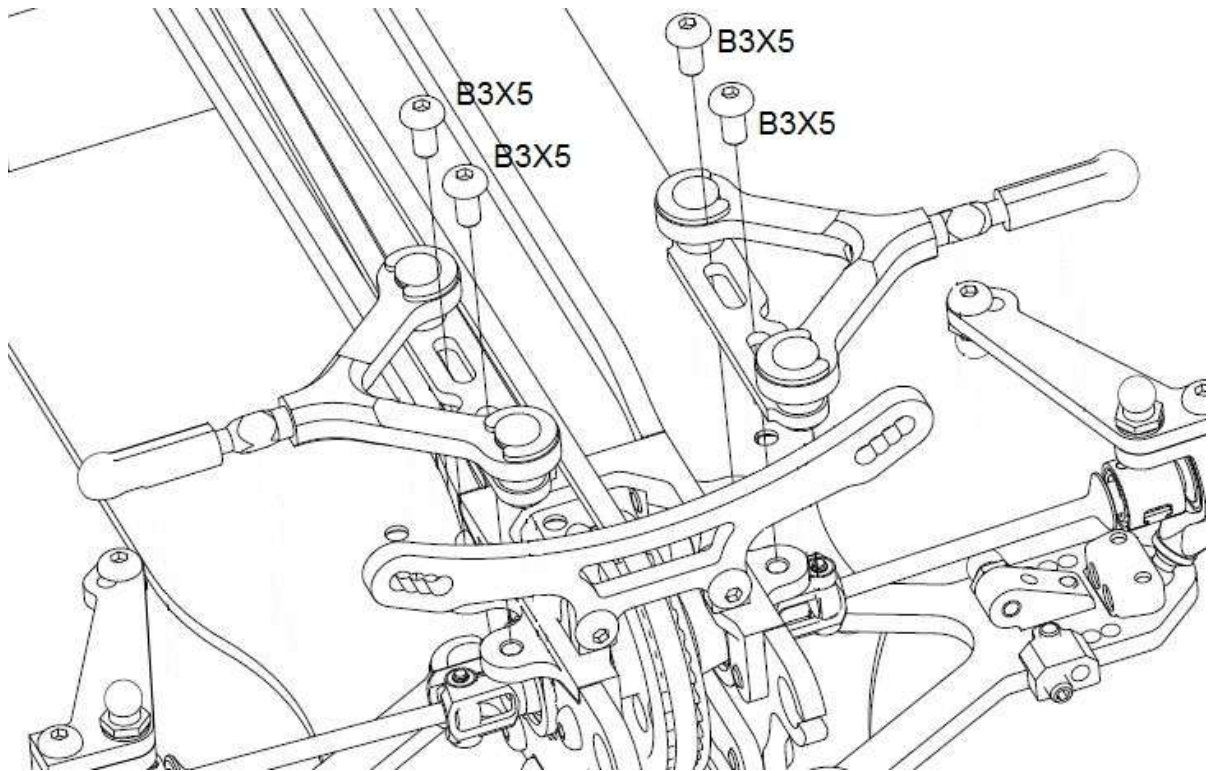
NOTE: Pay attention to the caster plates and there position. The notch should be facing against the upper link.



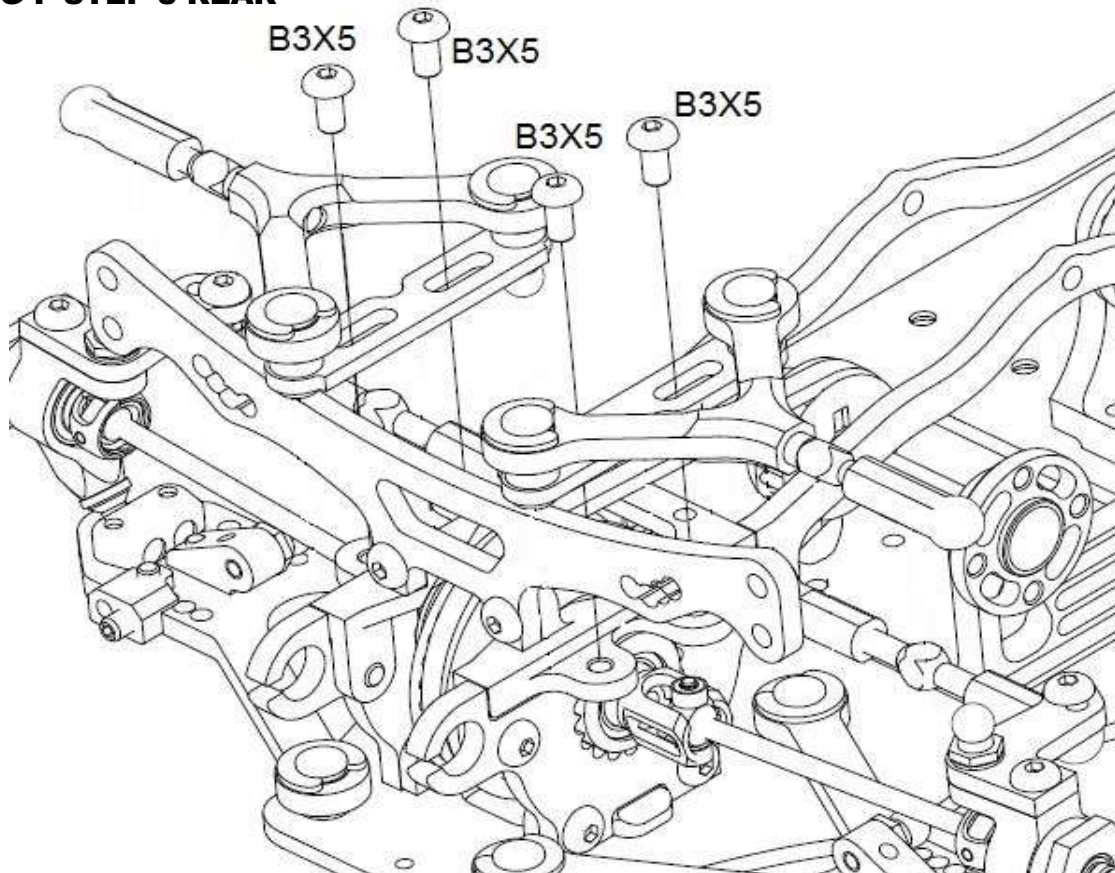
PRE-FINISHED PICTURE



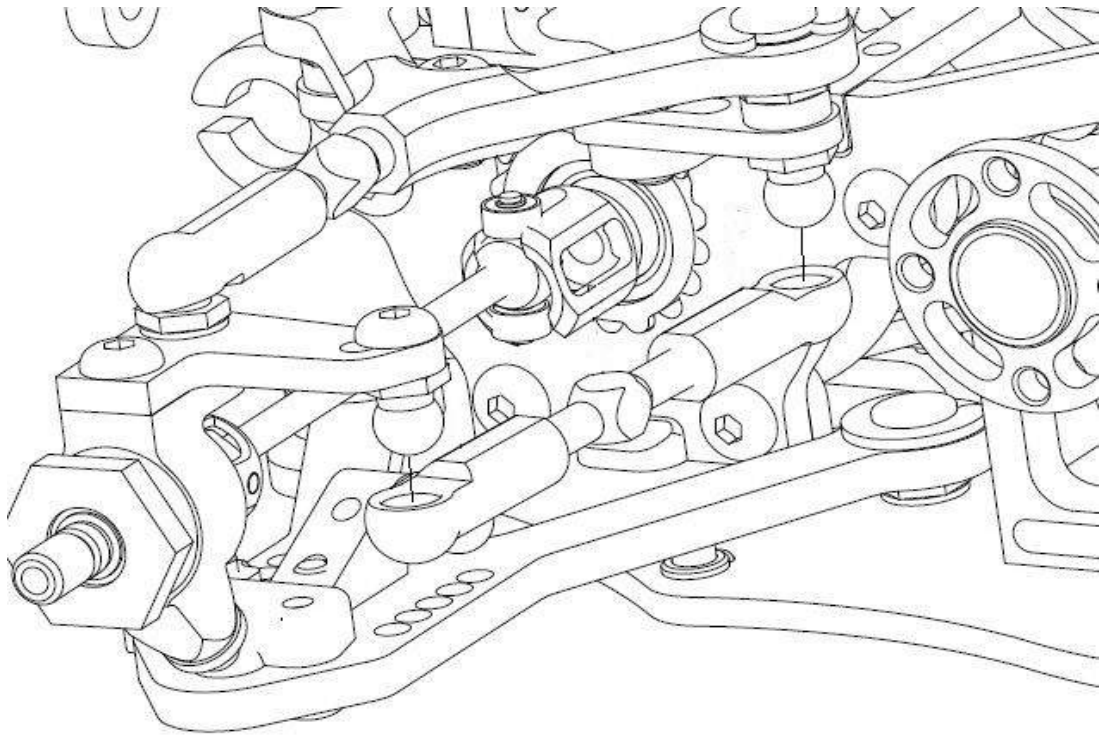
BAG F STEP 7 FRONT



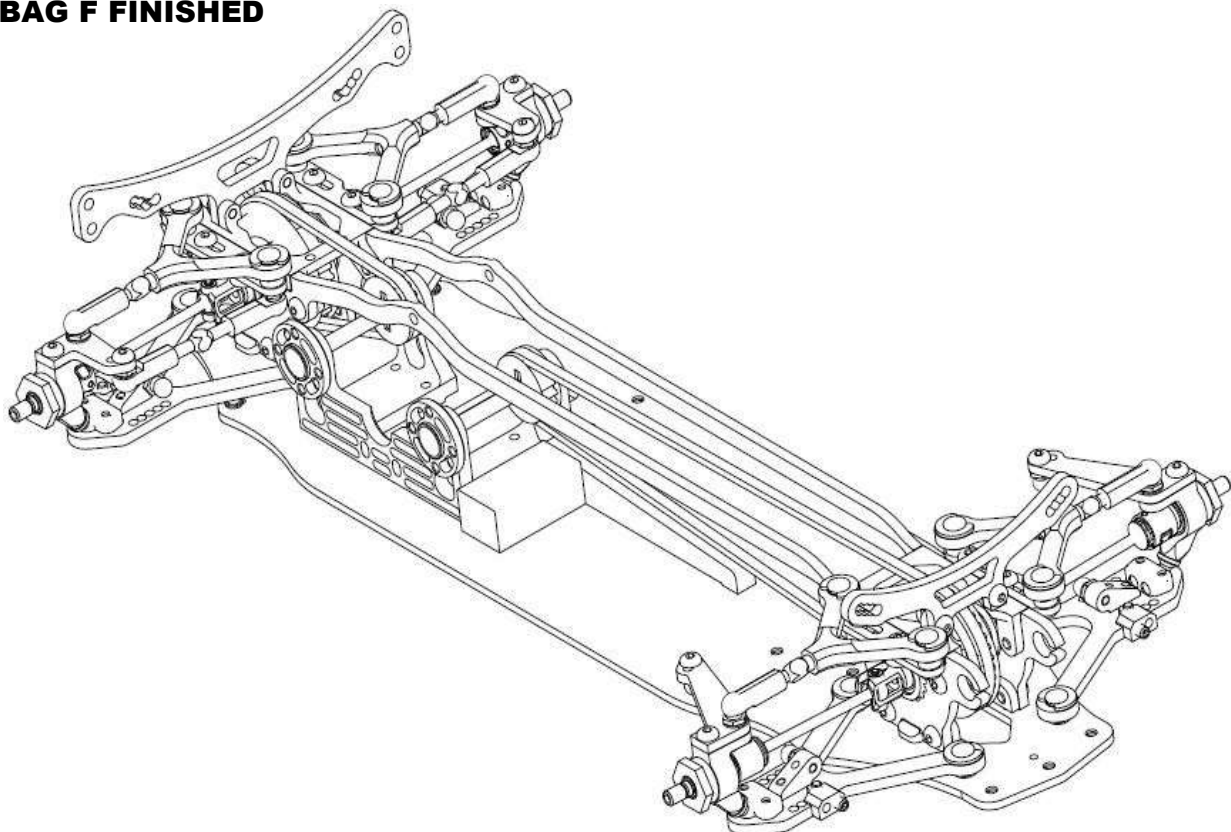
BAG F STEP 8 REAR



BAG F STEP 9



BAG F FINISHED





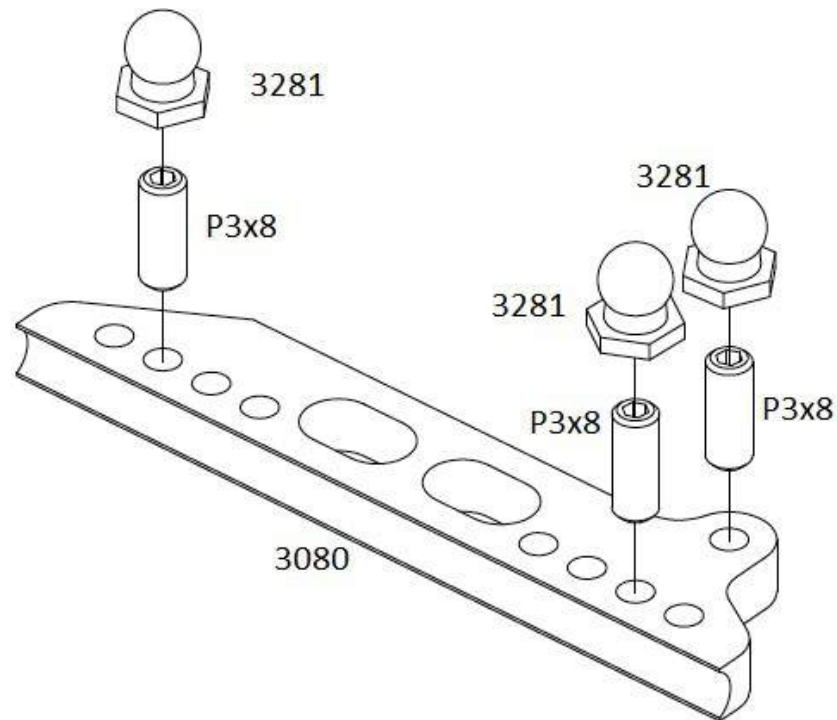
BAG G INCLUDES

1 X 3090	Steering mount
1 x 3100	Servo mount long
1 X 3010	Servo mount short
1 X 3080	Steering rack
3 X 3281	Ball for ball joints
3 x 4040	Steering post
3 X 6000	Bearing 4x8x3
2 X 3260	Turnbulkes 3x27mm
1 x 3270	Turnbukles 3x39mm
6 x 5060	Ball joints
1 X 1150	Servo plate

SCREWS & SHIMS NEEDED

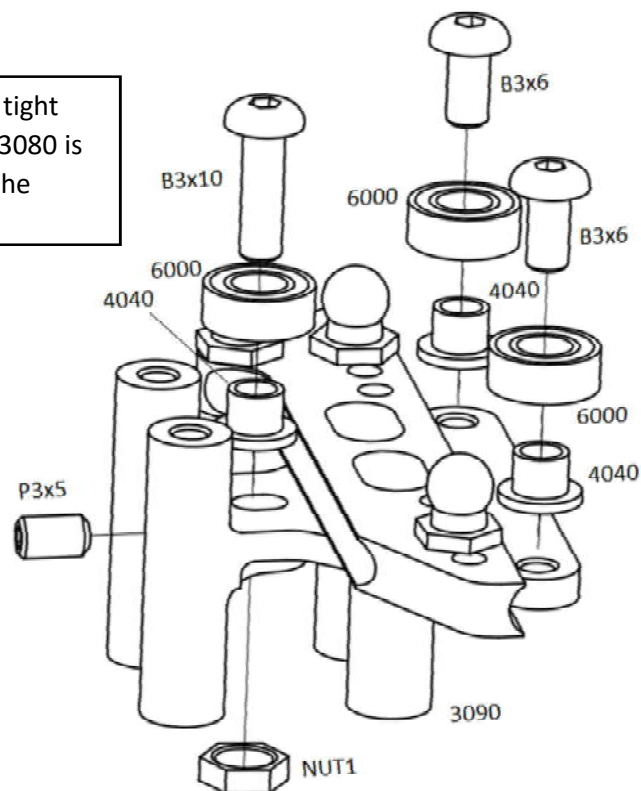
8 x B3x6	Hex screw SFH
2 x B3x8	Hex screw SFH
1 x B3x10	Hex screw SFH
4 x C3x6	Hex screw SFH
1 x P3x5	Set screw
3 x P3x8	Set screw
1 x NUT01	M3 Nut

BAG G STEP 1

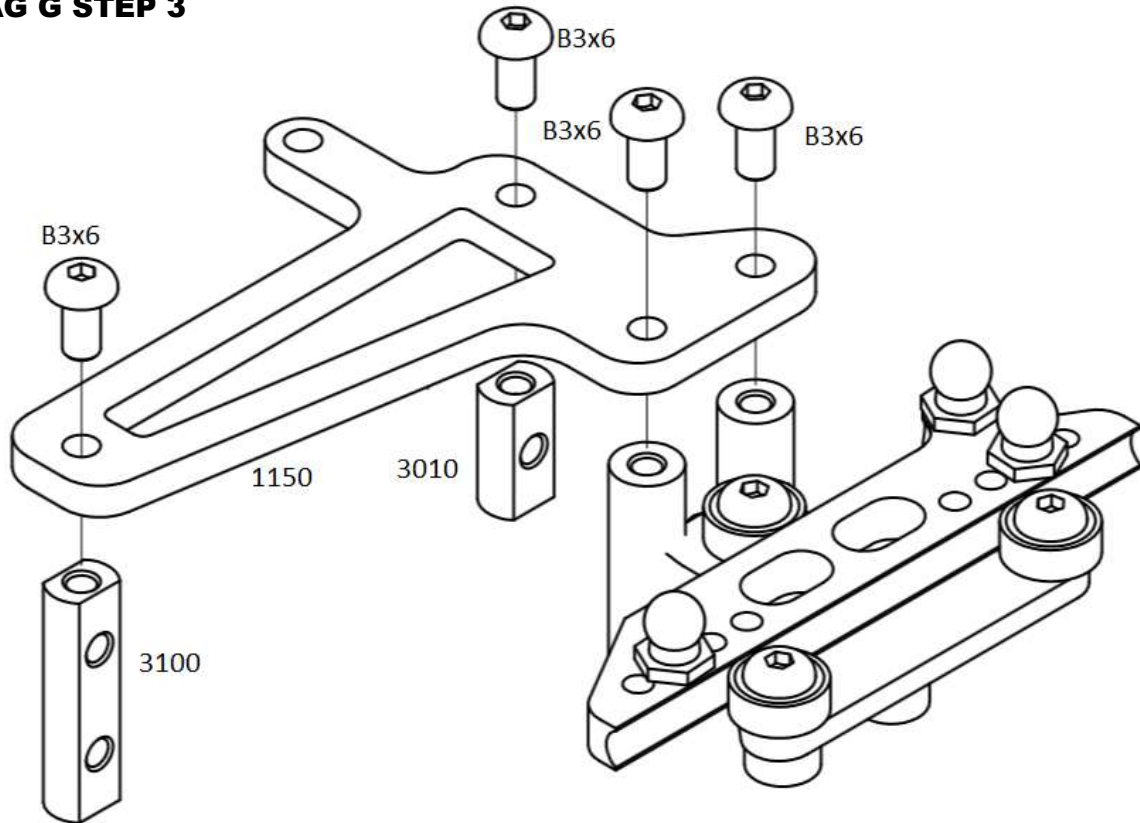


BAG G STEP 2

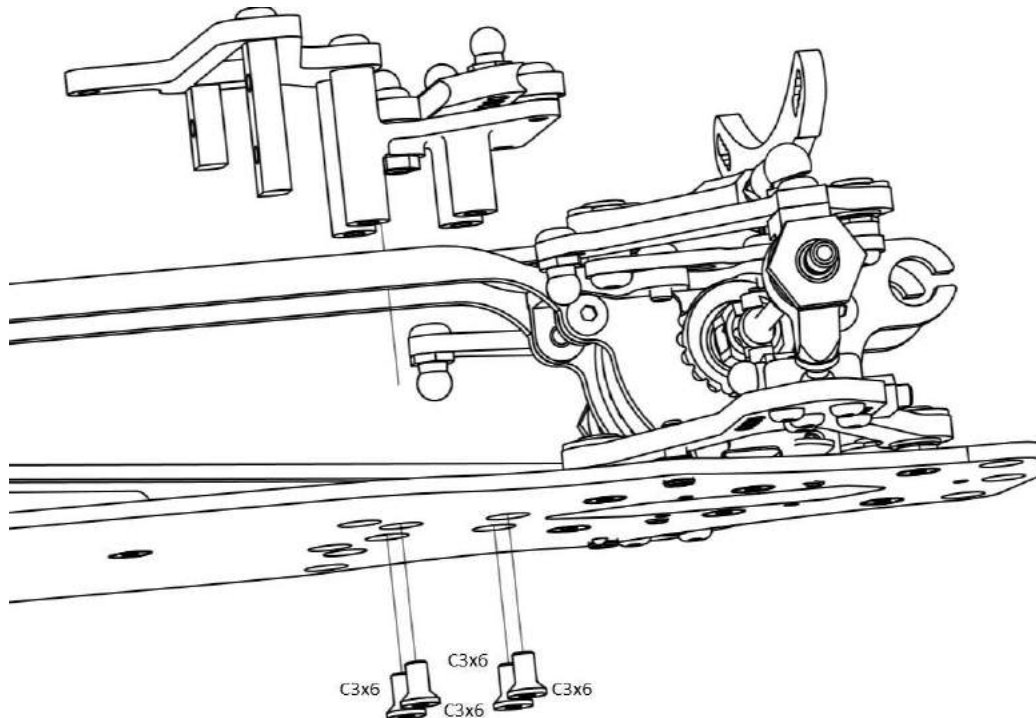
NOTE: Make sure not to tight the P3x5 more than the 3080 is moving freely between the 6000.



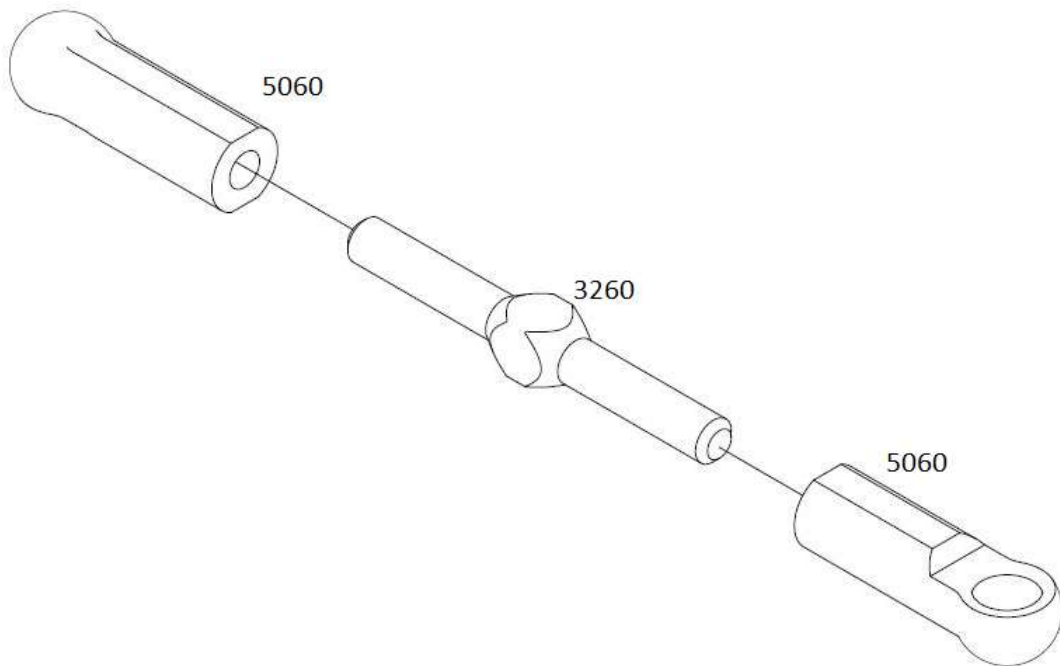
BAG G STEP 3



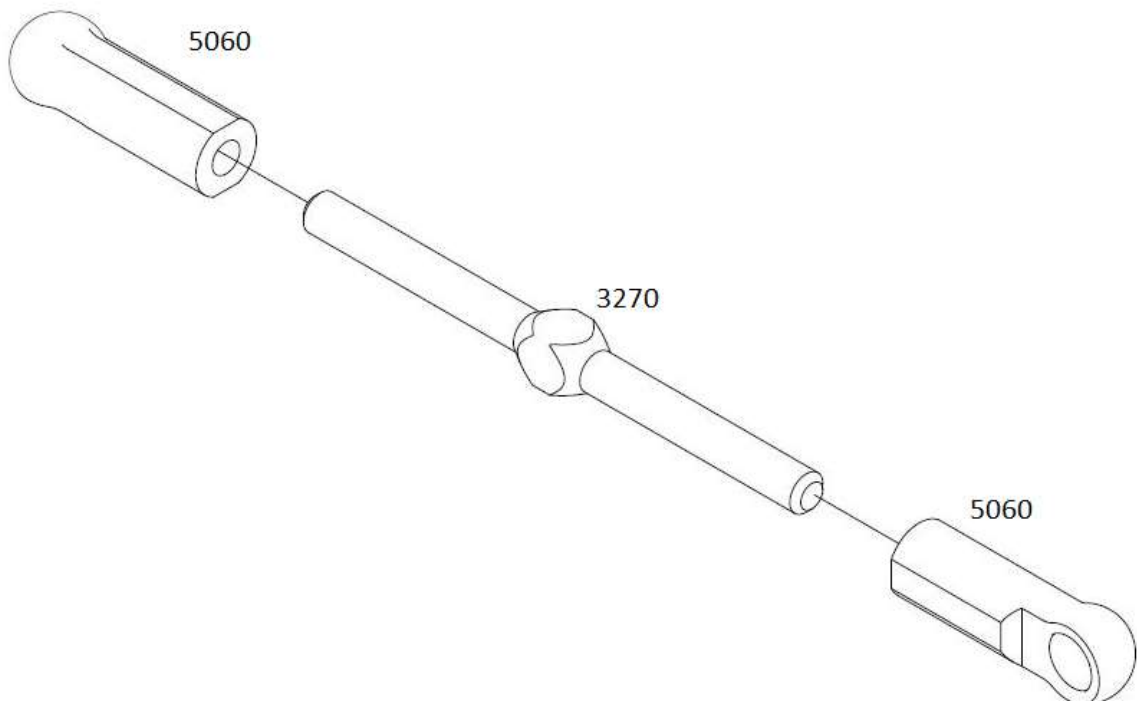
BAG G STEP 4



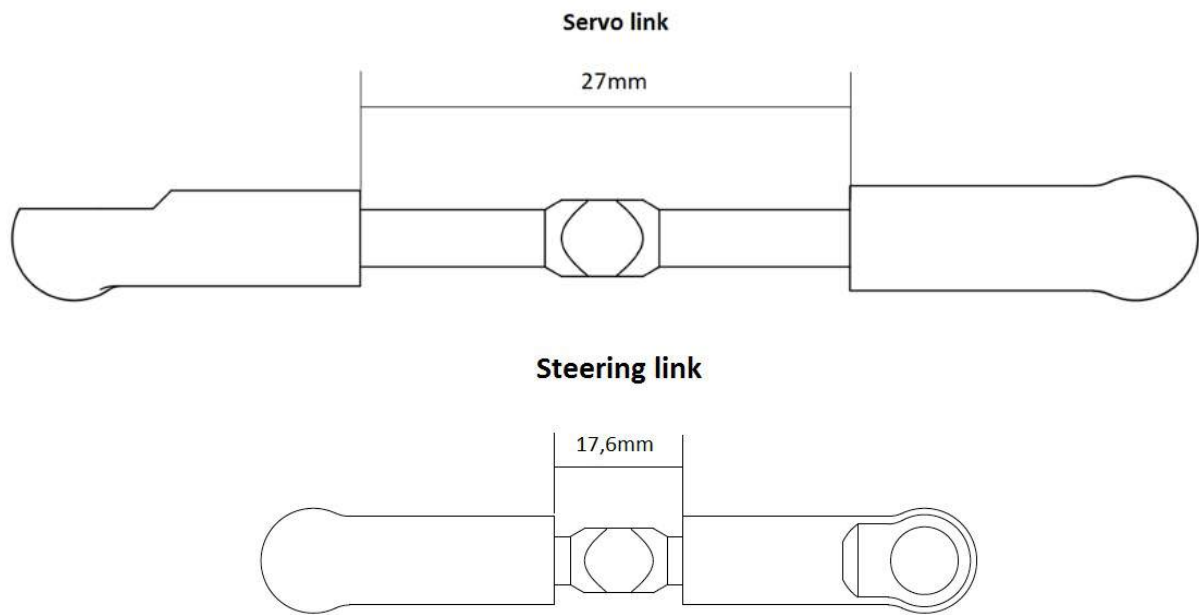
BAG G STEP 5 STEERING LINK SHORT x 2



BAG G STEP 6 STEERING LINK LONG

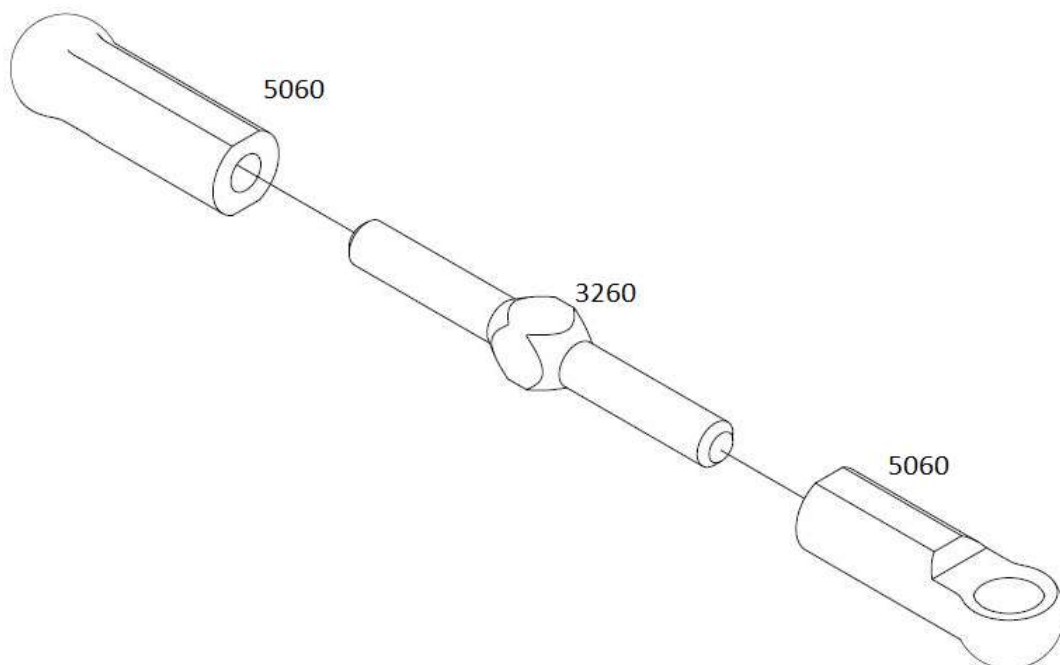


BAG G STEERING LINK LENGTHS

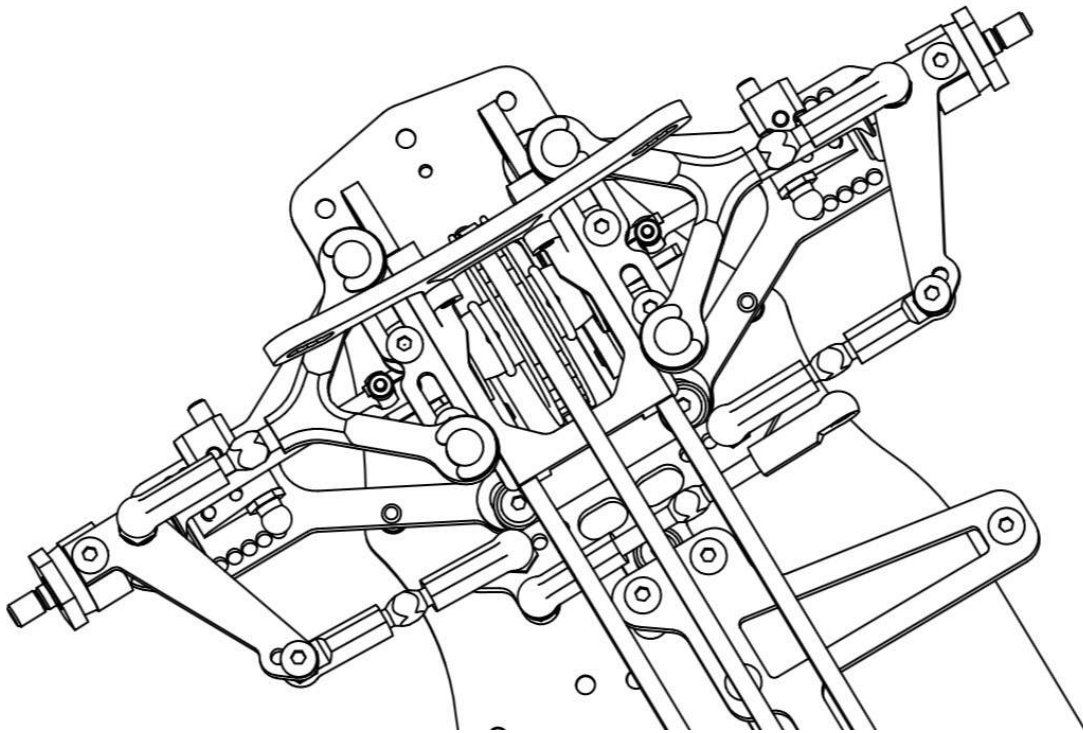


NOTE: the given lengths should give approximately 1° of front toe out.

BAG G STEP 7



BAG G FINISHED





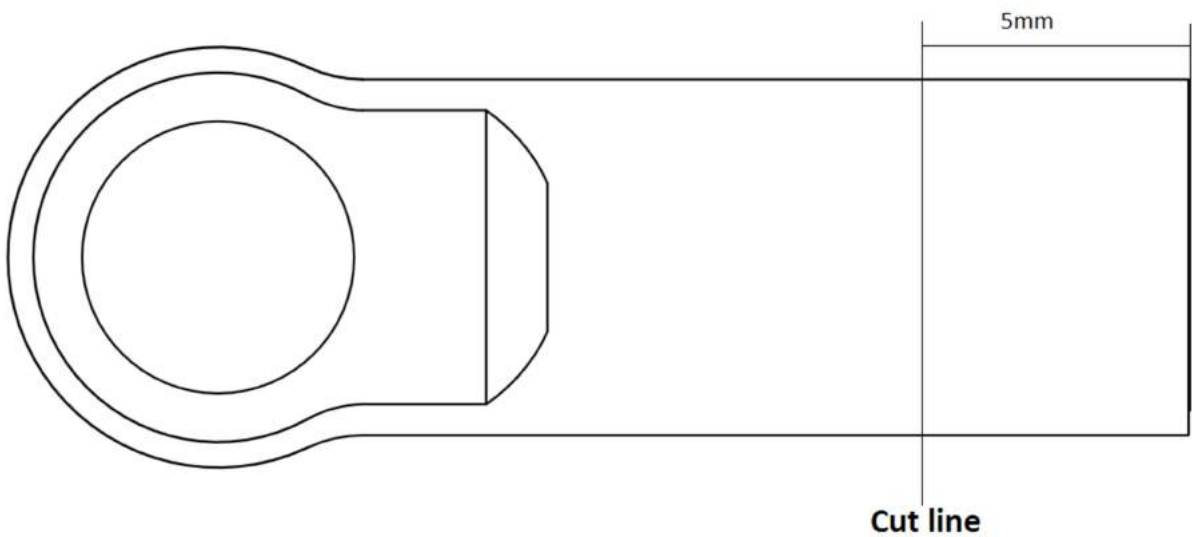
BAG H INCLUDES

4 x 5060	Ball joints
1 x 4000	Anti roll bar 1,4mm
2 X 4010	Anti roll bar 1,3mm
1 X 4015	Anti roll bar 1,2mm
4 X 3000	Roll bar side steer
4 x 303455	Anti roll bar ball joint
4 X 362650	Anti roll bar screw
4 X 6030F	Bearing 4x7x2,5mm flange
1 x 3270	Turnbukles 3x39mm
4 x 5060	Ball joints
1 X 1150	Servo plate

SCREWS & SHIMS NEEDED

4 x P3x3	Set screw
4 x P3x5	Set screw

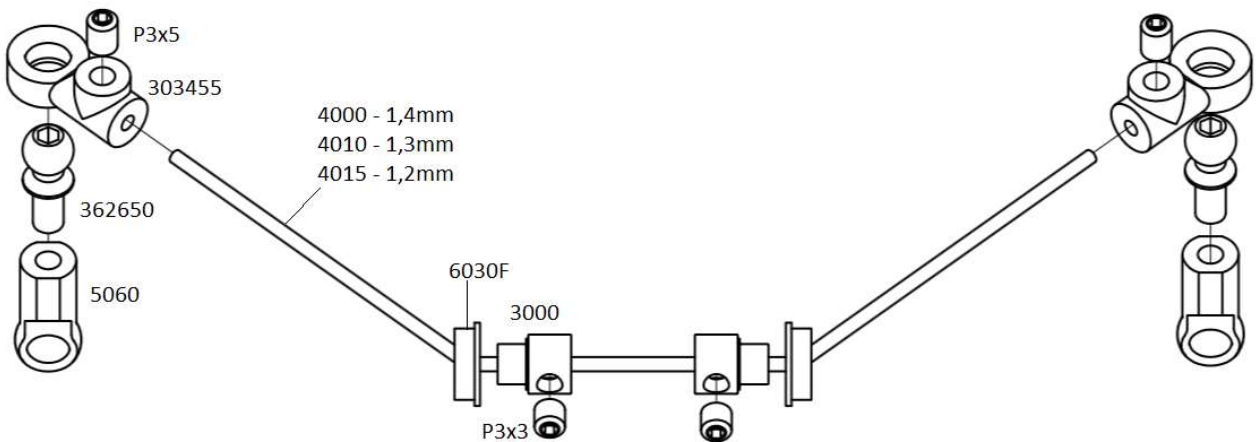
BAG H STEP 1



NOTE: The 5060 needs to be shorted by approx 5mm. Use a knife to cut the 5060 as showed above

BAG H STEP 2

Note: Building steps of front and rear anti-roll bars are the same

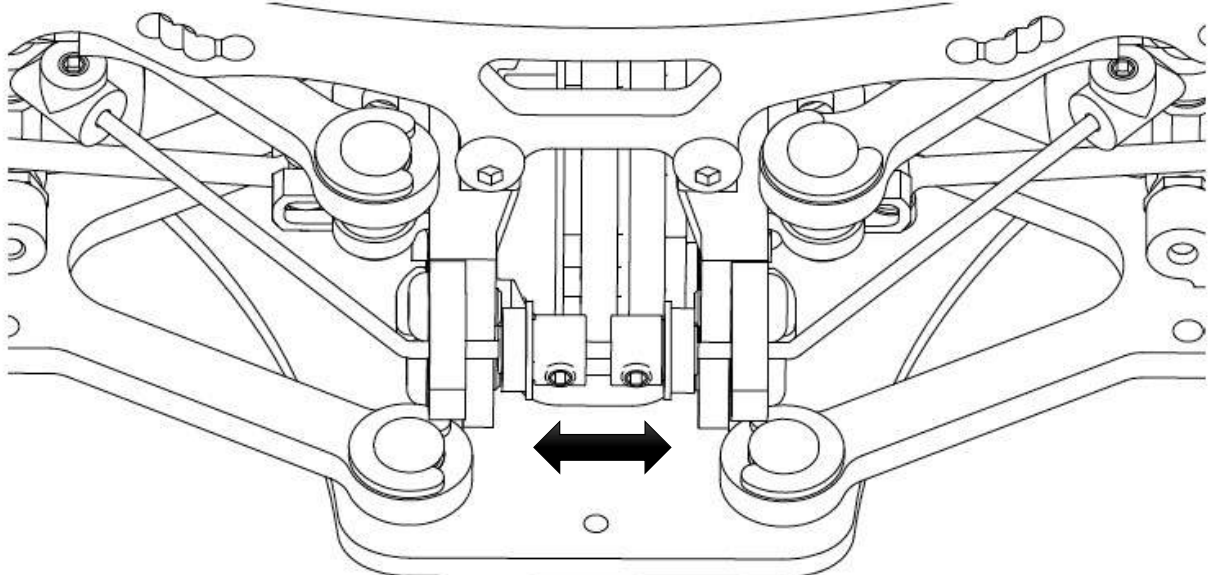


Recommended roll bars to use:

Front: 1,4mm

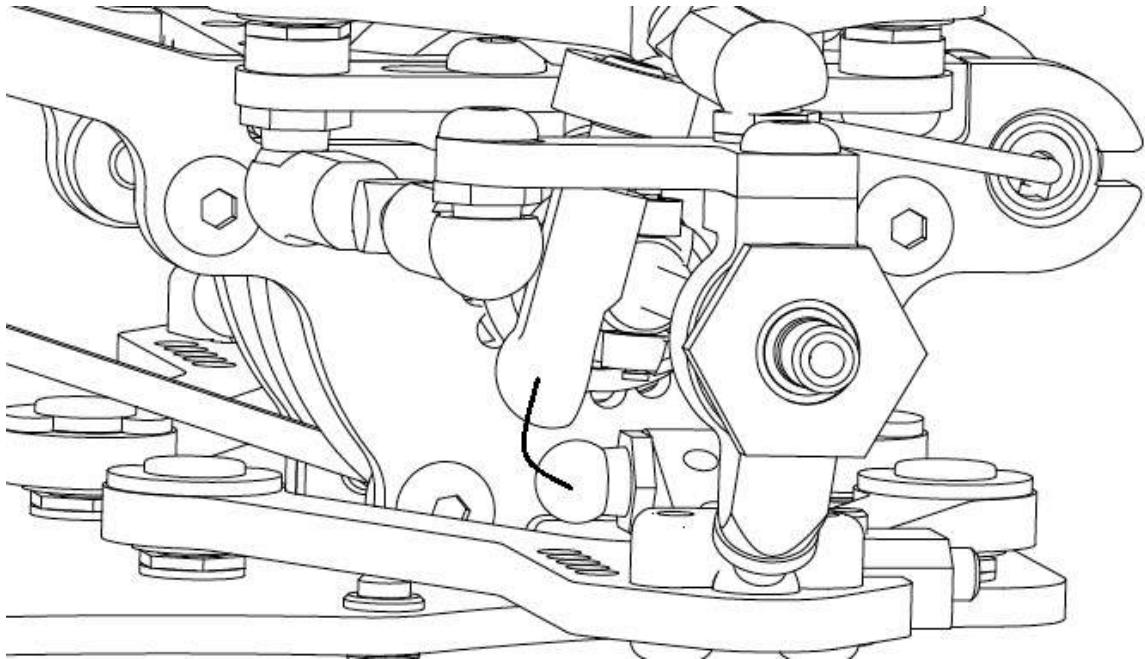
Rear 1,2mm

BAG H STEP 3



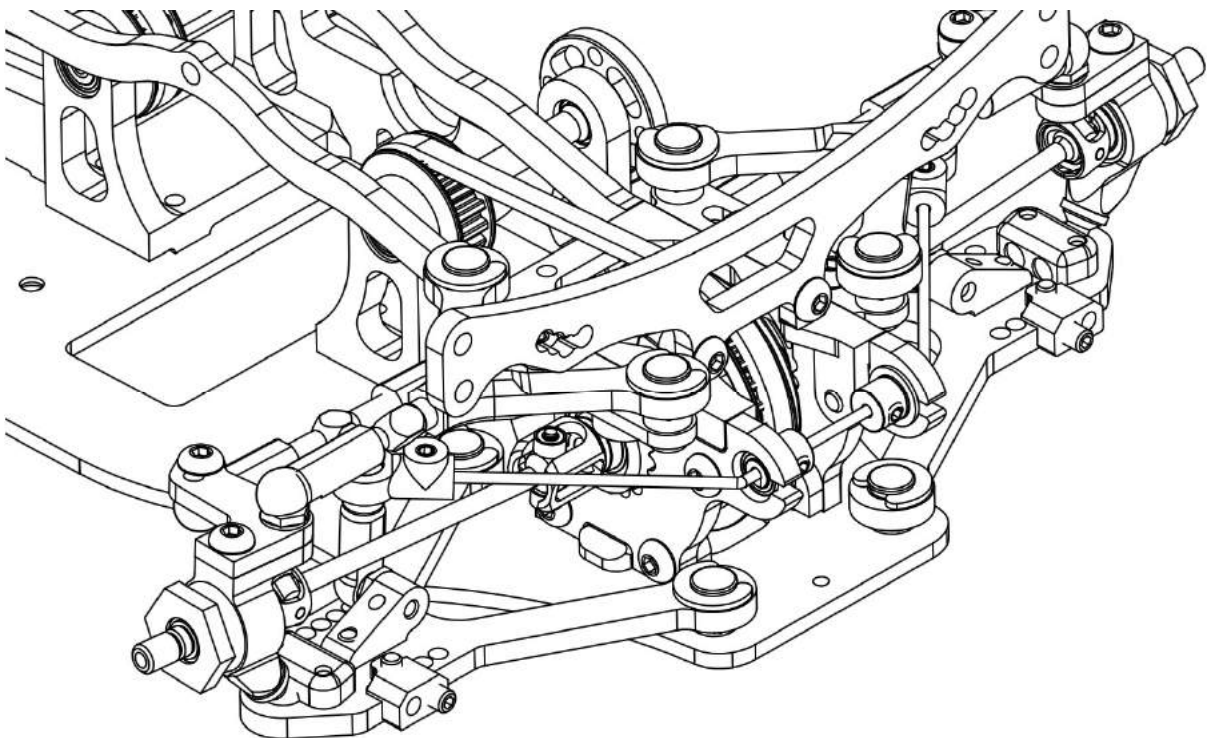
Insert the anti-roll bar into the sideplates and press the 6030F into the sideplate

BAG H STEP 4



Snap on the 5060 to the pivot ball

BAG H FINISHED





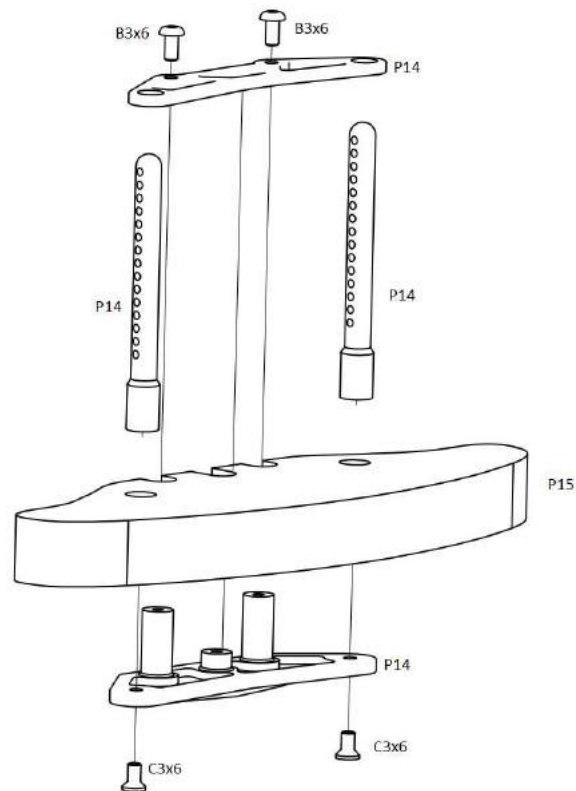
BAG I INCLUDES

1 x 306110	Antenne
2 x 301332	Rear body mount
1 X P14	Bumper set
1 X P15	Bumper foam
2 X SG110	Spur gear 110
1 x 1220	Motor bucket
2 X 1080	Battery mount
4 X WH01	Wheel nuts
1 x 3240	Side plate stiffer long
1 x 3250	Side plate stiffer short
2 X 4050	Pin 2x10

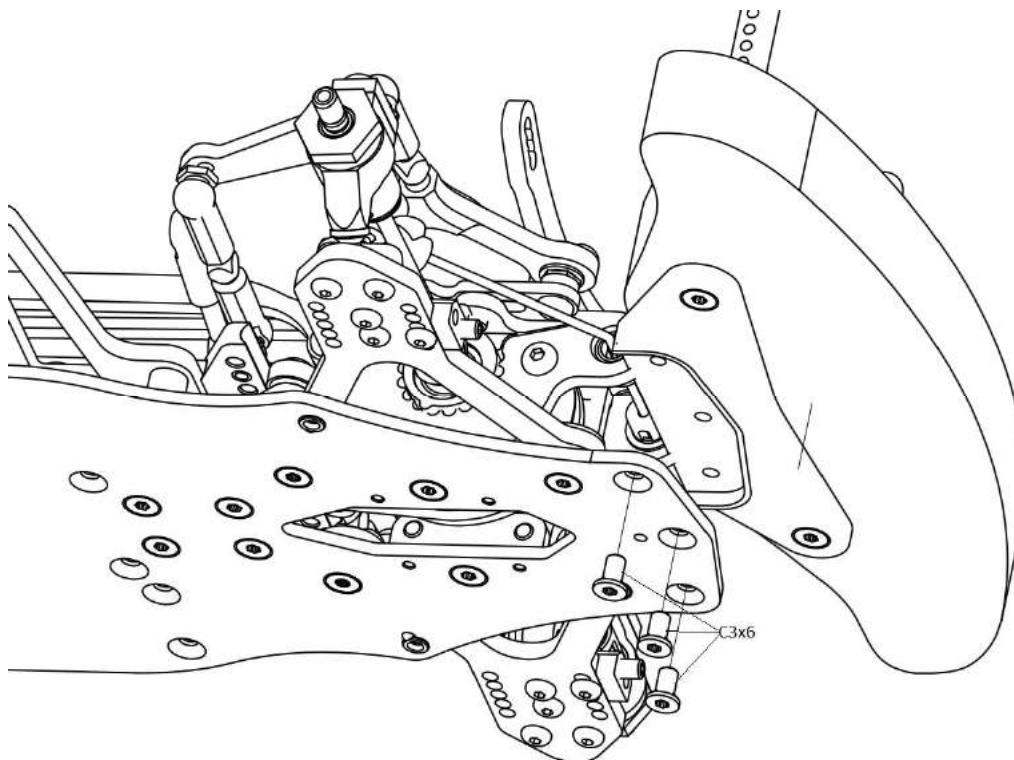
SCREWS & SHIMS NEEDED

4 x B3x5	Hex screw SFH
5 x B3x6	Hex screw SFH
1 x B3x25	Hex screw SFH
5 x C3x6	Hex screw SFH
4 x C3x8	Hex screw SFH
4 x P3x3	Set screw
4 x P3x5	Set screw
4 x SH2,0	Shim 2,0mm
4 x NUT01	M3 Nut

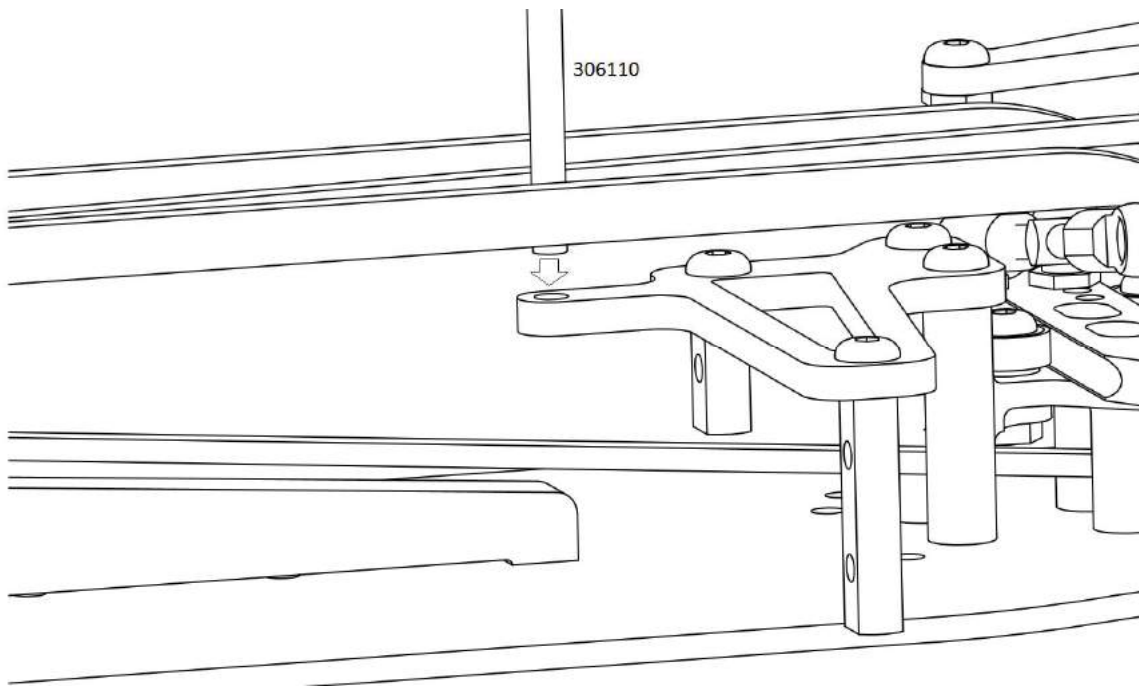
BAG I STEP 1



BAG I STEP 2

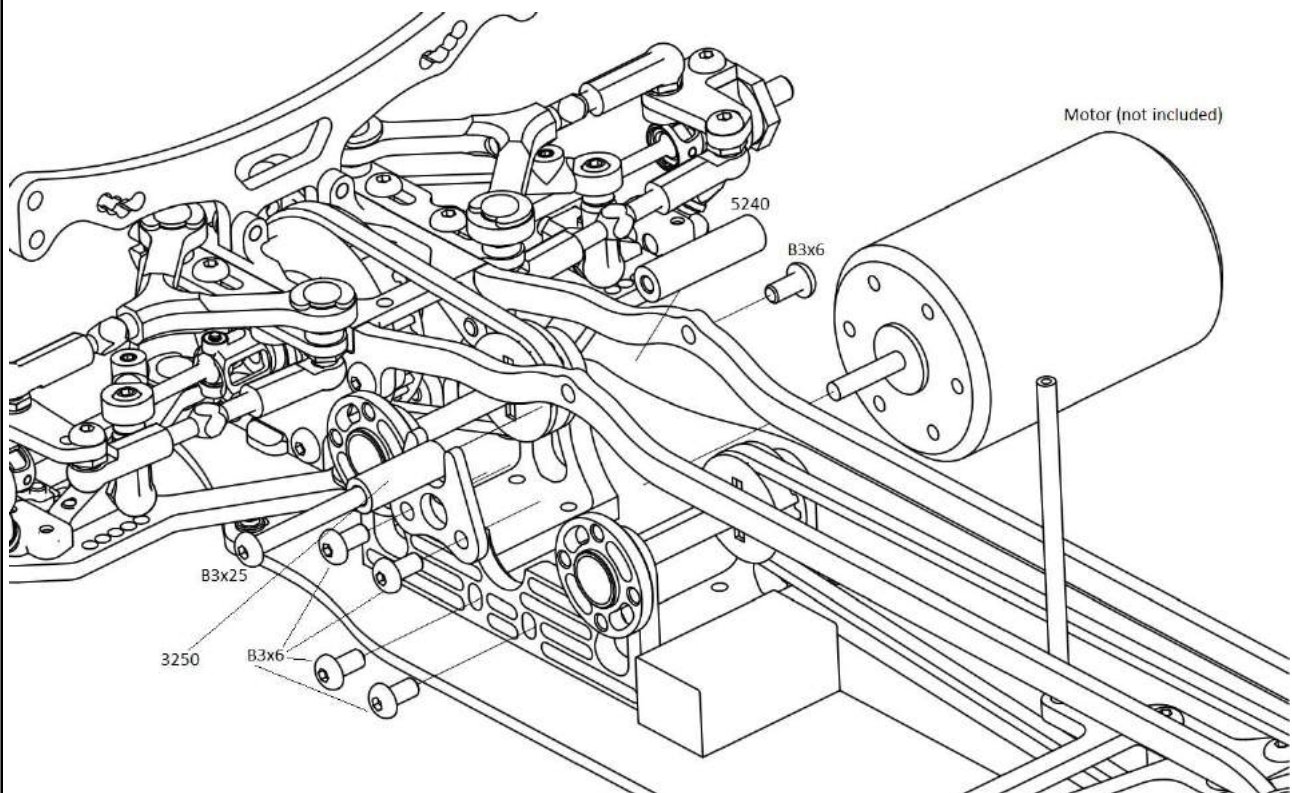


BAG I STEP 3

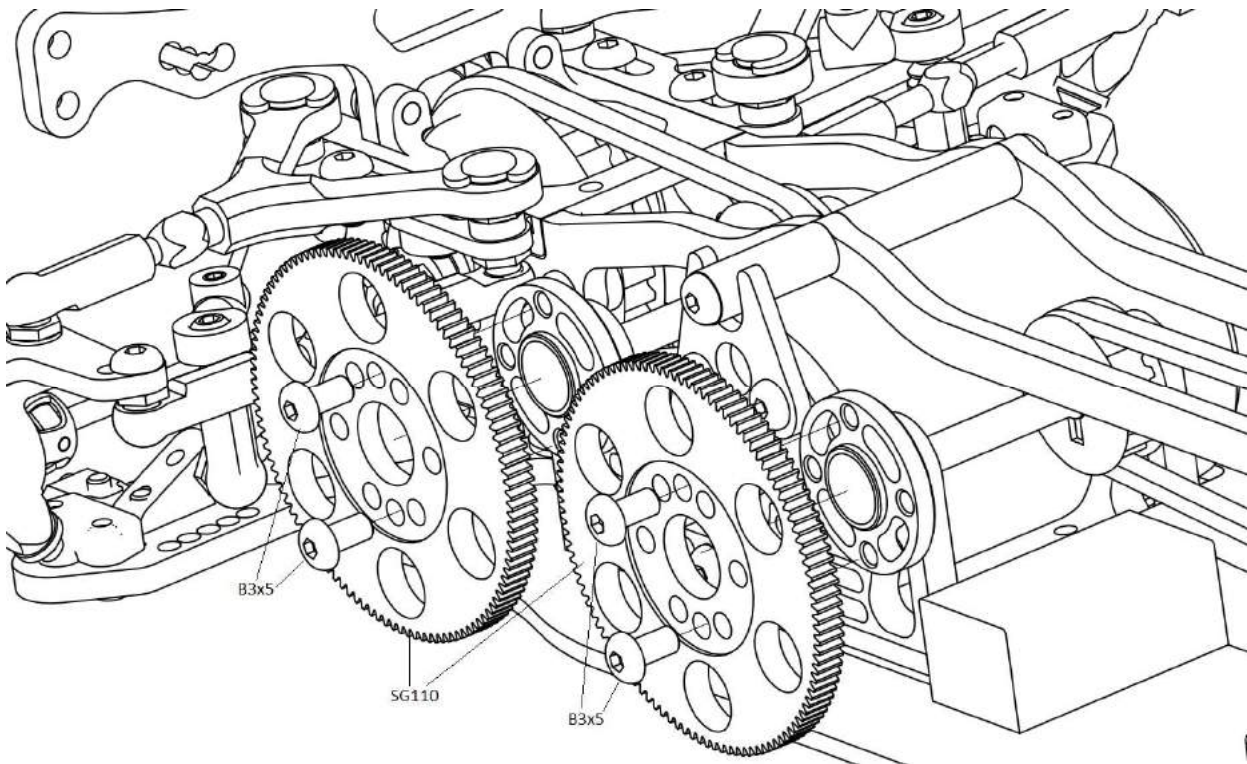


Insert the 306110 to the servoplate

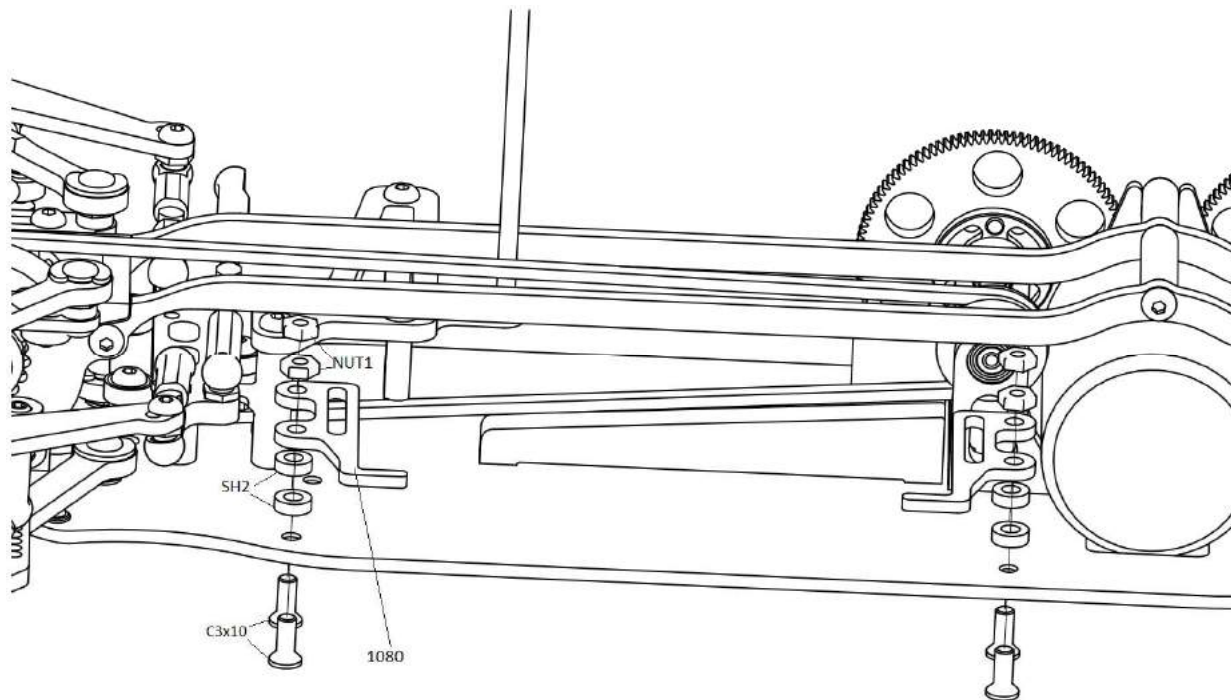
BAG I STEP 4



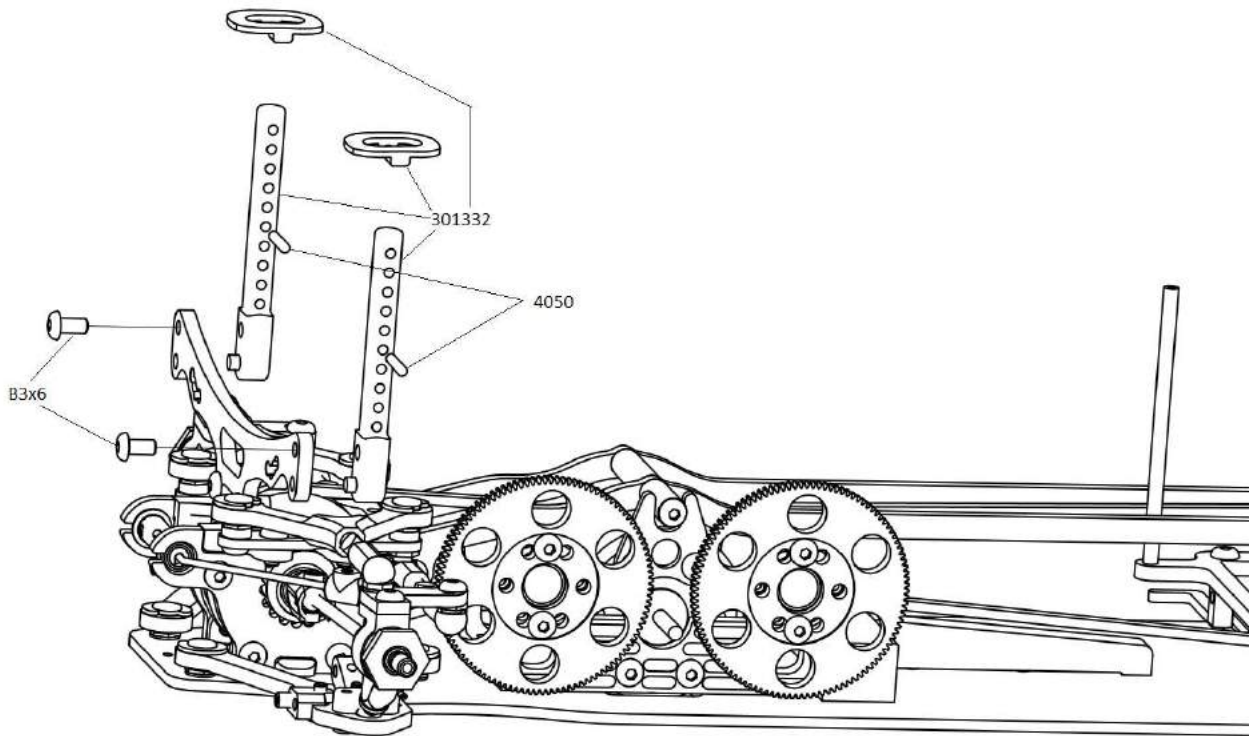
BAG I STEP 5



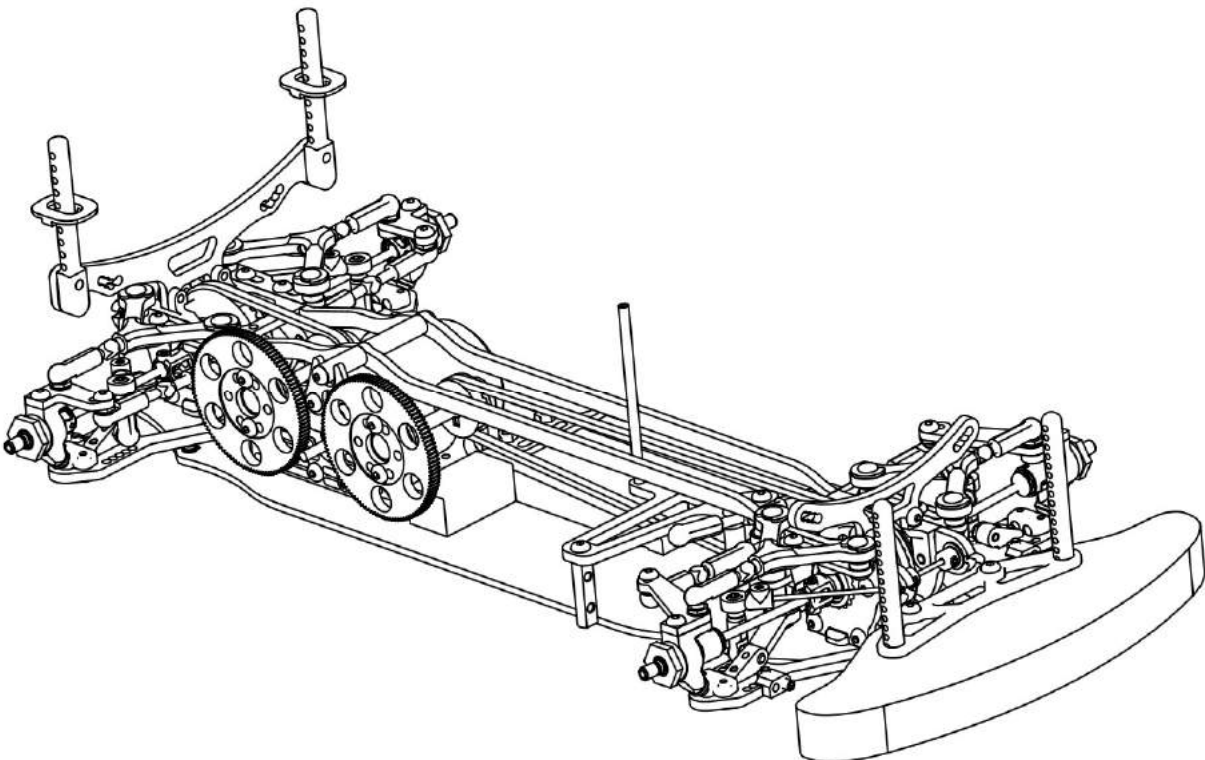
BAG I STEP 6



BAG I STEP 7



BAG I FINISHED





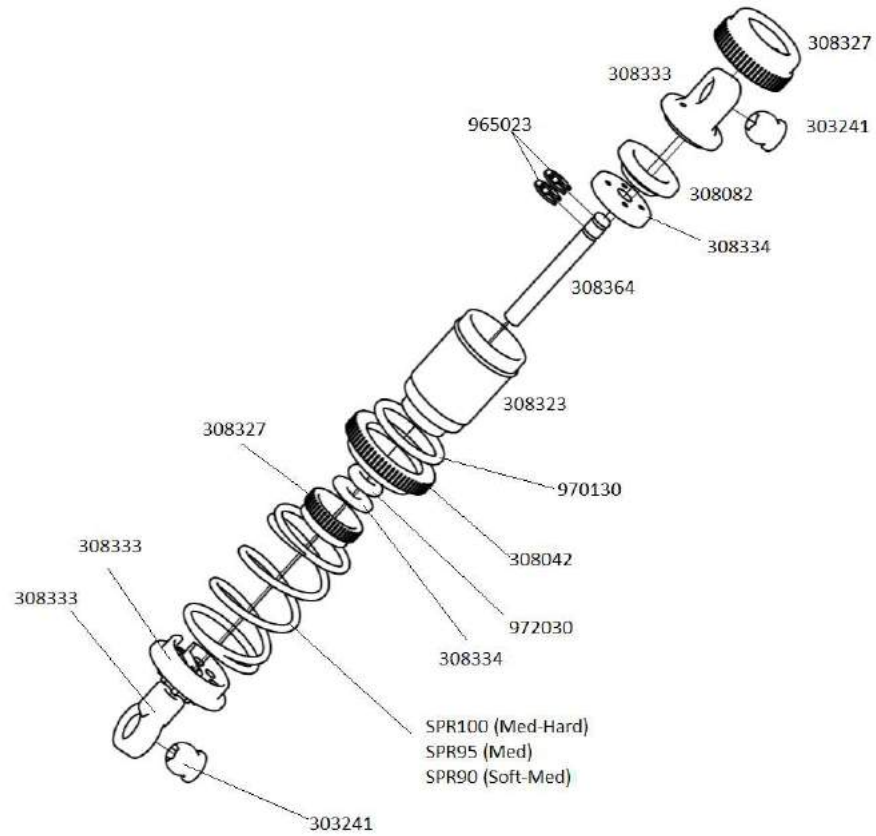
BAG J INCLUDES

2 x SPR90	Spring soft-med
2 x SPR95	Spring med
2 x SPR100	Spring med-hard
2 x 308333	Shock parts
2 x 308334	Shock piston complete
4 x 308323	Alu shock body
4 x 308353	Alu shock cap top
4 x 308042	Alu shock adjustable nut
8 x 303241	Ball universal (5,8mm)
4 x 308082	Shock membrane
4 x 965023	E-clip (2,3mm)
4 x 308364	Shock shaft
4 x 972030	O-ring 3x2mm
4 x 970130	O-ring 13x1,5mm

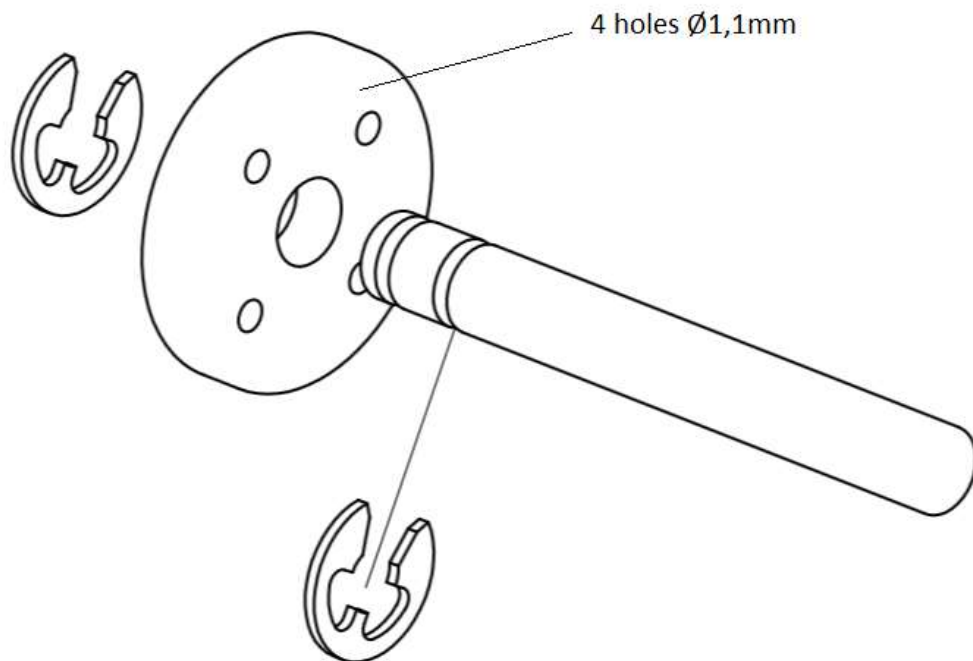
SCREWS & SHIMS NEEDED

4 x B3x6	Hex screw SFH
-----------------	----------------------

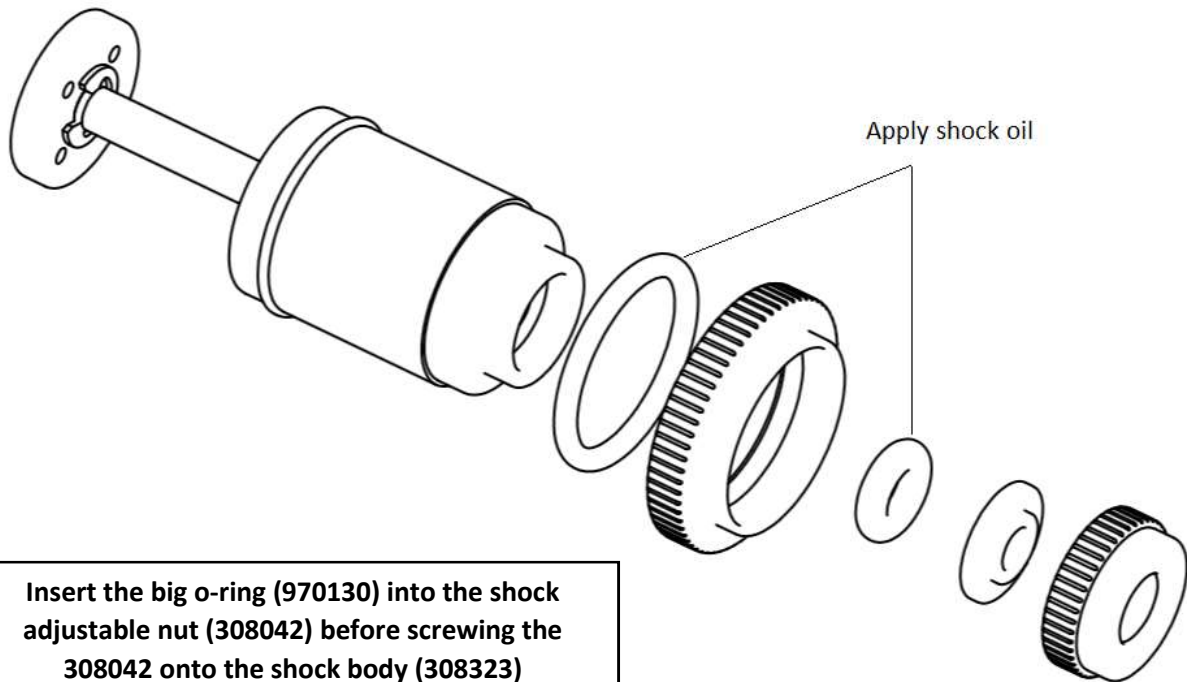
BAG J



BAG J STEP 1

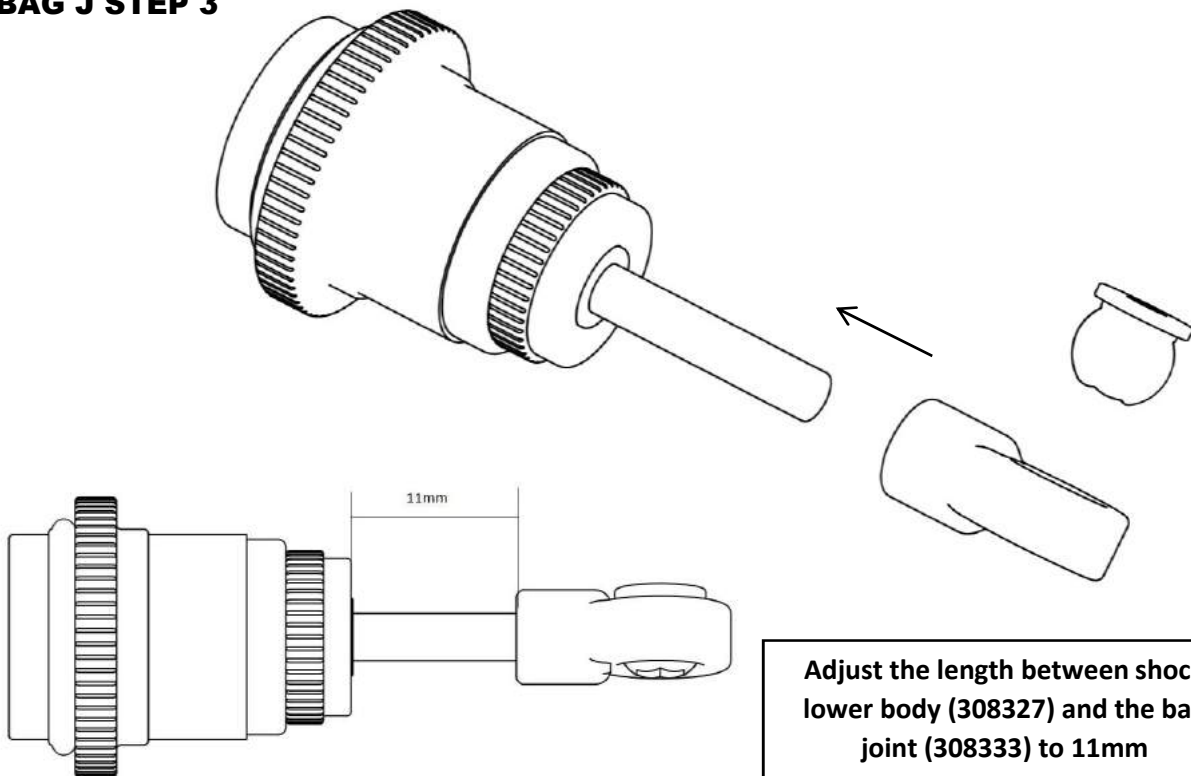


BAG J STEP 2



Insert the big o-ring (970130) into the shock adjustable nut (308042) before screwing the 308042 onto the shock body (308323)

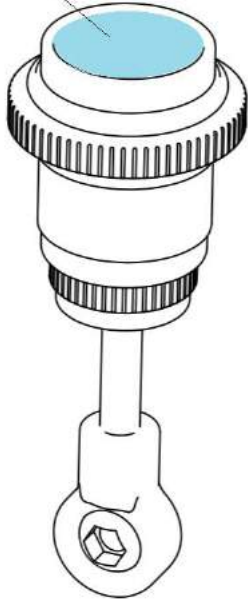
BAG J STEP 3



Adjust the length between shock lower body (308327) and the ball joint (308333) to 11mm

BAG J STEP 4

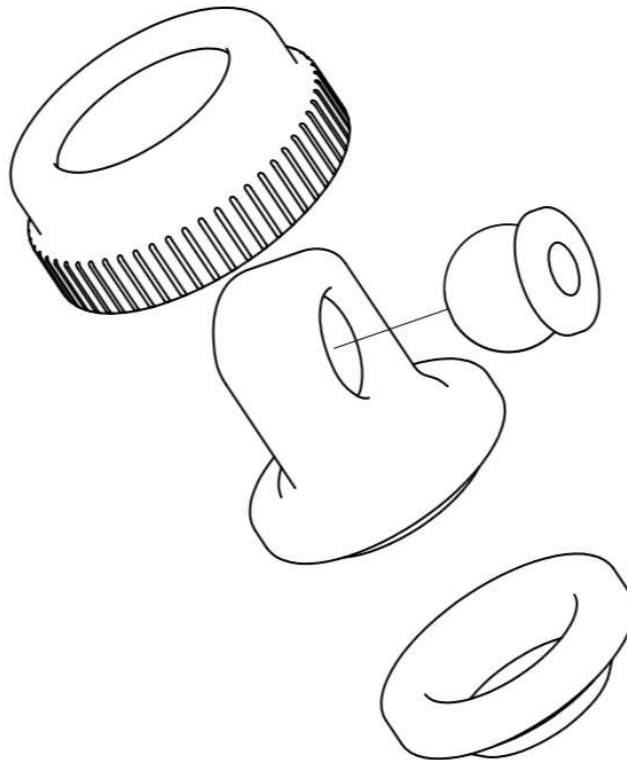
Shock Oil



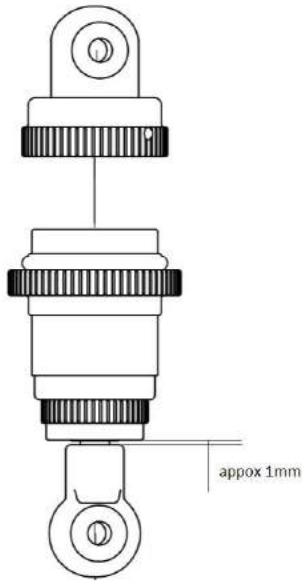
SCHOK FILLING:

1. Fully extend the piston rod so the piston is at the bottom of the shock body
2. Hold the shock upright and slightly overfill the shock body with shock oil
3. Let the oil settle and allow air bubbles to rise to the top. Slowly move the piston up and down to allow oil into all cavities within the shock body
4. Extend the piston rod all the way out of the shock body. Let the shock rest for 5 minutes to allow the air bubbles to escape
5. Add shock oil as necessary

BAG J STEP 5



BAG J STEP 6



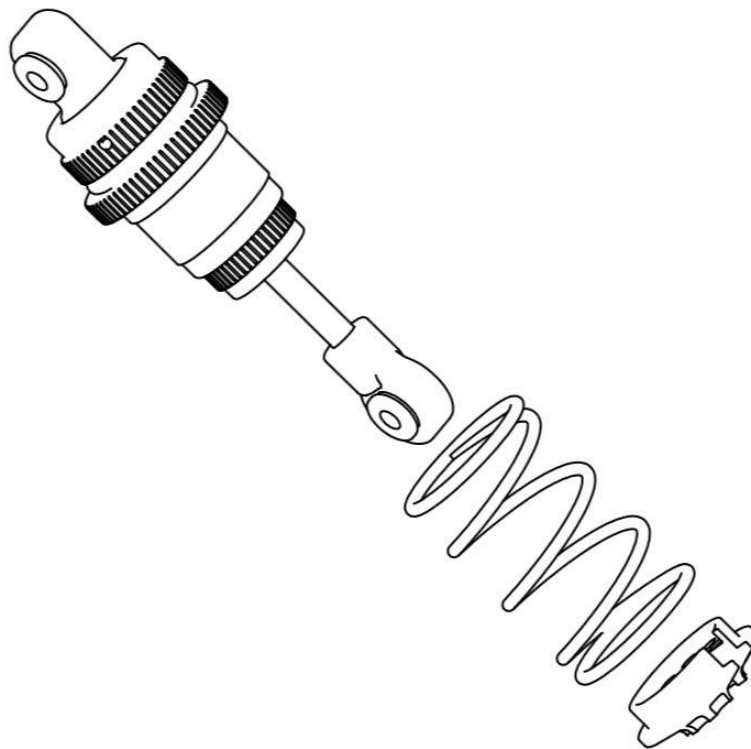
SCHOK MOUNTING:

1. When installing the shock cap assembly on the shock body, some oil will leak out, this is normal
2. When installing the shock cap assembly on the shock body, press the piston rod up so there will be appox 1mm car between the lower shock body and the ball joint
3. Tighten fully

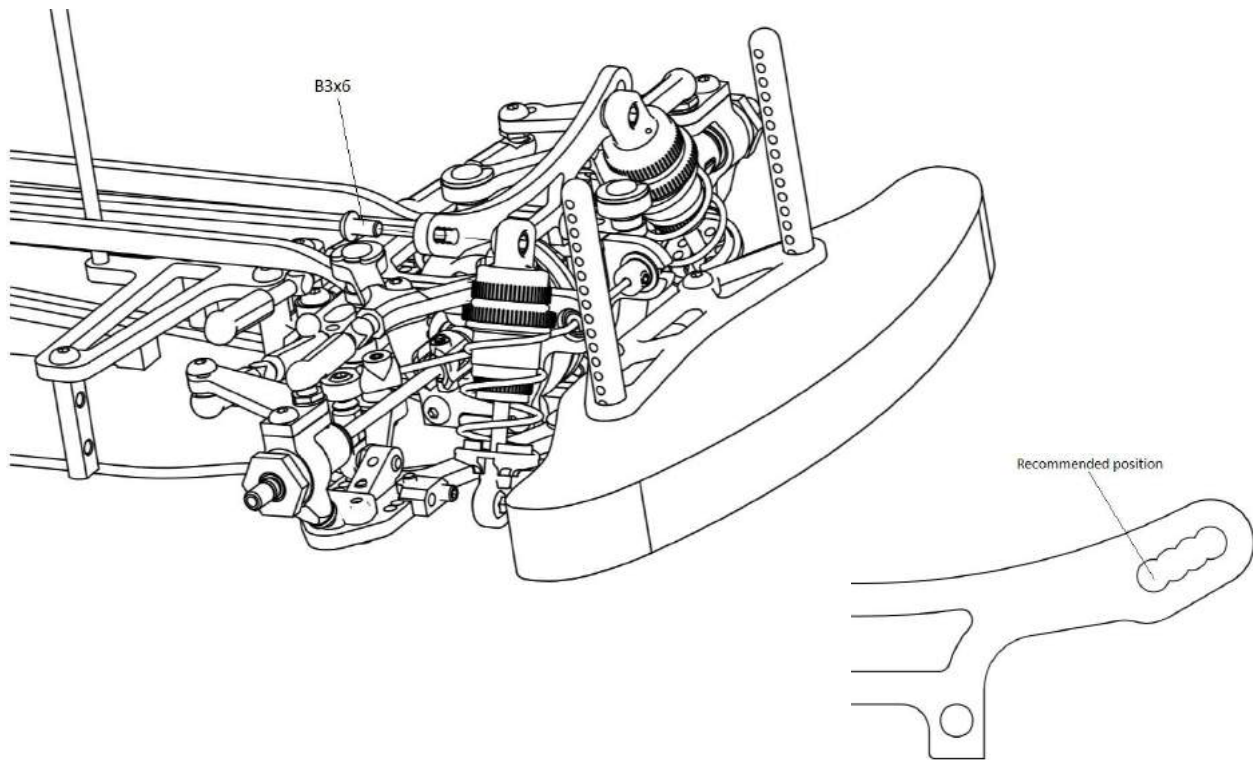
NOTE:

The mounting method above should provide around 10-15% rebound, which it suggested.

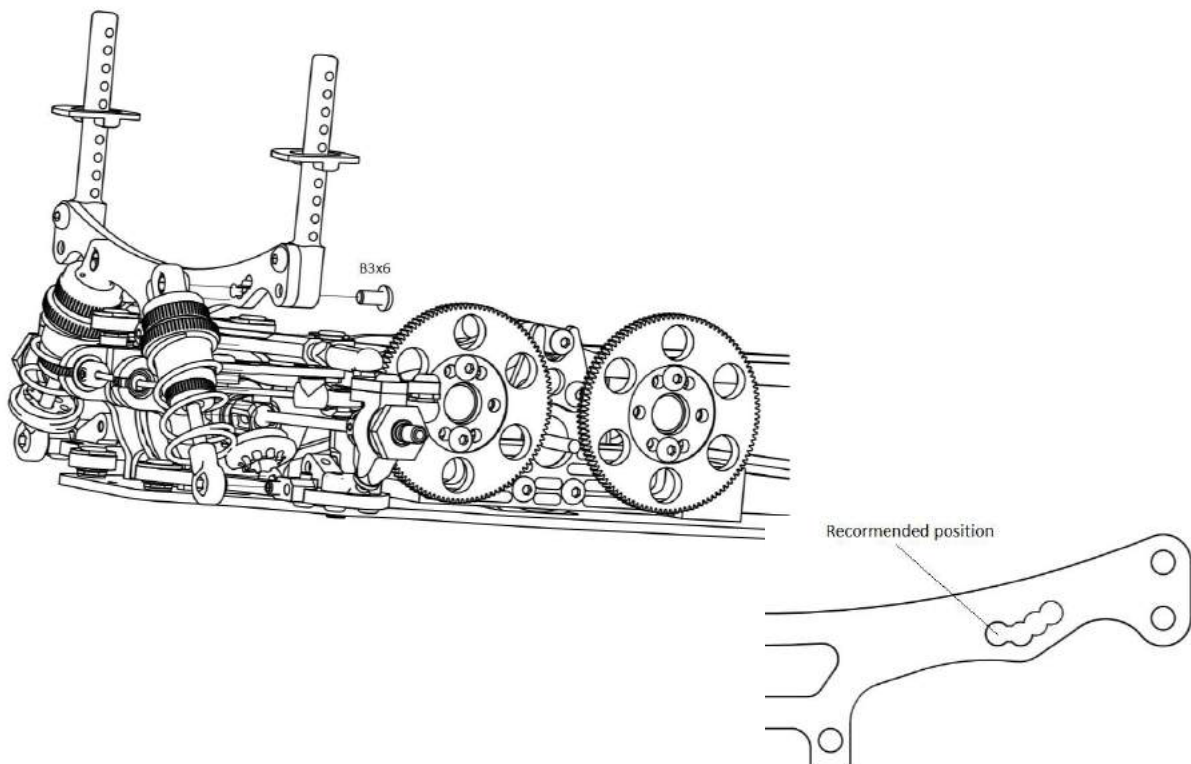
BAG J STEP 6



BAG J STEP 7 FRONT



BAG J STEP 8 REAR



BAG J FINISHED

